

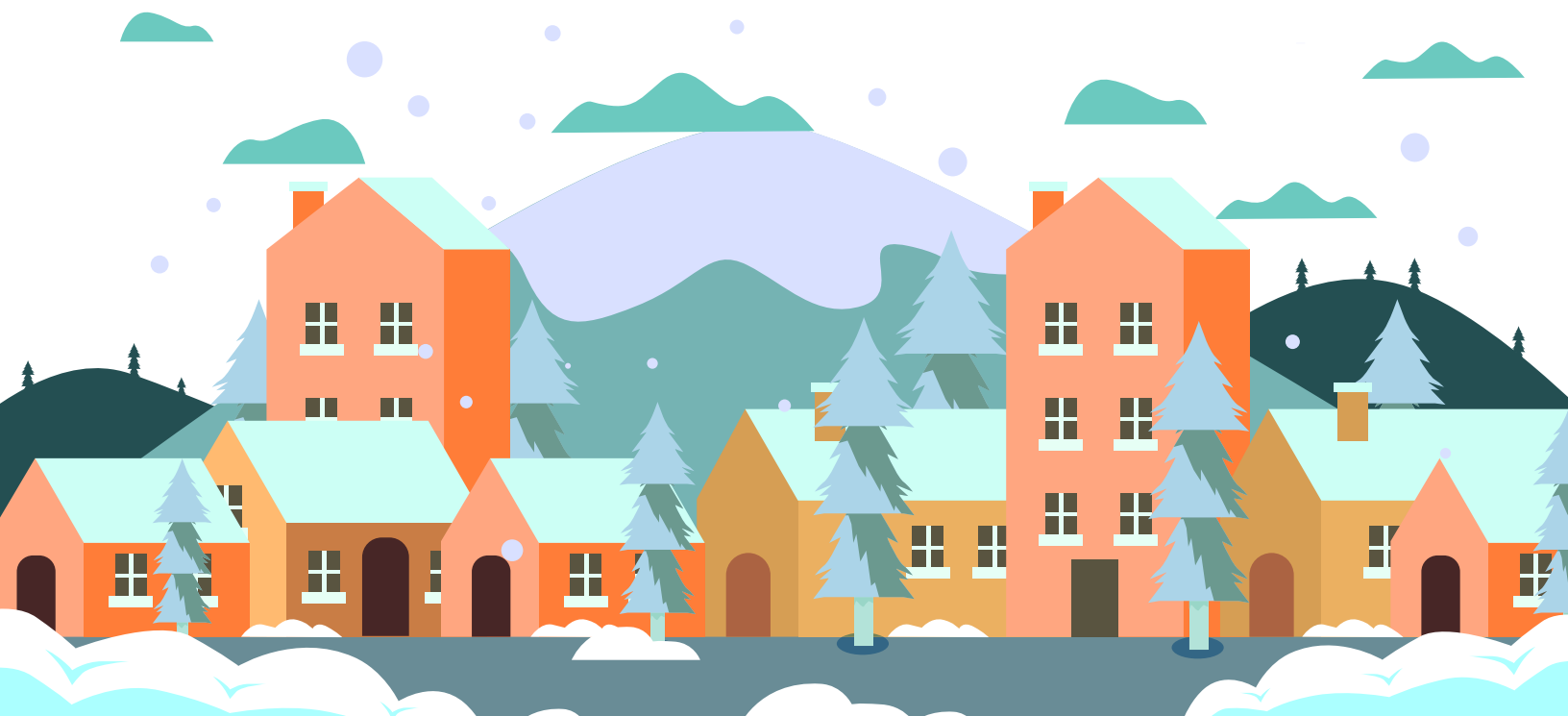


pennsylvania

DEPARTMENT OF HUMAN SERVICES

**EMERGENCY RENTAL
ASSISTANCE PROGRAM
(ERAP)**

**Monthly Report
December 2021**



December 2021 Summary Report

Month Overview

December 17 was the deadline for counties who projected having excess funds as part of their September certification to DHS to return funds for the purpose of reallocating to counties who certified a need for additional funds. Distribution of reallocated funds is expected in February 2022. In addition, DHS continues to distribute ERAP2 payments to all 67 Pennsylvania counties and ERAP2 high-needs payments to counties that spend more than 50% of their ERAP1 funds. Funds continue to be distributed to counties on an ongoing basis as payments are processed through DHS.

DHS saw additional state spending and obligation totaling \$32,206,681.40 for ERAP1. In addition to this increase, DHS also saw increased participation to 20 counties utilizing ERAP2 funding as money from ERAP1 is used and additional applications are able to be evaluated under the additional criteria of occurring during COVID-19 as opposed to only due to COVID-19.

DHS saw an increase to \$15,085,382.70 in state funds paid or obligated from ERAP2 compared to the reported \$10,623,681.56 in paid or obligated funds in the month of November.

In December 2021:



24,510
applications
received
during the month



13,472
new households
received assistance
during the month




2,232
households
denied during
the month




104,062
applications
pending¹, as of the
end of the month

December 2021 (paid or obligated)	ERAP1	ERAP2	Total
Emergency Rental Assistance	\$30,137,758.88	\$14,488,213.91	\$44,625,972.79
Housing Stability Services	\$154,099.74	\$1,087.67	\$155,187.41
Administrative Costs	\$1,914,822.78	\$596,081.12	\$2,510,903.90
	\$32,206,681.40	\$15,085,382.70	\$47,292,064.10

Total to Date



\$384+ million
Total monies
paid or obligated
in ERAP1 and ERAP2



78,076
Households assisted

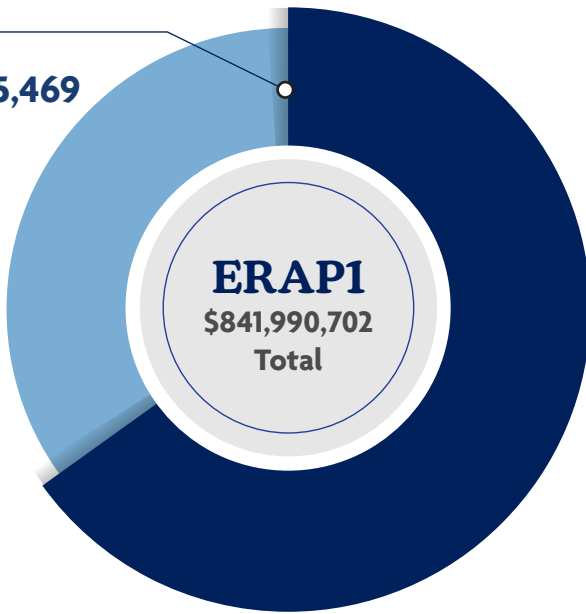
DHS-allocated monies paid or obligated since the program start are reported at \$384,327,967.39 with 78,076 households receiving rental assistance and/or housing stability services who have been impacted due to or during the COVID-19 pandemic (ERAP1 and ERAP2 combined.) The ERAP1 paid and obligated funds total at the close of the 4th quarter has put DHS above 61% of funds spent. Counties continue to progress toward the 65% threshold outlined within the Program Improvement Plan submitted for ERAP1.

NOTES: 1) September, October, November and December saw the highest number of applications received — 29,153, 26,461, 22,845 and 24,510 respectively. Counties have processed between 10,000 to 12,000 applications a month consistently since June 2021. Applications are now being received at double previous rate. Larger counties, which receive the highest number of applications, are working to fiscally balance federal and state funding as funds are being depleted.

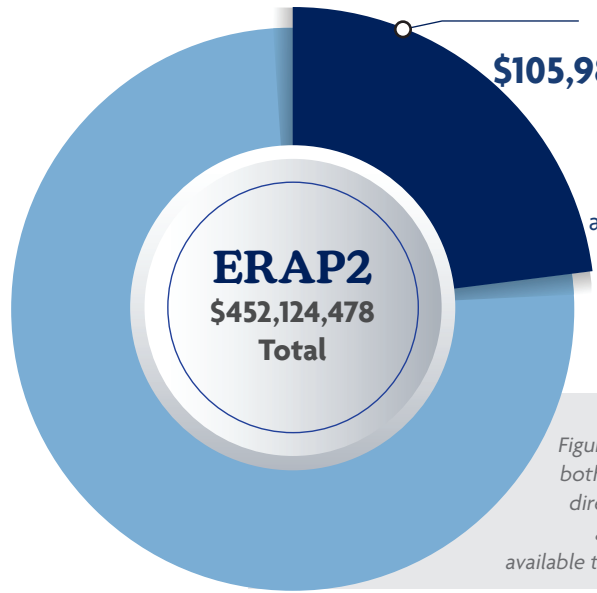




65%
\$543,245,469
was spent
to date of
the total
ERAP1
allocation*



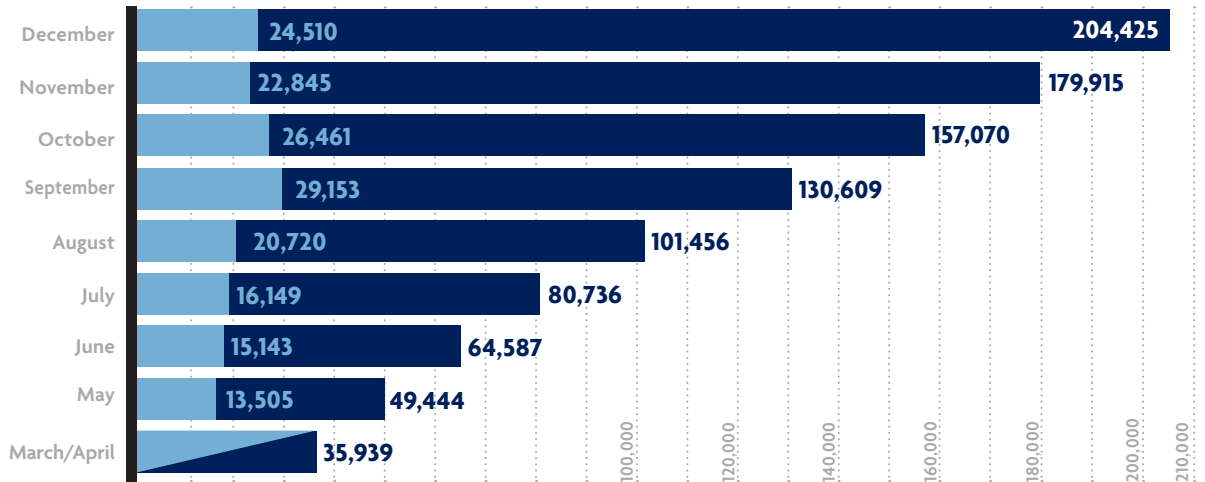
23%
\$105,986,663
was spent
to date of
the total
ERAP2
allocation*



Note:
Figures include
both state and
direct federal
allocations
available to counties

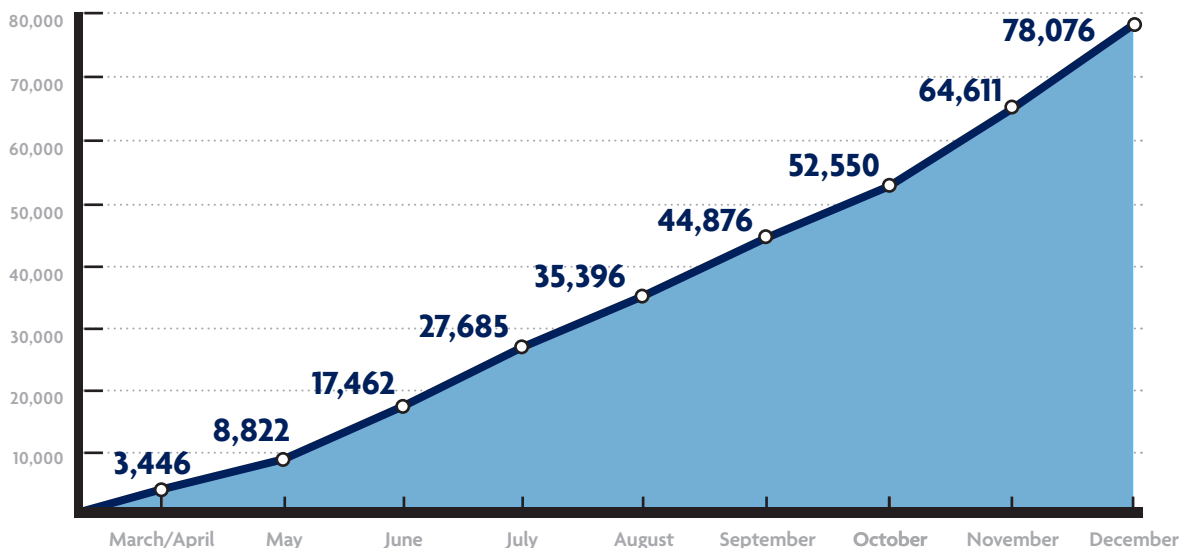
Total applications received to date

■ Total to Date
■ Applications Received That Month



*Note: Updates have been made to previous month totals based on new information provided by the counties.

Number of households receiving services to date





Counties

The five counties with the **highest percent** of state allocated DHS funds expended since the inception of the ERAP1 & ERAP2 programs are:



The five counties with the **lowest percent** of state allocated DHS funds expended since the inception of the ERAP1 & ERAP2 programs are:

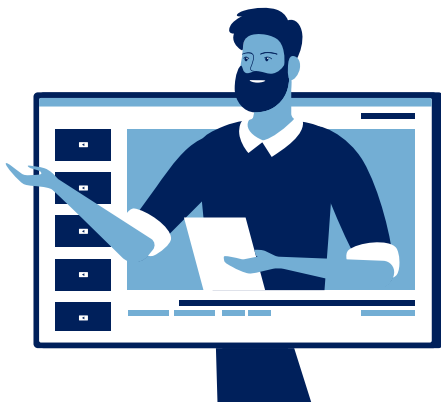


Technical Assistance Overview

Providing technical assistance directly to counties implementing the ERAP program has been a high priority for DHS. In December, assistance was given during regularly scheduled calls with counties. Additional assistance is given in one-on-one communications with individual counties almost daily to address unique needs on an as-needed basis.

This month's agenda items included:

- ERAP 2 Addendum
- LIHEAP & ERAP Coordination of Effort
- Procedural Memorandums:
 - #002-21 Emergency Rental Assistance Program (ERAP) Procedure for Appeals
 - #005-21 Use of Emergency Rental Assistance Program 2 (ERAP2) Funds
- Returned Funds
- Outreach to Community Agencies
- PHP Reports and Files
- Recoupment and Reallocation of ERAP Monies
- Compass Enhancements
- Categorical Eligibility Bulk Verification
- December Survey for Agenda Topics
- ERAP Inquires from DHS
- Status of ERAP Funding
- Open Discussion
 - Outreach to Landlord and Direct to Tenant Pays
 - AMI Limits





ERAP System Updates

In December, a valuable system enhancement was made for the counties to obtain needed case verification faster from CAO partners in larger quantities than what they were previously able to request.

Also, capability for a bulk transfer of pertinent CAO case information alleviates the applicant burden of gathering verifications that are difficult to provide and can hold up application approval.



Stakeholder Outreach

In December, DHS met with the Income Maintenance Advisory Committee (IMAC). IMAC advises the Department of Human Services on policies, procedures and other activities related to the programs administered by the Office of Income Maintenance.

IMAC is composed of:

- Current and former public assistance recipients
- Representatives of public benefits advocacy and rights organizations
- Employment and training specialists
- Other client advocates

The DHS discussion with IMAC surrounding ERAP included a general update of households served, funds paid in rent, utility, and housing expenses, and the increase in applications for ERAP. DHS also answered questions regarding:

- When the program will end
- Assistance available for homeless individuals
- The ERAP appeal process

External Communications

In December, ERAP was promoted through statewide press releases and press events. Acting Secretary Meg Snead and Senator Bob Casey joined together to educate Pennsylvanians about ERAP at a virtual event. This event focused on educating potential applicants of the general details of the program as well as the capability it has to alleviate hardship for qualifying individuals. Two press releases came out in the month of December to promote ERAP. A press release reminding Pennsylvanians of Mental Health and Substance Use Disorder Resources During the Holiday Season featured ERAP as a public assistance program that could help. Additionally, ERAP was promoted in a press release introducing the new and upcoming DHS Low Income Home Water Assistance Program (LIHWAP).



Pageviews: 88,568
Time on Page: 2:49



Posts: 4
Impressions: 38,459
Engagements: 1575



Tweets: 5
Impressions: 8,892
Engagements: 540



[Find more state & county level data.](#)



Background

The Department of Human Services (DHS) is pleased to submit this report, as required by Act 2021-1, Article I-D of the Fiscal Code, 72 P.S. §103-D (a)(7.1) and (8):

Powers and duties.--The department shall have the power and duty to: prepare a monthly consolidated report with information from all counties submitted under section 104-D(4) and shall submit the report on a monthly basis to the chairperson and minority chairperson of the Appropriations Committee of the Senate and the chairperson and minority chairperson of the Appropriations Committee of the House of Representatives. The report shall also be posted and maintained on the department's publicly accessible Internet website.

The report shall include the following information:

- (i) The total amount of funds received by a county.
- (ii) The total amount of funds spent by a county for services under section 102-D(a).
- (iii) The total amount of excess funding or shortfall identified by a county as of September 20, 2022.
- (iv) The total number of households that applied for assistance.
- (v) The total number of households that received assistance.
- (vi) The total amount of funding sought by services under section 102-D(a).
- (vii) The total amount of assistance provided by services under section 102-D(a).
- (viii) An itemization of all expenditures for administrative costs.

Act 1 of 2021 authorized DHS to implement the Emergency Rental Assistance Program (ERAP1). The federal Consolidated Appropriations Act of 2021, (Pub. L. 116-260) allocated \$569,807,659.70 directly to Pennsylvania to assist those affected by COVID-19 by providing funding for certain past, current and future rental and utility expenses. Of that allocation, the Pennsylvania General Assembly appropriated \$5,698,076.60 to be used by DHS for administrative costs. Funding was allocated to all counties based on percentage of population minus any direct federal allocation per Section 102-D(c) of the Act. (See Table 2 for allocations and expended/remaining funds as of September 30, 2021). A maximum of 9.09 percent of each county's allocated ERAP1 funds may be used for the combined costs of administration and housing stability services. Eighteen counties and one city received a separate allocation directly from the United States Treasury in addition to the funding allocated to them in accordance with Act 1 of 2021.

DHS officially launched ERAP1 on March 15, 2021, though not all counties were operational on that date. All counties, however, were operational and accepting applications as of March 29, 2021. (See Table 1 for application data).

PA Act 24 of 2021 amended some ERAP1 program rules, and further gives DHS authority to administer funds allocated under the federal American Rescue Plan Act of 2021 (Pub.L.117.2) Section 3201 (b) which allocated \$500,166,870.00 to Pennsylvania. These funds are referred to as ERAP2.

The total allocation amounts used in Table 4 total ERAP2 Funds column reflect the funds issued to counties on September 9, 2021 and are inclusive of the high-needs funds. Table 3 reflects the total number of applications under ERAP2.

Definitions

DHS uses the following definitions in this report:

- Rental Assistance - includes assistance for rent arrears, current rent, future rent, and utilities included as a part of the rent payment per the rental agreement
- Utility Assistance - includes payment for utilities, utility arrearages and future utility payments not included as a part of the rent
- Other Expenses Related to Housing – includes, but is not limited to, assistance with relocation expenses, rental fees, reasonable late fees, internet for work or home schooling (at county option).
- Housing Stability Services - services provided to coordinate the activities necessary for the client to obtain or retain housing including, but not limited to, case management and other services intended to keep households stably housed

NOTE: This report reflects emergency rental assistance as implemented with funds allocated per Act 1 of 2021 and Act 24 of 2021 and does not include expenditures of funds received by local municipalities directly from the United States Treasury.

All figures below reflect self-reported data by the county as of December 31, 2021 and may reflect the county made corrections for previous months.

ERAP1

APPLICATIONS December 1 – December 31, 2021

Number of applications pending at beginning of December:	77,547
Total number of households that applied for assistance:	18,851
Total number of households that received assistance:	11,376
Total number of households denied assistance:	1,891
Total number of applications pending at end of December:	83,131

ERAP1

FISCAL December 1 – December 31, 2021

Total state funds allocated:	\$ 564,109,583.10
Total state funds remaining as of November 30, 2021:	\$ 250,673,345.50
Emergency Rental Assistance paid or obligated during December:	\$ 30,137,758.88
Rental Assistance	\$ 27,273,143.14
Utility Assistance	\$ 2,360,632.97
Other Expenses Related to Housing	\$ 503,982.77
Housing Stability Services paid or obligated during December:	\$ 154,099.74
County administrative costs paid or obligated during December:	\$ 1,914,822.78
Personnel	\$ 889,767.07
Operating	\$ 459,949.17
Purchased Services	\$ 565,106.54
Total amount paid or obligated during December:	\$ 32,206,681.40
Total amount of funds remaining (YTD):	\$ 218,466,664.10

TABLE 1: ERAP1 APPLICATIONS AND DISPOSITIONS AS REPORTED BY COUNTIES
DECEMBER 31, 2021

County	Applications Received	Applications Approved	Applications Denied	Applications Pending
Adams	128	128	6	25
Allegheny	3,302	3,252	8	1,943
Armstrong	235	144	21	197
Beaver	40	186	3	392
Bedford	44	27	12	27
Berks	83	83	0	0
Blair	329	251	6	1,852
Bradford	58	54	3	101
Bucks	205	240	6	20
Butler	150	228	6	310
Cambria	130	74	100	929
Cameron	9	20	1	3
Carbon	73	66	2	12
Centre	235	210	64	130
Chester	310	80	25	440
Clarion	42	21	29	235
Clearfield	100	100	0	0
Clinton	86	53	22	196
Columbia	274	172	49	73
Crawford	193	181	0	31
Cumberland	0	0	0	235
Dauphin	245	64	4	1,555
Delaware	0	0	0	0
Elk	21	21	0	13
Erie	0	0	0	1,175
Fayette	249	126	35	1,255
Forest	1	1	0	2
Franklin	271	268	7	31
Fulton	12	14	0	1
Greene	72	61	10	46
Huntingdon	79	42	15	181
Indiana	58	30	16	276
Jefferson	97	42	18	110
Juniata	16	6	9	5
Lackawanna	0	0	0	774
Lancaster	0	0	0	0

TABLE 1: ERAP1 APPLICATIONS AND DISPOSITIONS AS REPORTED BY COUNTIES
DECEMBER 31, 2021

County	Applications Received	Applications Approved	Applications Denied	Applications Pending
Lawrence	97	29	58	221
Lebanon	119	95	24	0
Lehigh	255	459	12	42
Luzerne	2,334	458	12	1,872
Lycoming	192	90	18	778
McKean	65	47	19	0
Mercer	193	124	0	86
Mifflin	60	37	23	24
Monroe	310	147	0	845
Montgomery	829	749	685	958
Montour	29	27	1	47
Northampton	393	393	0	187
Northumberland	267	146	32	1,091
Perry	0	0	0	0
Philadelphia	4,655	5	331	63,089
Pike	44	43	14	14
Potter	15	10	4	11
Schuylkill	214	186	13	132
Snyder	19	37	6	67
Somerset	145	66	25	256
Sullivan	1	3	0	1
Susquehanna	44	34	0	67
Tioga	24	14	12	111
Union	22	29	4	53
Venango	85	68	30	38
Warren	54	32	22	54
Washington	330	439	28	73
Wayne	39	18	9	35
Westmoreland	187	243	32	150
Wyoming	15	11	0	60
York	668	1,092	0	194
State Total	18,851	11,376	1,891	83,131

**Shaded counties did not report any data. Note: Allegheny and Beaver Counties reported applications received, approved, denied and pending for December for ERAP1 but are shaded because they did not have ERAP1 funds remaining to expend for the month of December.*

TABLE 2: ERAP1 ALLOCATIONS AND EXPENDED FUNDS AS REPORTED BY COUNTIES
DECEMBER 31, 2021

County	Amount of Direct Federal Allocation Received	DHS Allocation	DHS funds Paid or Obligated December 1 - 30	DHS funds Remaining YTD
Adams	\$0	\$6,774,933.20	\$428,974.79	\$3,047,525.93
Allegheny	\$36,234,405.90	\$43,745,242.84	\$0.00	\$0.00
Armstrong	\$0	\$4,257,640.60	\$460,902.96	\$1,645,642.51
Beaver	\$0	\$10,781,660.09	\$0.00	\$0.00
Bedford	\$0	\$3,149,608.30	\$81,759.66	\$2,297,660.02
Berks	\$12,549,393.60	\$15,150,690.51	\$1,365,039.87	\$490,617.65
Blair	\$0	\$8,012,730.31	\$843,662.84	\$2,796,935.69
Bradford	\$0	\$3,967,462.02	\$205,243.93	\$2,295,446.92
Bucks	\$18,720,516.20	\$22,600,992.39	\$1,333,940.25	\$16,762,046.92
Butler	\$0	\$12,355,148.83	\$419,183.77	\$8,413,974.92
Cambria	\$0	\$8,562,767.36	\$383,787.58	\$6,927,627.48
Cameron	\$0	\$292,480.54	\$23,213.52	\$0.00
Carbon	\$0	\$4,221,269.62	\$485,761.00	\$1,500,424.56
Centre	\$0	\$10,680,110.74	\$833,584.08	\$4,911,923.32
Chester	\$15,643,059.70	\$18,885,626.18	\$454,523.53	\$18,215,037.33
Clarion	\$0	\$2,528,078.93	\$66,157.17	\$936,820.82
Clearfield	\$0	\$5,212,625.41	\$469,861.60	\$471,370.48
Clinton	\$0	\$2,540,838.37	\$462,158.70	\$0.00
Columbia	\$0	\$4,272,702.00	\$450,367.65	\$1,470,150.14
Crawford	\$0	\$5,566,075.02	\$562,197.42	\$0.00
Cumberland	\$7,549,647.80	\$9,114,574.00	\$0.00	\$8,153,674.00
Dauphin	\$8,292,455.40	\$10,011,354.30	\$511,605.62	\$2,023,362.87
Delaware	\$16,887,319.80	\$20,387,802.41	\$12,444.34	\$782,222.62
Elk	\$0	\$1,967,189.78	\$137,077.29	\$984,197.13
Erie	\$8,037,065.90	\$9,703,026.53	\$0.00	\$0.00
Fayette	\$0	\$8,502,390.22	\$846,579.56	\$2,782,778.19
Forest	\$0	\$476,637.39	\$7,307.14	\$421,120.59
Franklin	\$0	\$10,196,172.84	\$881,843.10	\$2,493,481.11
Fulton	\$0	\$955,642.51	\$39,787.45	\$489,024.08
Greene	\$0	\$2,383,055.41	\$164,264.76	\$1,480,140.79
Huntingdon	\$0	\$2,969,134.58	\$138,069.25	\$1,972,822.02
Indiana	\$0	\$5,529,506.73	\$137,724.27	\$4,513,312.41
Jefferson	\$0	\$2,856,075.43	\$129,926.60	\$1,763,606.67
Juniata	\$0	\$1,628,670.03	\$27,508.75	\$1,416,504.06
Lackawanna	\$6,247,641.20	\$7,542,681.42	\$0.00	\$1,198,497.91
Lancaster	\$16,260,899.00	\$19,631,534.12	\$0.00	\$19,631,534.12
Lawrence	\$0	\$5,624,150.19	\$284,608.41	\$2,847,009.98

TABLE 2: ERAP1 ALLOCATIONS AND EXPENDED FUNDS AS REPORTED BY COUNTIES
DECEMBER 31, 2021

County	Amount of Direct Federal Allocation Received	DHS Allocation	DHS funds Paid or Obligated December 1 - 30	DHS funds Remaining YTD
Lebanon	\$0	\$9,325,768.65	\$530,421.00	\$5,177,222.81
Lehigh	\$11,004,542.00	\$13,285,614.96	\$2,900,150.00	\$5,401,723.32
Luzerne	\$9,458,051.60	\$11,418,560.83	\$1,405,201.03	\$7,783,880.35
Lycoming	\$0	\$7,451,709.62	\$466,608.96	\$1,136,997.56
McKean	\$0	\$2,671,918.58	\$139,925.53	\$1,457,427.95
Mercer	\$0	\$7,196,849.69	\$726,831.13	\$2,041,874.58
Mifflin	\$0	\$3,034,510.26	\$127,279.29	\$1,999,879.24
Monroe	\$0	\$11,198,775.35	\$651,441.82	\$0.00
Montgomery	\$24,758,714.80	\$29,890,816.95	\$2,977,988.89	\$16,053,484.11
Montour	\$0	\$1,198,992.63	\$79,053.87	\$802,232.08
Northampton	\$9,096,555.30	\$10,982,131.81	\$1,097,657.76	\$6,291,354.41
Northumberland	\$0	\$5,974,771.68	\$631,437.40	\$1,465,539.75
Perry	\$0	\$3,043,323.48	\$0.00	\$2,364,722.37
Philadelphia	\$47,200,241.70	\$56,984,128.38	\$105,568.33	\$1,673,831.65
Pike	\$0	\$3,670,574.87	\$176,043.51	\$1,285,308.33
Potter	\$0	\$1,086,920.04	\$34,503.94	\$802,974.37
Schuylkill	\$0	\$9,297,224.34	\$752,060.73	\$4,021,439.35
Snyder	\$0	\$2,655,278.64	\$142,296.05	\$1,504,747.34
Somerset	\$0	\$4,830,631.48	\$213,715.23	\$2,803,178.25
Sullivan	\$0	\$398,962.66	\$5,500.00	\$328,591.61
Susquehanna	\$0	\$2,652,384.80	\$112,494.47	\$1,918,299.30
Tioga	\$0	\$2,669,682.39	\$55,364.73	\$2,110,561.22
Union	\$0	\$2,954,599.35	\$97,942.46	\$1,725,526.45
Venango	\$0	\$3,332,449.74	\$318,248.28	\$1,174,888.14
Warren	\$0	\$2,577,603.97	\$100,107.80	\$541,799.37
Washington	\$6,163,941.60	\$7,441,632.24	\$1,162,020.52	\$5,429,169.16
Wayne	\$0	\$3,378,028.56	\$98,024.66	\$2,602,580.48
Westmoreland	\$10,396,118.50	\$12,551,074.63	\$920,375.93	\$5,181,357.27
Wyoming	\$0	\$1,762,249.51	\$29,420.40	\$1,491,756.65
York	\$13,380,549.10	\$16,154,131.86	\$3,499,930.82	\$6,757,823.39
State Total	\$277,881,119.10	\$564,109,583.10	\$ 32,206,861.40	\$218,466,664.10

ERAP2

APPLICATIONS: December 1 – December 31, 2021

Number of applications pending at beginning of December:	17,690
Total number of households that applied for assistance:	5,659
Total number of households that received assistance:	2,096
Total number of households denied assistance:	341
Total number of applications pending at end of December*:	20,931

ERAP2

FISCAL: December 1 – December 31, 2021

Total state funds allocated:	\$ 232,250,153.59
Total state funds remaining as of November 30, 2021:	\$ 208,650,487.90
Emergency Rental Assistance paid or obligated during December:	\$ 14,488,213.91
Rental Assistance	\$ 13,775,988.49
Utility Assistance	\$ 272,158.86
Other Expenses Related to Housing	\$ 440,066.56
Housing Stability Services paid or obligated during December:	\$ 1,087.67
County administrative costs paid or obligated during December:	\$ 596,081.12
Personnel	\$ 360,818.38
Operating	\$ 211,531.96
Purchased Services	\$ 23,730.78
Total amount paid or obligated during December:	\$ 15,085,382.70
Total amount of funds remaining (YTD):	\$ 193,565,105.20

** Due to data issues at the county level, there may be additivity issues or discrepancies in the report. DHS is working with the counties to resolve the issues and improve data quality.*

TABLE 3: ERAP2 APPLICATIONS AND DISPOSITIONS AS REPORTED BY COUNTIES
DECEMBER 1-31, 2021

County	Applications Received	Applications Approved	Applications Denied	Applications Pending
Adams	19	15	1	3
Allegheny	0	0	0	0
Armstrong	0	0	0	0
Beaver	0	0	0	0
Bedford	0	0	0	0
Berks	0	0	0	0
Blair	0	0	0	0
Bradford	50	19	1	49
Bucks	205	186	0	19
Butler	0	0	0	0
Cambria	0	0	0	0
Cameron	4	8	0	0
Carbon	0	0	0	0
Centre	0	0	0	0
Chester	37	37	0	0
Clarion	35	35	0	0
Clearfield	0	0	0	0
Clinton	0	0	0	0
Columbia	3	3	0	0
Crawford	0	0	0	0
Cumberland	0	0	0	0
Dauphin	0	0	0	0
Delaware	0	0	0	357
Elk	6	6	0	0
Erie	534	249	7	362
Fayette	8	8	0	0
Forest	0	0	0	0
Franklin	39	32	1	6
Fulton	0	0	0	0
Greene	0	0	0	0
Huntingdon	0	0	0	0
Indiana	5	3	0	2
Jefferson	3	2	0	1
Juniata	0	0	0	0

TABLE 3: ERAP2 APPLICATIONS AND DISPOSITIONS AS REPORTED BY COUNTIES
DECEMBER 1-31, 2021

County	Applications Received	Applications Approved	Applications Denied	Applications Pending
Lackawanna	9	9	0	0
Lancaster	0	0	0	0
Lawrence	23	12	0	11
Lebanon	0	0	0	0
Lehigh	0	0	0	0
Luzerne	0	0	0	0
Lycoming	0	0	0	0
McKean	0	0	0	0
Mercer	0	0	0	0
Mifflin	2	0	0	2
Monroe	0	0	0	0
Montgomery	0	0	0	0
Montour	0	0	0	0
Northampton	0	0	0	0
Northumberland	0	0	0	0
Perry	10	10	0	0
Philadelphia	4,655	1,455	331	20,105
Pike	0	0	0	0
Potter	3	3	0	1
Schuylkill	0	0	0	0
Snyder	0	0	0	0
Somerset	0	0	0	0
Sullivan	0	0	0	0
Susquehanna	0	0	0	0
Tioga	0	0	0	0
Union	0	0	0	0
Venango	0	0	0	0
Warren	0	0	0	0
Washington	0	0	0	0
Wayne	9	4	0	13
Westmoreland	0	0	0	0
Wyoming	0	0	0	0
York	0	0	0	0
State Total	5,659	2,096	341	20,931

*Shaded counties did not report any data.

TABLE 4: ERAP2 ALLOCATIONS AND EXPENDED FUNDS AS REPORTED BY COUNTIES
DECEMBER 31, 2021

County	Amount of Direct Federal Allocation Received	TOTAL ERAP2 Funds	DHS funds Paid or Obligated December 1 - 30	DHS funds Remaining YTD
Adams	\$0	\$2,147,169.60	\$45,260.92	\$2,101,908.68
Allegheny	\$28,670,589.50	\$11,447,122.69	\$0.00	\$11,447,122.69
Armstrong	\$0	\$1,349,367.76	\$2,014.86	\$1,345,450.44
Beaver	\$0	\$8,788,615.84	\$0.00	\$8,786,587.10
Bedford	\$0	\$998,200.71	\$0.00	\$998,200.71
Berks	\$9,929,747.80	\$11,807,375.17	\$0.00	\$11,807,375.17
Blair	\$0	\$2,539,462.82	\$0.00	\$2,539,462.82
Bradford	\$0	\$1,257,401.90	\$70,459.10	\$1,130,752.69
Bucks	\$14,812,668.30	\$7,170,897.51	\$816,685.77	\$5,576,244.77
Butler	\$0	\$3,915,699.11	\$0.00	\$3,915,699.11
Cambria	\$0	\$2,713,785.24	\$0.00	\$2,713,785.24
Cameron	\$0	\$92,695.42	\$7,280.09	\$81,422.34
Carbon	\$0	\$1,337,840.76	\$0.00	\$1,337,840.76
Centre	\$0	\$3,384,831.76	\$0.00	\$3,384,831.76
Chester	\$12,377,621.00	\$5,992,077.14	\$131,390.65	\$5,433,127.54
Clarion	\$0	\$801,220.33	\$104,402.00	\$696,818.33
Clearfield	\$0	\$1,652,029.69	\$0.00	\$1,652,029.69
Clinton	\$0	\$805,264.16	\$0.00	\$805,264.16
Columbia	\$0	\$1,354,141.15	\$9,012.53	\$1,337,305.43
Crawford	\$0	\$1,764,047.96	\$0.00	\$1,764,047.96
Cumberland	\$5,973,682.90	\$2,891,894.11	\$0.00	\$2,891,894.11
Dauphin	\$6,561,431.80	\$3,176,426.72	\$0.00	\$3,176,426.72
Delaware	\$13,362,145.80	\$17,022,482.09	\$0.00	\$15,530,516.13
Elk	\$0	\$623,458.56	\$6,640.92	\$604,123.70
Erie	\$6,359,354.10	\$8,101,392.79	\$1,136,003.64	\$6,529,687.04
Fayette	\$0	\$2,694,650.01	\$25,419.15	\$2,651,125.31
Forest	\$0	\$151,059.99	\$0.00	\$151,059.99
Franklin	\$0	\$3,231,458.04	\$77,547.59	\$3,153,910.45
Fulton	\$0	\$302,870.38	\$0.00	\$302,870.38
Greene	\$0	\$755,258.24	\$0.00	\$755,258.24
Huntingdon	\$0	\$941,003.45	\$0.00	\$941,003.45
Indiana	\$0	\$1,752,458.42	\$4,577.26	\$1,752,458.42
Jefferson	\$0	\$905,171.77	\$4,112.68	\$901,059.09
Juniata	\$0	\$516,171.99	\$0.00	\$504,558.99
Lackawanna	\$4,943,466.10	\$6,297,645.84	\$35,809.94	\$6,248,450.90

TABLE 4: ERAP2 ALLOCATIONS AND EXPENDED FUNDS AS REPORTED BY COUNTIES
DECEMBER 31, 2021

County	Amount of Direct Federal Allocation Received	TOTAL ERAP2 Funds	DHS funds Paid or Obligated December 1 - 30	DHS funds Remaining YTD
Lancaster	\$12,866,488.30	\$6,228,740.63	\$0.00	\$6,228,740.63
Lawrence	\$0	\$1,782,453.64	\$121,072.25	\$1,537,574.14
Lebanon	\$0	\$2,955,602.12	\$0.00	\$2,955,602.12
Lehigh	\$8,707,379.10	\$3,476,539.47	\$0.00	\$3,476,539.47
Luzerne	\$7,483,713.60	\$3,622,908.58	\$0.00	\$3,622,908.58
Lycoming	\$0	\$2,361,659.35	\$0.00	\$2,359,959.35
McKean	\$0	\$846,807.22	\$0.00	\$846,807.22
Mercer	\$0	\$2,280,886.97	\$0.00	\$2,280,886.97
Mifflin	\$0	\$961,722.87	\$0.00	\$940,084.87
Monroe	\$0	\$3,549,211.37	\$0.00	\$3,549,211.37
Montgomery	\$19,590,412.30	\$7,821,738.45	\$0.00	\$7,821,738.45
Montour	\$0	\$379,994.97	\$0.00	\$379,994.97
Northampton	\$7,197,678.50	\$3,484,437.32	\$0.00	\$2,669,443.85
Northumberland	\$0	\$1,893,575.59	\$0.00	\$1,893,575.59
Perry	\$0	\$964,516.03	\$15,795.58	\$932,844.77
Philadelphia	\$37,347,342.20	\$44,409,393.80	\$12,445,680.79	\$12,704,380.44
Pike	\$0	\$1,163,309.88	\$0.00	\$1,163,309.88
Potter	\$0	\$344,475.97	\$10,192.18	\$305,195.00
Schuylkill	\$0	\$2,946,555.61	\$0.00	\$2,946,555.61
Snyder	\$0	\$841,533.56	\$0.00	\$841,533.56
Somerset	\$0	\$1,530,964.92	\$0.00	\$1,519,836.93
Sullivan	\$0	\$126,442.64	\$0.00	\$126,442.64
Susquehanna	\$0	\$840,616.41	\$0.00	\$840,616.41
Tioga	\$0	\$846,098.51	\$0.00	\$846,098.51
Union	\$0	\$936,396.82	\$0.00	\$936,396.82
Venango	\$0	\$1,056,148.39	\$0.00	\$1,056,148.39
Warren	\$0	\$816,916.23	\$0.00	\$816,916.23
Washington	\$4,877,238.50	\$2,361,099.07	\$0.00	\$2,361,099.07
Wayne	\$0	\$1,070,593.62	\$16,024.80	\$993,395.85
Westmoreland	\$8,225,962.00	\$3,982,235.31	\$0.00	\$3,982,235.31
Wyoming	\$0	\$558,507.15	\$0.00	\$558,507.15
York	\$10,587,402.30	\$5,125,422.00	\$0.00	\$5,125,422.00
State Total	\$ 219,874,324.10	\$ 232,250,153.59	\$15,085,352.70	\$193,565,105.20

ERAP Program Summary

The following tables provide a look at the application totals and expenditures for both ERAP1 and ERAP2 for the month of December 2021. These totals may be adjusted as information is updated from the counties; however, it is being provided to show the total monthly numbers across both programs.

APPLICATIONS: December 1 – December 31, 2021

Number of applications pending at beginning of December:	95,237
Total number of households that applied for assistance:	24,510
Total number of households that received assistance:	13,472
Total number of households denied assistance:	2,232
Total number of applications pending at end of December:	104,062

FISCAL: December 1 – December 31, 2021

Total state funds allocated:	\$ 796,359,736.69
Total state funds remaining as of November 30, 2021:	\$ 459,323,833.40
Emergency Rental Assistance paid or obligated during December:	\$ 44,625,972.79
Rental Assistance	\$ 41,049,131.63
Utility Assistance	\$ 2,632,791.83
Other Expenses Related to Housing	\$ 944,049.33
Housing Stability Services paid or obligated during December:	\$ 155,187.41
County administrative costs paid or obligated during December:	\$ 2,510,903.90
Personnel	\$ 1,250,585.45
Operating	\$ 671,481.13
Purchased Services	\$ 588,837.32
Total amount paid or obligated during December:	\$ 47,292,064.10
Total amount of funds remaining (YTD):	\$ 412,031,769.30

**These numbers include applications reported by counties that received a direct allocation from the U.S. Treasury but did not expend any DHS allocated funds*

TABLE 5: COMBINED ERAP1 AND ERAP2 APPLICATIONS AND DISPOSITIONS AS REPORTED BY COUNTIES
DECEMBER 31, 2021

County	Applications Received	Applications Approved	Applications Denied	Applications Pending
Adams	147	143	7	28
Allegheny	3,302	3,252	8	1,943
Armstrong	235	144	21	197
Beaver	40	186	3	392
Bedford	44	27	12	27
Berks	83	83	0	0
Blair	329	251	6	1,852
Bradford	108	73	4	150
Bucks	410	426	6	39
Butler	150	228	6	310
Cambria	130	74	100	929
Cameron	13	28	1	3
Carbon	73	66	2	12
Centre	235	210	64	130
Chester	347	117	25	440
Clarion	77	56	29	235
Clearfield	100	100	0	0
Clinton	86	53	22	196
Columbia	277	175	49	73
Crawford	193	181	0	31
Cumberland	0	0	0	235
Dauphin	245	64	4	1,555
Delaware	0	0	0	357
Elk	27	27	0	13
Erie	534	249	7	1,537
Fayette	257	134	35	1,255
Forest	1	1	0	2
Franklin	310	300	8	37
Fulton	12	14	0	1
Greene	72	61	10	46
Huntingdon	79	42	15	181
Indiana	63	33	16	278
Jefferson	100	44	18	111
Juniata	16	6	9	5
Lackawanna	9	9	0	774
Lancaster	0	0	0	0
Lawrence	120	41	58	232
Lebanon	119	95	24	0

TABLE 5: COMBINED ERAP1 AND ERAP2 APPLICATIONS AND DISPOSITIONS AS REPORTED BY COUNTIES
DECEMBER 31, 2021

County	Applications Received	Applications Approved	Applications Denied	Applications Pending
Lehigh	255	459	12	42
Luzerne	2,334	458	12	1,872
Lycoming	192	90	18	778
McKean	65	47	19	0
Mercer	193	124	0	86
Mifflin	62	37	23	26
Monroe	310	147	0	845
Montgomery	829	749	685	958
Montour	29	27	1	47
Northampton	393	393	0	187
Northumberland	267	146	32	1,091
Perry	10	10	0	0
Philadelphia	9,310	1,460	662	83,194
Pike	44	43	14	14
Potter	18	13	4	12
Schuylkill	214	186	13	132
Snyder	19	37	6	67
Somerset	145	66	25	256
Sullivan	1	3	0	1
Susquehanna	44	34	0	67
Tioga	24	14	12	111
Union	22	29	4	53
Venango	85	68	30	38
Warren	54	32	22	54
Washington	330	439	28	73
Wayne	48	22	9	48
Westmoreland	187	243	32	150
Wyoming	15	11	0	60
York	668	1,092	0	194
State Total	24,510	13,472	2,232	104,062

TABLE 6: COMBINED ERAP1 and ERAP2 ALLOCATIONS AND EXPENDED FUNDS
AS REPORTED BY COUNTIES — DECEMBER 31, 2021

County	TOTAL ERAP Direct Federal Allocation	DHS Allocation ERAP1 & ERAP2	DHS ERAP1 & 2 funds Paid or Obligated December 1 - 30	DHS TOTAL ERAP funds Remaining YTD
Adams	\$0	\$8,922,102.80	\$474,235.71	\$5,149,434.61
Allegheny	\$64,904,995.40	\$55,192,365.53	\$0.00	\$11,447,122.69
Armstrong	\$0	\$5,607,008.36	\$462,917.82	\$2,991,092.95
Beaver	\$0	\$19,570,275.93	\$0.00	\$8,786,587.10
Bedford	\$0	\$4,147,809.01	\$81,759.66	\$3,295,860.73
Berks	\$22,479,141.40	\$26,958,065.68	\$1,365,039.87	\$12,297,992.82
Blair	\$0	\$10,552,193.13	\$843,662.84	\$5,336,398.51
Bradford	\$0	\$5,224,863.92	\$275,703.03	\$3,426,199.61
Bucks	\$33,533,184.50	\$29,771,889.90	\$2,150,626.02	\$22,338,291.69
Butler	\$0	\$16,270,847.94	\$419,183.77	\$12,329,674.03
Cambria	\$0	\$11,276,552.60	\$383,787.58	\$9,641,412.72
Cameron	\$0	\$385,175.96	\$30,493.61	\$81,422.34
Carbon	\$0	\$5,559,110.38	\$485,761.00	\$2,838,265.32
Centre	\$0	\$14,064,942.50	\$833,584.08	\$8,296,755.08
Chester	\$28,020,680.70	\$24,877,703.32	\$585,914.18	\$23,648,164.87
Clarion	\$0	\$3,329,299.26	\$170,559.17	\$1,633,639.15
Clearfield	\$0	\$6,864,655.10	\$469,861.60	\$2,123,400.17
Clinton	\$0	\$3,346,102.53	\$462,158.70	\$805,264.16
Columbia	\$0	\$5,626,843.15	\$459,380.18	\$2,807,455.57
Crawford	\$0	\$7,330,122.98	\$562,197.42	\$1,764,047.96
Cumberland	\$13,523,330.70	\$12,006,468.11	\$0.00	\$11,045,568.11
Dauphin	\$14,853,887.20	\$13,187,781.02	\$511,605.62	\$5,199,789.59
Delaware	\$30,249,465.60	\$37,410,284.50	\$12,444.34	\$16,312,738.75
Elk	\$0	\$2,590,648.34	\$143,718.21	\$1,588,320.83
Erie	\$14,396,420.00	\$17,804,419.32	\$1,136,003.64	\$6,529,687.04
Fayette	\$0	\$11,197,040.23	\$871,998.71	\$5,433,903.50
Forest	\$0	\$627,697.38	\$7,307.14	\$572,180.58
Franklin	\$0	\$13,427,630.88	\$959,390.69	\$5,647,391.56
Fulton	\$0	\$1,258,512.89	\$39,787.45	\$791,894.46
Greene	\$0	\$3,138,313.65	\$164,264.76	\$2,235,399.03
Huntingdon	\$0	\$3,910,138.03	\$138,069.25	\$2,913,825.47
Indiana	\$0	\$7,281,965.15	\$142,301.53	\$6,265,770.83
Jefferson	\$0	\$3,761,247.20	\$134,039.28	\$2,664,665.76
Juniata	\$0	\$2,144,842.02	\$27,508.75	\$1,921,063.05
Lackawanna	\$11,191,107.30	\$13,840,327.26	\$35,809.94	\$7,446,948.81
Lancaster	\$29,127,387.30	\$25,860,274.75	\$0.00	\$25,860,274.75
Lawrence	\$0	\$7,406,603.83	\$405,680.66	\$4,384,584.12
Lebanon	\$0	\$12,281,370.77	\$530,421.00	\$8,132,824.93
Lehigh	\$19,711,921.10	\$16,762,154.43	\$2,900,150.00	\$8,878,262.79
Luzerne	\$16,941,765.20	\$15,041,469.41	\$1,405,201.03	\$11,406,788.93

TABLE 6: COMBINED ERAP1 and ERAP2 ALLOCATIONS AND EXPENDED FUNDS
AS REPORTED BY COUNTIES — DECEMBER 31, 2021

County	TOTAL ERAP Direct Federal Allocation	DHS Allocation ERAP1 & ERAP2	DHS ERAP1 & 2 funds Paid or Obligated December 1 - 30	DHS TOTAL ERAP funds Remaining YTD
Lycoming	\$0	\$9,813,368.97	\$466,608.96	\$3,496,956.91
McKean	\$0	\$3,518,725.80	\$139,925.53	\$2,304,235.17
Mercer	\$0	\$9,477,736.66	\$726,831.13	\$4,322,761.55
Mifflin	\$0	\$3,996,233.13	\$127,279.29	\$2,939,964.11
Monroe	\$0	\$14,747,986.72	\$651,441.82	\$3,549,211.37
Montgomery	\$44,349,127.10	\$37,712,555.40	\$2,977,988.89	\$23,875,222.56
Montour	\$0	\$1,578,987.60	\$79,053.87	\$1,182,227.05
Northampton	\$16,294,233.80	\$14,466,569.13	\$1,097,657.76	\$8,960,798.26
Northumberland	\$0	\$7,868,347.27	\$631,437.40	\$3,359,115.34
Perry	\$0	\$4,007,839.51	\$15,795.58	\$3,297,567.14
Philadelphia	\$84,547,583.90	\$101,393,522.18	\$12,551,249.12	\$14,378,212.09
Pike	\$0	\$4,833,884.75	\$176,043.51	\$2,448,618.21
Potter	\$0	\$1,431,396.01	\$44,696.12	\$1,108,169.37
Schuylkill	\$0	\$12,243,779.95	\$752,060.73	\$6,967,994.96
Snyder	\$0	\$3,496,812.20	\$142,296.05	\$2,346,280.90
Somerset	\$0	\$6,361,596.40	\$213,715.23	\$4,323,015.18
Sullivan	\$0	\$525,405.30	\$5,500.00	\$455,034.25
Susquehanna	\$0	\$3,493,001.21	\$112,494.47	\$2,758,915.71
Tioga	\$0	\$3,515,780.90	\$55,364.73	\$2,956,659.73
Union	\$0	\$3,890,996.17	\$97,942.46	\$2,661,923.27
Venango	\$0	\$4,388,598.13	\$318,248.28	\$2,231,036.53
Warren	\$0	\$3,394,520.20	\$100,107.80	\$1,358,715.60
Washington	\$11,041,180.10	\$9,802,731.31	\$1,162,020.52	\$7,790,268.23
Wayne	\$0	\$4,448,622.18	\$114,049.46	\$3,595,976.33
Westmoreland	\$18,622,080.50	\$16,533,309.94	\$920,375.93	\$9,163,592.58
Wyoming	\$0	\$2,320,756.66	\$29,420.40	\$2,050,263.80
York	\$23,967,951.40	\$21,279,553.86	\$3,499,930.82	\$11,883,245.39
State Total	\$497,755,443.20	\$796,359,736.69	\$47,292,064.10	\$412,031,769.30