



pennsylvania

DEPARTMENT OF HUMAN SERVICES
OFFICE OF MENTAL HEALTH AND
SUBSTANCE ABUSE SERVICES



Pennsylvania State Hospital Risk Management Summary and Indicator Report

April 2021

Prepared by:
Christina Sterner, M.S. CPIE
Wernersville State Hospital
E-Mail: csterner@pa.gov
Contributors:
SMH CPIEs & PI Staff
Valerie Minnich, RPh
August 18, 2021

Introduction

The State Hospital Risk Management System defines an incident as any patient-related event that has the potential for, or which results in, a negative impact upon the quality of patient care or services, including injury or death of a person served in the state hospital system. Past reports can be found on the DHS website using the following link.

<http://www.dhs.pa.gov/publications/forproviders/statehospitalriskmanagementsummaryreports/>

The data dictionary for the measurement system was updated on October 1, 2008, and is available for review as attachments to OMHSAS Bulletin titled Management of Incidents: SI-815 Incident Reporting and Risk Management Policy and Procedural Change. (Available via bulletin search at <http://www.dhs.pa.gov/> .)

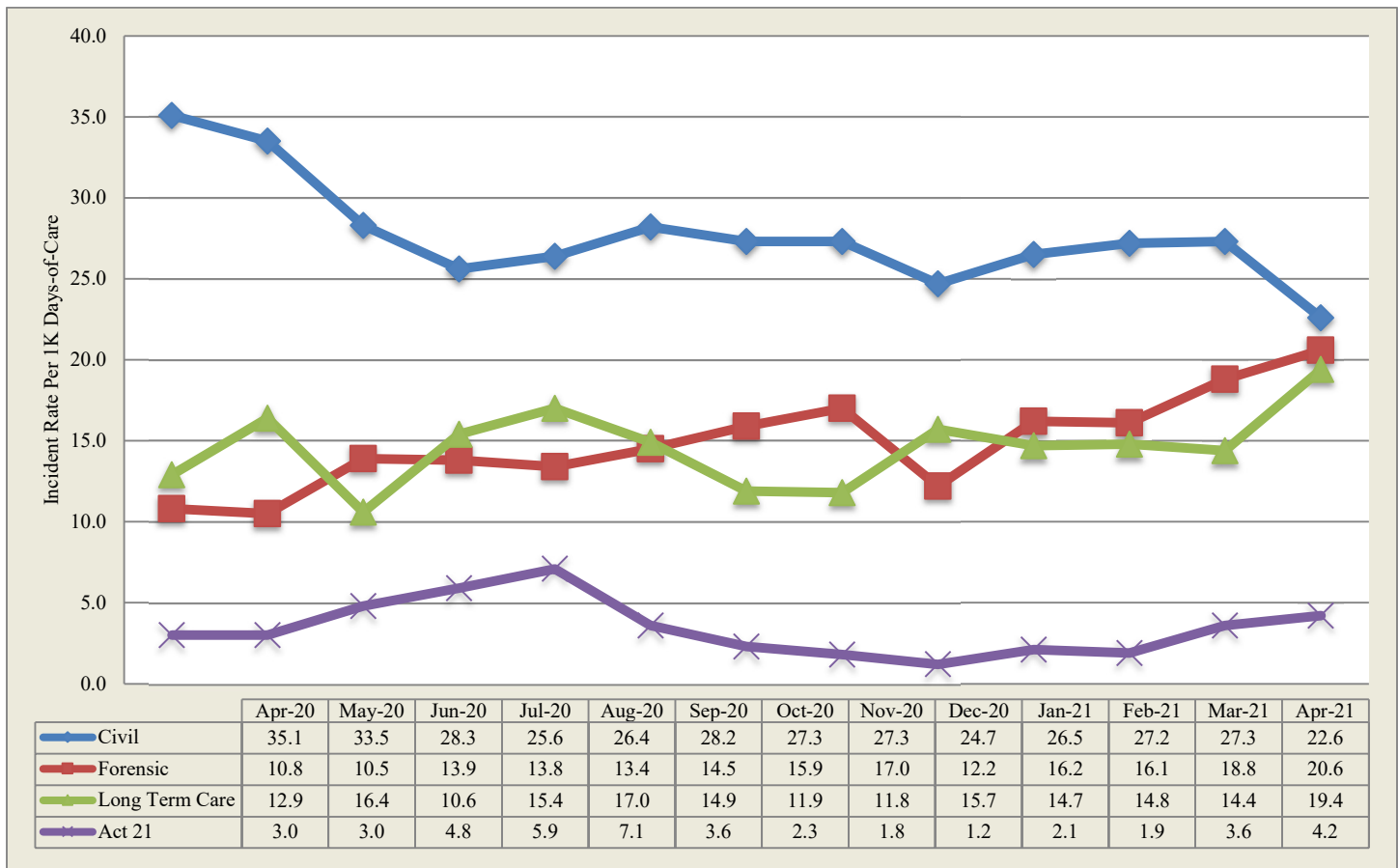
Table of Contents		
Indicator/Measure	Table	Page
Risk Management Indicators		
Census and Rates of Incidents	1	3
Thirteen-Month Trend of Incidents		3
Six-Month Summary of Selected Events		4
Category or Cause of Incidents: Civil	2	5
Primary Effect of Incidents: Civil	3	6
Category or Cause of Incidents: Forensic	4	7
Effect of Incidents: Forensic	5	7
Cause of Incidents: Long Term Care	6	8
Effect of Incidents: Long Term Care	7	8
Cause of Incidents: SRTP	8	9
Effect of Incidents: SRTP	9	9
13-Month Rate of Type 1 Falls per 1,000 Days of Care	10	10
13-Month Trend of Type 1 Falls		10
Hours of Seclusion Use	11	11
Number of Seclusion Events	12	11
Total Hours of Mechanical Restraint by Unit	13	11
Hours of Mechanical Restraint Use: 12 Months	14	11
Number of Mechanical Restraint Events: 12 Months	15	11
Hours of Physical Restraint Use by Unit	16	12
Hours of Physical Restraint Use: 12 Months	17	12
Number of Physical Restraint Events: 12 Months	18	12
24-Month Trend of Restraint and Seclusion Hours		13
Patient-to-Patient Assaults by Unit	19	14
13-Month Rate of Patient-to-Patient Assault Events with Injury per 1,000 Days-of-Care	20	14
Patient-to-Staff Assaults by Unit	21	15
13-Month Rate of Patient-to-Staff Assaults with Injury to Staff per 1,000 Days-of-Care	22	15
Risk Adjusted Table of Selected Safety Indicators	23	16
Wellness Indicators		
Tobacco Users	24	17
Reasons for Hospitalization as a Result of an Incident	25	17
Medication Use Indicators		
Benzodiazepines	26	18
Multiple Atypicals	27	18
Typical-Atypical	28	18
STAT Medication Usage		
Civil	29	19
Forensic	30	20
ACT 21 (SRTP)	31	20

During April 2021, a total of 874 incident reports were completed by the state hospital system. Additional records addressing specific categories from the previous month were included on page 4 of this report. The following is a breakdown of incidents by individual facility and type of care:

Table 1 - Number of Incident Reports

	Census 4/30/2021	Days Provided	Incidents	Per 1000 Days-of-Care
Clarks Summit	137	4052	49	12.1
Danville	158	4783	127	26.6
Norristown	118	3531	60	17.0
Torrance	148	4254	114	26.8
Warren	135	4133	128	31.0
Wernersville	245	7444	159	21.4
Total Civil	941	28197	637	22.6
Forensic				
Norristown	188	5958	148	24.8
Torrance	74	2147	19	8.8
Total Forensic	262	8105	167	20.6
Act 21				
Act 21	61	1650	7	4.2
Total Act 21	61	1650	7	4.2
Long Term Care				
South Mountain	110	3243	63	19.4
Total L. T. C.	110	3243	63	19.4
Total	1807	41195	874	21.2

Thirteen-Month Trend of Incidents by Type of Care per 1,000 Days of Care



*Note: Rules regarding the reporting of incidents involving patient-to-patient assaults require a separate incident report form on each person involved in an altercation. This includes both the aggressor, when known and any other person involved. The numbers reported above reflect the monthly, total number of SI-815 reports coded as Patient-to-Patient Assaults and not the actual number of altercations.

The following table is refreshed each month from the most recent data (recent 6-month period) available from the State Hospital System RM database.

CATEGORY	Count	Nov_20	Dec_20	Jan_21	Feb_21	Mar_21	Apr_21
Accident-Injury	145	24	20	27	13	27	34
Adverse Drug Reaction	4		2	1	1		
Aggression	802	174	111	103	119	162	133
Airway Obstruction type 1 Intervention	16	3	6		1	2	4
Airway Obstruction type 2 No Intervention	9		1	2	1	3	2
Alleged Nonconsensual Sexual Activity	15	6	1	1	3		4
Alleged Pt. Abuse	18	2	3	3	2	3	5
Assault, Pt./Pt	1565	281	216	291	238	296	243
Assault, Pt./Staff	338	63	41	48	49	77	60
Assault: Patient/Other	2	1				1	
AWOL/UA	15	3	2	1	3	4	2
AWOL-Attempt	15	2	7	3		1	2
AWOL-Late	5	2		1		2	
Change in Medical Status-Stabilized	22	3	2	3	5	3	6
Change in Medical Status-Transferred	340	51	84	55	52	48	50
Charged post admit/crime committed prior to admit	1						1
Communications Sys. Misuse	48	6	10	9	6	8	9
Community Incident	3	1	1	1			
Contraband Possession	54	5	12	12	10	10	5
Fall Type 1-Injury with treatment	228	39	49	30	32	39	39
Fall Type 2-No treatment needed	654	106	128	120	100	98	102
Family Concern	9	1		4		1	3
Fire Setting	1					1	
Illicit Substance Use/Possession	1	1					
Indeterminate/Unconfirmed Cause of Injury	81	19	10	14	10	12	16
Medication Error	77	9	11	13	21	10	13
Missing Property	17		4	3	6	2	2
Other	223	46	55	42	25	34	21
Procedural Treatment Error	13	2	1	2	3	1	4
Property Damage	95	11	12	14	20	20	18
Seizure	59	7	11	6	9	9	17
Self-Injurious behavior	587	81	80	131	128	105	62
Sexual Behavior	21	2	2	3	5	6	3
Smoking Violation	8	5			1	1	1
Substantiated Nonconsensual Sexual Activity	1					1	
Substantiated Patient Abuse	4	1				3	
Suicide Attempt	5					1	4
Suicide threat/plan	20	3	2	2	2	6	5
Theft	11	5		2	1	2	1
Unsubstantiated Nonconsensual Sexual Activity	3		1	1		1	
Unsubstantiated Patient Abuse	13	2	1	1	2	4	3

Table 2 - Category or Cause of Incidents in the Civil Hospitals

Primary Cat #	CLA	DAN	NOR	TOR	WAR	WER	Count
Accident-Injury	1	4	1	5	1	2	14
Aggression	2	14	3	22	42	23	106
Airway Obstruction type 1 Intervention	0	3	0	0	1	0	4
Airway Obstruction type 2 No Intervention	0	1	0	0	1	0	2
Alleged Nonconsensual Sexual Activity	0	0	2	0	0	0	2
Alleged Pt. Abuse	0	0	1	0	0	0	1
Assault, Pt./Pt	12	30	30	17	33	35	157
Assault, Pt./Staff	2	12	2	3	7	5	31
AWOL/UA	1	0	0	0	0	1	2
AWOL-Attempt	0	2	0	0	0	0	2
Change in Medical Status-Stabilized	0	0	2	1	3	0	6
Change in Medical Status-Transferred	3	7	1	9	5	15	40
Charged post admit/crime committed prior to admit	1	0	0	0	0	0	1
Communications Sys. Misuse	2	1	1	0	4	1	9
Contraband Possession	1	1	0	0	1	2	5
Fall Type 1-Injury with treatment	8	3	2	11	1	6	31
Fall Type 2-No treatment needed	9	19	2	15	11	28	84
Family Concern	0	0	0	0	0	3	3
Indeterminate/Unconfirmed Cause of Injury	1	2	0	9	1	3	16
Medication Error	0	4	1	0	0	1	6
Missing Property	0	1	0	0	0	1	2
Other	0	0	1	10	0	7	18
Property Damage	0	5	5	1	3	1	15
Seizure	0	2	5	4	3	1	15
Self-Injurious behavior	4	15	1	4	11	21	56
Sexual Behavior	0	1	0	2	0	0	3
Suicide Attempt	1	0	0	1	0	0	2
Suicide threat/plan	0	0	0	0	0	2	2
Theft	0	0	0	0	0	1	1
Unsubstantiated Patient Abuse	1	0	0	0	0	0	1
Totals	49	127	60	114	128	159	637

Table 3 - Primary Effect of Incidents in the Civil Hospitals

Primary effect	CLA	DAN	NOR	TOR	WAR	WER	Count
Unknown	1	2	0	0	0	0	3
Abrasion/scrape/scratch/hematoma	10	10	8	12	3	15	58
Bite-Human	0	0	0	2	0	0	2
Blister	0	1	0	2	1	0	4
Body System Illness	1	2	0	2	1	2	8
Bruise/contusion/discoloration	4	1	3	9	2	2	21
Cellulitis	0	0	0	0	3	0	3
Concussion	0	0	0	1	0	0	1
Damaged or lost tooth	1	1	0	0	0	0	2
Edema/swelling	0	2	0	2	5	4	13
Emesis	0	0	1	0	0	2	3
Epistaxis	0	0	1	2	1	1	5
Erythema/redness	1	3	1	5	5	4	19
Fever	1	0	0	1	0	0	2
Ingestion of foreign body	1	3	0	0	5	6	15
Internal injury	0	0	0	1	0	0	1
Laceration: NO sutures/staples/steri-strips	3	1	4	3	0	2	13
Laceration: with steristrips/glue	0	0	0	0	0	1	1
Laceration: with sutures/staples	1	0	0	0	0	0	1
Lethargy	0	1	0	0	0	1	2
No Injury/NA	22	83	31	53	91	105	385
Other	1	10	0	13	1	7	32
Pain unspecified	0	0	2	0	0	0	2
Pain, Specified	1	5	4	4	7	5	26
Respiratory Distress	1	2	0	0	1	0	4
Seizure	0	0	4	0	0	1	5
Skin Irritation/Rash	0	0	0	1	0	1	2
Unconscious/Unresponsive	0	0	1	1	2	0	4
Totals	49	127	60	114	128	159	637

Table 4 - Cause of Incidents in the Forensic Units Category or Cause of Incidents in the Forensic Service by Unit

Primary Cat #	NSH										TSH					Sys	
	51A1	51A2	51B1	51B2	51C1	51C2	10D1	10D2	10E1	10E2	Total	FB3	FB4	FC1	FC2	Total	Count
Aggression			3	6			4	1	1		15		2	1	3	6	21
Alleged Nonconsensual Sexual Activity								2			2					0	2
Alleged Pt. Abuse			1	1	1		1				4					0	4
Assault, Pt./Pt	4	14	7	16	10	6	9		6	4	76	4			1	5	81
Assault, Pt./Staff			4	12	1	1	1		1	1	21		1	3	1	5	26
Change in Medical Status-Transferred	4		1		1						6		1			1	7
Fall Type 1-Injury with treatment	1	1		1							3					0	3
Fall Type 2-No treatment needed					1				1		2			2		2	4
Medication Error								2			2					0	2
Other			2								2					0	2
Property Damage			1	1						1	3					0	3
Seizure	1			1							2					0	2
Self-Injurious behavior			3	3							6					0	6
Suicide Attempt				1							1					0	1
Suicide threat/plan		1									1					0	1
Unsubstantiated Patient Abuse				2							2					0	2
Totals	10	16	22	44	14	7	15	5	9	6	148	4	4	6	5	19	167

Table 5 - Effect of Incidents in the Forensic Service by Unit

EFFECT	NSH										TSH					Sys	
	51A1	51A2	51B1	51C1	51C2	51B2	10D1	10D2	10E1	10E2	Total	FB3	FB4	FC1	FC2	Total	Count
Abrasion/scrape/scratch/hematoma	1	2	1	2	1	3	2			1	13				1	1	14
Bite-Human											0		1			1	1
Body System Illness	1										1					0	1
Bruise/contusion/discoloration	1	1	2			1					5					0	5
Damaged or lost tooth									1		1					0	1
Edema/swelling	1	1	1			1					4	2		1	3	7	
Emesis	1			1							2					0	2
Epistaxis			1								1					0	1
Erythema/redness							1				1				1	1	2
Fever	1										1					0	1
Laceration: NO sutures/staples/steri-strips				1	1						2					0	2
No Injury/NA	3	11	15	9	5	35	11	5	8	4	106	2	2	6	2	12	118
Other			2								2					0	2
Pain unspecified				1		2					3					0	3
Pain, Specified	1	1				1	1			1	5					0	5
Respiratory Distress											0		1			1	1
Seizure						1					1					0	1
Totals	10	16	22	14	7	44	15	5	9	6	148	4	4	6	5	19	167

Table 6 -Cause of Incidents in the Long Term Care Facility

Cause	3A	3B	6A	6B	Count
Accident-Injury	8	4	2	3	17
Aggression	1			2	3
Assault, Pt./Pt	5				5
Assault, Pt./Staff				3	3
Change in Medical Status-Transferred	1			2	3
Fall Type 1-Injury with treatment	1	1	1	2	5
Fall Type 2-No treatment needed	7	2	1	3	13
Medication Error	1	1	2	1	5
Other		1			1
Procedural Treatment Error			2	2	4
Smoking Violation	1				1
Suicide Attempt				1	1
Suicide threat/plan				2	2
Totals	25	9	8	21	63

Table 7 - Effect of Incidents in the Long Term Care Facility

EFFECT	3A	3B	6A	6B	Count
Abrasion/scrape/scratch/hematoma	2	1	1	1	5
Bruise/contusion/discoloration	7		1	2	10
Damaged or lost tooth	1				1
Death		1			1
Laceration: NO sutures/staples/steri-strips		1			1
Laceration: with steristrips/glue		2			2
Laceration: with sutures/staples				1	1
No Injury/NA	14	3	5	15	37
Other	1	1		1	3
Pain, Specified			1		1
Seizure				1	1
Totals	25	9	8	21	63

Act-21-Sexual Responsibility & Treatment Program at Torrance State Hospital

In July 2003, the Pennsylvania Legislature enacted Act 21 for adjudicated youth, aging out of the juvenile justice system who have a "mental abnormality" that renders them unable to control their violent sexual impulses. The Act mandates the state to provide mental health and sex-offense specific treatment to an identified population that had been adjudicated of certain sex crimes, received treatment in a juvenile program, yet remains a significant risk to sexually re-offend after reaching the age of 21, an age when oversight by the juvenile justice system typically ends. The Act requires the referral of such individuals who have committed these specific crimes to the Pennsylvania Sexual Offenders Assessment Board (SOAB) ninety days prior to their 20th birthday for purposes of determining if the individual has "serious difficulty in controlling sexually violent behavior." If so determined, a petition for a mental health hearing will be made for determination of civil commitment to the Sexual Responsibility and Treatment Program (SRTP) on the grounds of Torrance State Hospital. On July 1, 2006, the operation of this program transferred from an independent contractor to the Torrance State Hospital.

Table 8 - Cause of Incidents in the Sexual Responsibility and Treatment Program

Cause	TOR	Count
Accident-Injury	3	3
Aggression	3	3
Fall Type 2-No treatment needed	1	1
Totals	7	7

Table 9 - Effect of Incidents in the Sexual Responsibility and Treatment Program

Primary effect	TOR	Count
Abrasion/scrape/scratch/hematoma	1	1
Laceration: NO sutures/staples/steri-strips	1	1
No Injury/NA	5	5
Totals	7	7

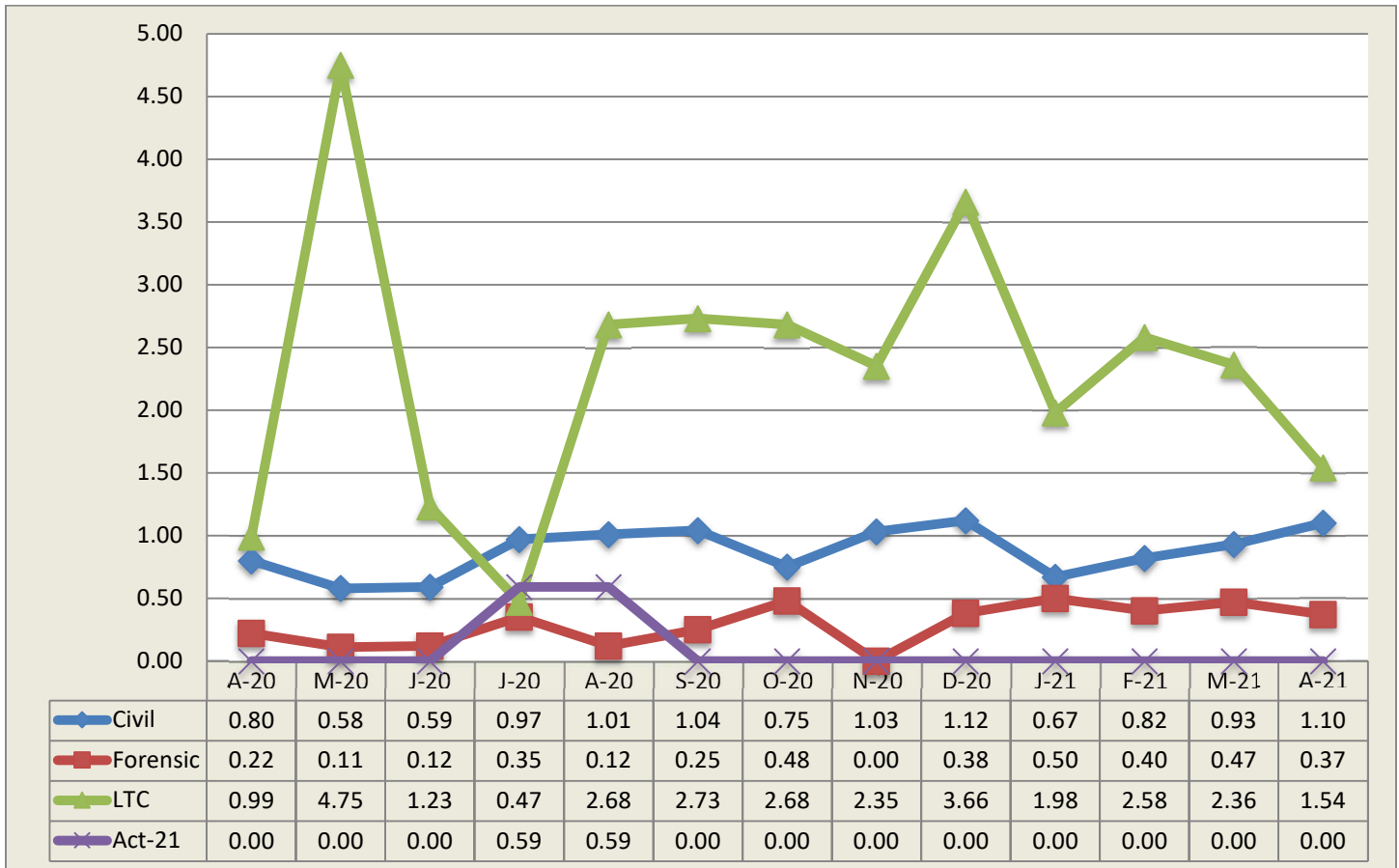
Falls

Falls within the state hospital risk management system are divided into two categories, type 1 and type 2, with the need for medical intervention or lack thereof defining the difference. The following data relates to falls, type 1 which are defined as an involuntary descent to a lower position, excluding seizures, that is witnessed or reported and requires medical intervention.

Table 10 - 13-Month Rate of Type 1 Falls Per 1,000 Days-of-Care

M/Year	Civil Hospital							Forensic			A21	LTC	Sys Avg
	Cl	Dan	Nor	Tor	War	Wer	Ttl	Nor	Tor	Total	A21	SMRC	
Apr-20	0.24	0.85	0.58	1.35	0.73	0.89	0.80	0.30	0.00	0.22	0.00	0.99	0.67
May-20	1.36	0.00	0.61	0.85	0.00	0.62	0.58	0.15	0.00	0.11	0.00	4.75	0.86
Jun-20	0.46	0.63	0.31	1.32	0.24	0.51	0.59	0.00	0.45	0.12	0.00	1.23	0.53
Jul-20	0.44	0.63	0.87	1.74	0.00	1.59	0.97	0.48	0.00	0.35	0.59	0.47	0.79
Aug-20	1.33	0.00	0.87	1.31	0.48	1.59	1.01	0.17	0.00	0.12	0.59	2.68	0.98
Sep-20	0.70	0.00	0.87	1.83	0.24	1.92	1.04	0.17	0.47	0.25	0.00	2.73	1.01
Oct-20	0.68	0.21	0.29	1.58	0.71	0.87	0.75	0.49	0.45	0.48	0.00	2.68	0.85
Nov-20	1.42	0.21	0.61	3.09	0.00	0.90	1.03	0.00	0.00	0.00	0.00	2.35	0.91
Dec-20	1.18	0.00	1.48	1.63	0.25	1.77	1.12	0.51	0.00	0.38	0.00	3.66	1.16
Jan-21	0.73	0.63	0.28	1.13	0.00	0.90	0.67	0.50	0.50	0.50	0.00	1.98	0.72
Feb-21	1.64	0.00	0.93	1.77	0.00	0.74	0.82	0.37	0.50	0.40	0.00	2.58	0.85
Mar-21	0.96	0.41	0.55	2.05	0.47	1.06	0.93	0.48	0.44	0.47	0.00	2.36	0.92
Apr-21	1.97	0.63	0.57	2.59	0.24	0.81	1.10	0.50	0.00	0.37	0.00	1.54	0.95

13-Month Trend of Type 1 Falls by Type of Care per 1,000 Days-of-Care



State Hospital Use of Seclusion

Civil and Forensic

Data on seclusion use for psychiatric reasons includes the civil and forensic populations and is reported for both monthly and yearly totals.

Table 11 - Hours of Seclusion Use, Monthly Totals for Past Year

No Use of Seclusion in PA State Hospital system since July 2013

Table 12 - Number of Seclusion Events, Monthly Totals for Past Year

No Use of Seclusion in PA State Hospital system since July 2013

State Hospital Use of Mechanical Restraint

Civil and Forensic

Data on mechanical restraint use for psychiatric reasons includes the forensic and civil populations and is reported for both monthly and yearly totals.

Table 13 - Total Hours of Mechanical Restraint Use by Hospital and Unit In Month

No use of Mechanical Restraint in PA State Hospital system since September 2015

Table 14 - Hours of Mechanical Restraint Use, Monthly Totals for Past Year

No use of Mechanical Restraint in PA State Hospital system since September 2015

Table 15 - Number of Mechanical Restraint Events, Monthly Totals for Past Year

No use of Mechanical Restraint in PA State Hospital system since September 2015

State Hospital Use of Physical Holds

Data on physical holds use for psychiatric reasons includes all level of care populations and is reported for both monthly and yearly totals. Physical hold events lasting less than 60 seconds are reflected as 0.00 hours.

Table 16 - Hours of Physical Holds (Restraint) Used by Hospital & Unit

ABV	WARD	Total	ABV	WARD	Total	ABV	WARD	Total
NOR	51B1	0.25	DAN	312	0.06	WAR	3IM	0.03
WAR	3SW	0.23	NOR	10D1	0.06	NOR	51A1	0.02
NOR	01C2	0.23	TOR	014	0.05	NOR	10D2	0.02
NOR	51C2	0.20	TOR	024	0.05	NOR	01C1	0.02
WER	35-2	0.18	WER	37-3	0.05	NOR	51C1	0.01
TOR	FC1	0.10	TOR	063	0.05	NOR	51A2	0.01
NOR	51B2	0.10	NOR	10E1	0.04	NOR	10E2	0.01

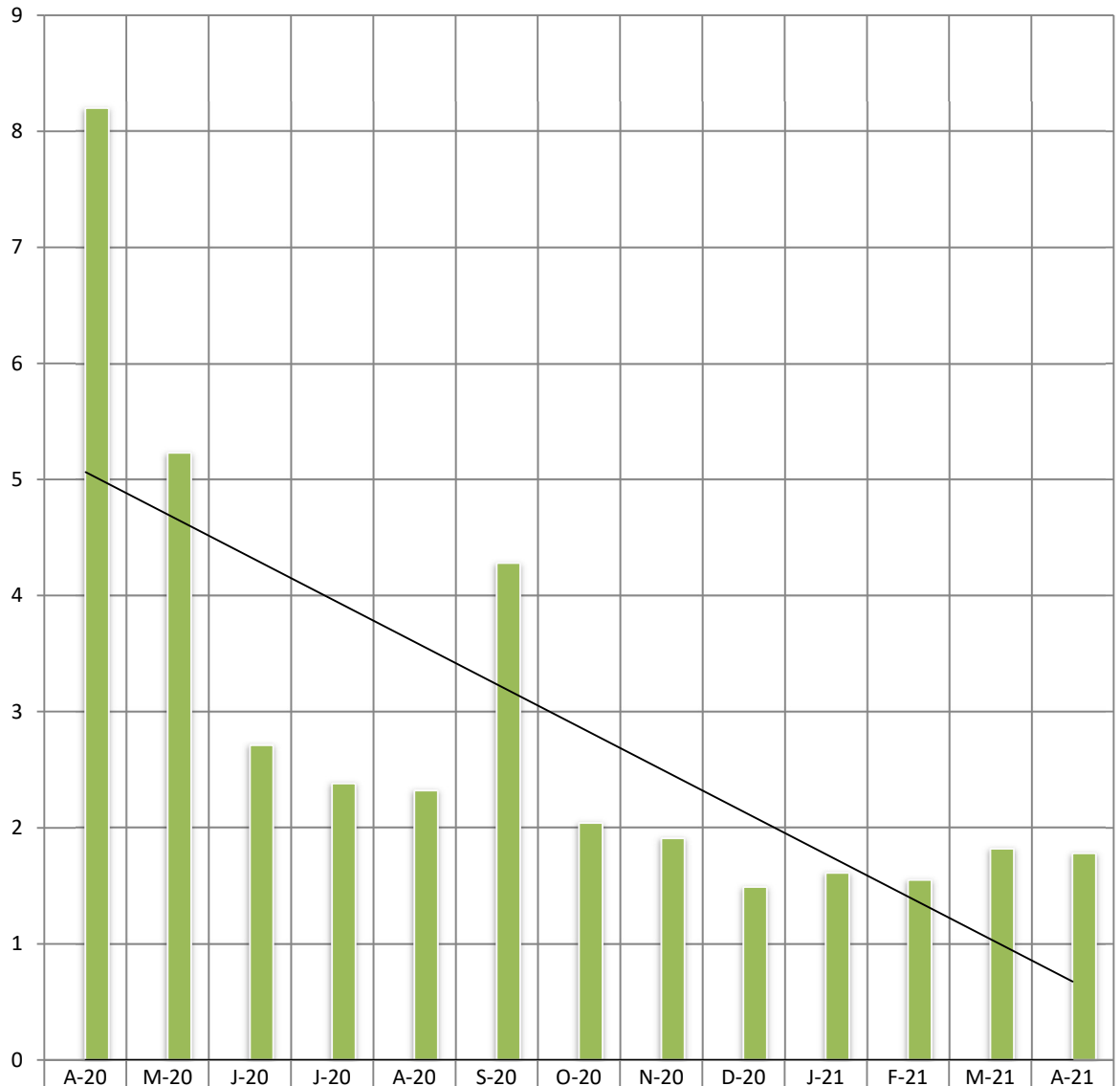
Table 17 - Hours of Physical Holds (Restraint) Use, Monthly Totals for Past Year

ABV	Total	May_20	Jun_20	Jul_20	Aug_20	Sep_20	Oct_20	Nov_20	Dec_20	Jan_21	Feb_21	Mar_21	Apr_21
CLA	2.49	1.07	0.21	0.15	0.22	0.48	0.05	0.17	0.03	0.01	0.00	0.11	0.00
DAN	4.65	0.65	0.72	0.23	0.14	0.70	0.11	0.07	0.04	1.34	0.21	0.38	0.06
NOR	6.43	0.28	0.31	0.65	0.18	0.36	0.88	0.70	0.44	0.32	0.45	0.92	0.95
TOR	6.18	0.62	0.47	1.04	0.60	0.80	0.40	0.62	0.72	0.30	0.15	0.22	0.25
WAR	13.90	2.57	2.09	1.13	0.55	0.30	0.55	0.57	0.44	1.42	3.13	0.53	0.62
WER	4.62	0.05	0.03	0.85	0.46	2.21	0.07	0.04	0.14	0.06	0.24	0.12	0.37
Total	38.26	5.24	3.83	4.05	2.14	4.84	2.05	2.16	1.81	3.45	4.18	2.27	2.24

Table 18 - Number of Physical Holds (Restraint) Events, Monthly Totals for Past Year

ABV	Total	May_20	Jun_20	Jul_20	Aug_20	Sep_20	Oct_20	Nov_20	Dec_20	Jan_21	Feb_21	Mar_21	Apr_21
CLA	61	24	4	2	8	11	1	6	1	1	0	3	0
DAN	116	18	13	9	6	17	7	4	3	20	8	9	2
NOR	287	16	18	22	17	22	32	25	13	31	18	36	37
TOR	75	8	6	11	12	9	2	5	6	4	3	4	5
WAR	197	79	29	8	13	4	14	10	9	5	13	7	6
WER	41	4	1	4	5	3	4	3	4	3	3	5	2
Total	777	149	71	56	61	66	60	53	36	64	45	64	52

Total Hours by Month



■ Mechanical Restraint	0.00	0.00	0.00	0.00	0.00	0.00	0.00	0.00	0.00	0.00	0.00	0.00	0.00
■ Physical Restraint	8.2	5.23	2.71	2.38	2.32	4.28	2.04	1.91	1.49	1.61	1.55	1.82	1.78

■ Mechanical Restraint
 ■ Physical Restraint
 — Linear (Mechanical Restraint)
 — Linear (Physical Restraint)

Assaults

Assaults within the state hospital system are defined as any aggressive act by a patient, involving physical contact that may or may not result in injury. Assaults can be directed at a peer, staff or any other individual. The system was designed to require an incident report (form SI-815) on any patient involved in a physical altercation regardless of who may have started the assault. Therefore, every patient-to-patient altercation will result in at least two incident reports.

Table 19 - Patient-to-Patient Assaults by Unit, All Levels of Care

ABV	WARD	Cnt	ABV	WARD	Cnt	ABV	WARD	Cnt
WAR	3SW	20	DAN	211	6	TOR	011	4
NOR	51B2	16	CLA	7	6	WAR	3IM	4
NOR	51A2	14	NOR	51C2	6	NOR	10E2	4
NOR	01C1	12	NOR	01C2	6	DAN	312	3
WER	37-2	11	WER	35-3	6	CLA	3	2
TOR	024	10	NOR	10E1	6	TOR	013	2
NOR	51C1	10	DAN	210	5	WER	37-3	2
NOR	10D1	9	SMO	3A	5	CLA	6	2
WAR	3NM	9	NOR	01A1	4	CLA	4	2
NOR	01A2	8	TOR	FB3	4	DAN	311	2
DAN	310	8	NOR	51A1	4	TOR	022	1
NOR	51B1	7	WER	35-4	4	TOR	FC2	1
WER	35-2	7	WER	37-1	4	WER	34-4	1
DAN	212	6						

Table 20 - Rate of Patient-to-Patient Assaults Events with Patient Injury per 1,000 Days-of-Care

Pt.-to-Pt. Assault w/ any Injury	Civil							Forensic			S RTP
	Cla	Dan	Nor	Tor	War	Wer	Tot.	Nor	Tor	Tot.	S RTP
Apr-20	0.72	1.49	6.13	0.68	2.20	1.14	1.81	2.07	0.00	1.54	0.61
May-20	0.68	0.83	3.98	0.64	2.14	1.48	1.49	2.83	0.00	2.12	0.00
Jun-20	0.46	1.69	4.34	0.66	3.83	0.63	1.66	1.27	0.91	1.18	0.00
Jul-20	0.22	1.05	3.77	1.09	1.17	1.22	1.31	1.62	2.06	1.74	0.59
Aug-20	0.89	1.03	4.65	1.09	2.63	1.35	1.75	1.52	0.87	1.34	0.00
Sep-20	0.46	2.15	4.95	2.06	0.71	0.89	1.67	2.44	0.00	1.78	0.00
Oct-20	0.23	2.09	3.43	1.13	0.24	0.75	1.19	3.79	0.45	2.90	0.00
Nov-20	1.42	1.90	4.86	1.66	1.02	0.90	1.74	5.04	0.00	3.67	0.00
Dec-20	0.00	2.25	4.13	0.93	0.76	0.50	1.25	2.91	0.00	2.13	0.00
Jan-21	0.00	3.35	4.84	1.59	1.31	1.03	1.87	3.52	1.01	2.90	0.00
Feb-21	0.27	1.14	5.56	1.77	0.82	0.74	1.52	2.94	0.50	2.29	0.00
Mar-21	0.48	1.83	5.81	2.95	0.23	1.46	1.97	3.06	0.44	2.36	0.00
Apr-21	0.99	1.25	3.68	2.35	2.18	1.07	1.77	4.03	0.93	3.21	0.00

Table 21 - Patient-to-Staff Assault Events by Unit, All Levels of Care

ABV	WARD	Cnt	ABV	WARD	Cnt	ABV	WARD	Cnt
NOR	51B2	12	WAR	3NM	2	NOR	51C2	1
DAN	310	4	NOR	01C2	2	WER	35-3	1
WER	35-2	4	NOR	10E1	1	TOR	013	1
WAR	3SW	4	NOR	10D1	1	TOR	014	1
NOR	51B1	4	DAN	212	1	TOR	024	1
DAN	211	3	CLA	7	1	TOR	FB4	1
TOR	FC1	3	DAN	311	1	TOR	FC2	1
DAN	312	3	NOR	10E2	1	WAR	2SW	1
SMO	6B	3	CLA	4	1	NOR	51C1	1

Table 22 - Rate of Patient-to-Staff Assault Events with Injury to Staff per 1,000 Days-of-Care

Pt/Staff Assault w/ Staff Inj per 1K days	Civil							Forensic			S RTP
	Cla	Dan	Nor	Tor	War	Wer	Tot.	Nor	Tor	Tot.	S RTP
Apr-20	0.00	0.00	0.29	0.00	3.67	0.51	0.70	0.74	0.43	0.66	0.00
May-20	0.68	0.00	0.00	0.00	2.38	0.00	0.44	0.15	0.00	0.11	0.00
Jun-20	0.23	0.63	0.00	0.00	2.15	0.38	0.55	0.64	0.45	0.59	0.00
Jul-20	0.44	0.21	0.29	0.00	1.17	0.37	0.40	0.81	1.65	1.04	0.00
Aug-20	0.00	0.41	0.00	0.22	0.72	0.37	0.30	0.51	0.87	0.61	0.00
Sep-20	0.00	1.07	0.29	0.91	0.24	0.26	0.45	0.17	0.00	0.13	0.00
Oct-20	0.23	1.46	0.29	0.45	0.71	1.87	0.99	0.49	0.00	0.36	0.00
Nov-20	0.00	0.42	0.30	0.47	1.02	0.13	0.36	0.17	0.93	0.38	0.00
Dec-20	0.00	0.00	0.59	0.23	0.00	0.13	0.14	0.17	1.42	0.50	0.00
Jan-21	0.00	0.00	0.28	0.45	0.52	0.26	0.25	0.34	0.00	0.25	0.00
Feb-21	0.00	0.00	0.00	0.25	0.55	0.59	0.27	0.18	0.00	0.13	0.00
Mar-21	0.72	0.20	0.28	0.00	0.00	0.27	0.24	0.97	0.44	0.83	0.00
Apr-21	0.25	0.00	0.28	0.00	0.24	0.27	0.18	0.67	0.93	0.74	0.00

Table 23 - Risk Adjusted Safety Indicators

Apr-21	Civil							Forensic					
Month	Cl	Dan	Nor	Tor	War	Wer	C. Tota	Nor	Tor	F. Total	LTC	SRTP	System
Patient Days	4052	4783	3531	4254	4133	7444	28197	5958	2147	8105	3243	1650	41195
Census	137	158	118	148	135	245	941	188	74	262	110	61	1374
Safety Indicators													
Type 1 Falls (count)	8	3	2	11	1	6	31	3	0	3	5	0	39
Num Per 1,000 Pt Days	1.97	0.63	0.57	2.59	0.24	0.81	1.10	0.50	0.00	0.37	1.54	0.00	0.95
Total Falls (count)	17	22	4	26	12	34	115	5	2	7	18	1	141
Num Per 1,000 Pt Days	4.20	4.60	1.13	6.11	2.90	4.57	4.08	0.84	0.93	0.86	5.55	0.61	3.42
PT:PT Assaults w/Injury(count)	4	6	13	10	9	8	50	24	2	26	1	0	77
Num Per 1,000 Pt Days	0.99	1.25	3.68	2.35	2.18	1.07	1.77	4.03	0.93	3.21	0.31	0.00	1.87
Total PT:PT Assault Events (count)	12	30	30	17	33	35	157	76	5	81	5	0	243
Num Per 1,000 Pt Days	2.96	6.27	8.50	4.00	7.98	4.70	5.57	12.76	2.33	9.99	1.54	0.00	5.90
PT:Staff Assaults w/Injury(count)	1	0	1	0	1	2	5	4	2	6	0	0	11
Num Per 1,000 Pt Days	0.25	0.00	0.28	0.00	0.24	0.27	0.18	0.67	0.93	0.74	0.00	0.00	0.27
Total PT:Staff Assault Events (count)	2	12	2	3	7	5	31	21	2	23	3	0	57
Num Per 1,000 Pt Days	0.49	2.51	0.57	0.71	1.69	0.67	1.10	3.52	0.93	2.84	0.93	0.00	1.38
SIB Events (count)	4	15	1	4	11	21	56	6	0	6	0	0	62
Num Per 1,000 Pt Days	0.99	3.14	0.28	0.94	2.66	2.82	1.99	1.01	0.00	0.74	0.00	0.00	1.51
Total Physical Restraint Hours	0.00	0.06	0.25	0.1	0.27	0.23	0.91	0.72	0.1	0.82		0.05	1.78
Num Per 1,000 Pt Days	0.00	0.01	0.07	0.02	0.07	0.03	0.03	0.12	0.05	0.10		0.03	0.04
Medication Measures													
Benzodiazepines	85	83	40	25	76	74	383	8	6	14		7	404
Percentage of Census	0.62	0.53	0.34	0.17	0.56	0.30	0.41	0.04	0.08	0.05		0.11	0.29
Multiple Atypicals	30	52	10	36	57	69	254	5	11	16		0	270
Percentage of Census	0.22	0.33	0.08	0.24	0.42	0.28	0.27	0.03	0.15	0.06		0.00	0.20
Typical- Atypical	30	57	47	64	28	116	342	62	37	99		0	441
Percentage of Census	0.22	0.36	0.40	0.43	0.21	0.47	0.36	0.33	0.50	0.38		0.00	0.32

Wellness Indicators

The National Association of State Mental Health Program Directors (NASMHPD) issued a report in October 2006 about mortality and morbidity in people with serious mental illness (SMI). According to Mental Health America's *Survey of People with Schizophrenia and Providers* (www.mentalhealthamerica.net), the NASMHPD report revealed that people with SMI die on average 25 years earlier than the general population. The major natural causes of death for people with SMI are heart disease, diabetes, respiratory disease and infectious disease. Many of the risk factors for these diseases are modifiable. Beginning June 2008, the state began compiling and comparing data on the number of tobacco users (Table 24) in our state hospitals.

Table 24 - Tobacco Users on Last Day of Month Civil and Long Term Care

Month	Tobacco Users	CLA	DAN	NOR	TOR	WAR	WER	Civil Total	LTC	System Total
May-20	Total Users	0	0	0	0	0	0	0	8	8
	% of Census	0%	0%	0%	0%	0%	0%	0%	6%	1%
Sep-20	Total Users	0	0	0	0	0	0	0	8	8
	% of Census	0%	0%	0%	0%	0%	0%	0%	6%	1%
Dec-20	Total Users	0	0	0	0	0	0	0	8	8
	% of Census	0%	0%	0%	0%	0%	0%	0%	6%	1%
Apr-21	Total Users	0	0	0	0	0	0	0	6	6
	% of Census	0%	0%	0%	0%	0%	0%	0%	5%	0%

Between July 2018 and December 2018 all six State Mental Hospitals became tobacco free campuses.

Table 25 - Reasons for Hospitalizations as the Result of an Incident, All Levels of Care

The Risk Management System requires that an incident report form be completed anytime a person is transported from a state hospital to an acute care hospital. This includes if the person was only seen in the emergency room, received diagnostic tests and/or was actually admitted. It does **not** include hospitalizations for a preplanned procedure, test or surgery.

Cause	CLA	DAN	NOR	TOR	WAR	WER	Count
Accident-Injury				1			1
Alleged Nonconsensual Sexual Activity			2				2
Assault, Pt./Pt			4			1	5
Change in Medical Status-Stabilized			1				1
Change in Medical Status-Transferred	3	6	6	10	5	14	44
Fall Type 1-Injury with treatment		2		2	1		5
Fall Type 2-No treatment needed				1			1
Indeterminate/Unconfirmed Cause of Injury		1					1
Seizure			2				2
Self-Injurious behavior					1	3	4
Totals	3	9	15	14	7	18	66

Medication Measures

Beginning in September 2008 the OMHSAS Bureau of Community and Hospital Operations identified the following three medication measures for inclusion in this monthly report. The table information is compiled from the QS1 pharmacy software and reflects the unique count of the number of people served at each hospital on the last day of the month for each measure.

Table 26 - Benzodiazepines

Measure Definition: *Benzodiazepines refers to the number of unique patients served at each hospital, by level-of-care, who have an active, straight order for any benzodiazepine medication on the last day of each month.*

BZD M/Y								Forensic			S RTP	Sys
	Cl a	D an	N or	T or	W ar	W er	T otal	N or	T or	C nt	T or	T otal
Jun-20	93	79	59	30	56	77	394	8	9	17	9	420
Sep-20	92	79	52	26	61	81	391	12	5	17	7	415
Dec-20	90	84	49	27	65	71	386	9	5	14	7	407
Apr-21	85	83	40	25	76	74	383	8	6	14	7	404

Table 27 - Multiple Atypicals

Measure Definition: *Multiple Atypicals refers to the number of unique patients served at each hospital, by level-of-care, who have an active, straight order for two or more atypical antipsychotic medications on the last day of each month.*

Multiple Atypicals M/Y								Forensic			S RTP	Sys
	Cl a	D an	N or	T or	W ar	W er	T otal	N or	T or	C nt	T or	T otal
Jun-20	20	43	5	36	53	64	221	11	9	20	0	241
Sep-20	28	45	5	40	50	64	232	7	10	17	0	249
Dec-20	28	44	1	37	53	67	230	9	11	20	0	250
Apr-21	30	52	10	36	57	69	254	5	11	16	0	270

Table 28 - Typical-Atypical

Measure Definition: *Typical-Atypicals refers to the number of unique patients served at each hospital, by level-of-care, who have an active, straight order for a typical and an atypical antipsychotic medication on the last day of each month.*

Typical - Atypical M/Y								Forensic			S RTP	Sys
	Cl a	D an	N or	T or	W ar	W er	T otal	N or	T or	C nt	T or	T otal
Jun-20	32	48	48	67	41	119	355	66	35	101	0	456
Sep-20	41	47	47	66	29	123	353	60	30	90	0	443
Dec-20	34	52	20	60	18	120	304	40	24	64	0	368
Apr-21	30	57	47	64	28	116	342	62	37	99	0	441

Table 29 - STAT Medication Usage – Civil

Measure Definition: STAT medication are counted as psychiatric medications that have been administered. If two STAT medications are administered, it is counted as one event. Each STAT medication event is documented by “Route of Administration” and “Requested by”. This measure includes all levels of care.

CLARKS SUMMIT (FY 2020-21)							
Month	Total Number of STATs	Route of Admin			Requested by:		
		PO	IM	PEG Tube:	Indv	MD/DO	RN
Apr-21	81	77	4	0	26	50	5

DANVILLE (FY 2020-21)							
Month	Total Number of STATs	Route of Admin			Requested by:		
		PO	IM	Peg Tube:	Indv	MD/OD	RN
Apr-21	143	24	119	0	36	8	99

NORRISTOWN - CIVIL (FY 2020-21)							
Month	Total Number of STATs	Route of Admin			Requested by:		
		PO	IM	Peg Tube:	Indv	MD/DO	RN
Apr-21	51	18	33	0	9	3	39

TORRANCE - CIVIL (FY 2020-21)							
Month	Total Number of STATs	Route of Admin			Requested by:		
		PO	IM	Peg Tube:	Indv	MD/DO	RN
Apr-21	36	15	21	0	6	5	25

WARREN (FY 2020-21)							
Month	Total Number of STATs	Route of Admin			Requested by:		
		PO	IM	Peg Tube	Indv	MD/DO	RN
Apr-21	117	55	57	5	22	27	68

WERNERSVILLE (FY 2020-21)							
Month	Total Number of STATs	Route of Admin			Requested by:		
		PO	IM	Peg Tube:	Indv	MD/DO	RN
Apr-21	102	83	19	0	46	12	44

Table 30 - STAT Medication Usage – Forensic

NORRISTOWN - FORENSIC (FY 2020-21)							
Month	Total Number of STATs	Route of Admin			Requested by:		
		PO	IM	Peg Tube/othe	Indv	MD/DO	RN
Apr-21	252	70	182	0	29	35	188

TORRANCE - FORENSIC (FY 2020-21)							
Month	Total Number of STATs	Route of Admin			Requested by:		
		PO	IM	Peg Tube:	Indv	MD/DO	RN
Apr-21	41	9	32	0	5	11	25

Table 31 - STAT Medication Usage – ACT 21 (SRTP)

TORRANCE - ACT 21 (FY 2020-21)							
Month	Total Number of STATs	Route of Admin			Requested by:		
		PO	IM	Peg Tube:	Indv	MD/DO	RN
Apr-21	2	1	1	0	1	1	0