



**pennsylvania**

DEPARTMENT OF HUMAN SERVICES  
OFFICE OF MENTAL HEALTH AND  
SUBSTANCE ABUSE SERVICES



## *Pennsylvania State Hospital Risk Management Summary and Indicator Report*

*February 2020*

Prepared by:  
Christina Sterner, M.S. CPIE  
Wernersville State Hospital  
E-Mail: [csterner@pa.gov](mailto:csterner@pa.gov)  
Contributors:  
SMH CPIEs & PI Staff  
Valerie Minnich, RPh  
July 21, 2020

## Introduction

The State Hospital Risk Management System defines an incident as any patient-related event that has the potential for, or which results in, a negative impact upon the quality of patient care or services, including injury or death of a person served in the state hospital system. Past reports can be found on the DHS website using the following link.

<http://www.dhs.pa.gov/publications/forproviders/statehospitalriskmanagementsummaryreports/>

The data dictionary for the measurement system was updated on October 1, 2008, and is available for review as attachments to OMHSAS Bulletin titled Management of Incidents: SI-815 Incident Reporting and Risk Management Policy and Procedural Change. (Available via bulletin search at <http://www.dhs.pa.gov/> .)

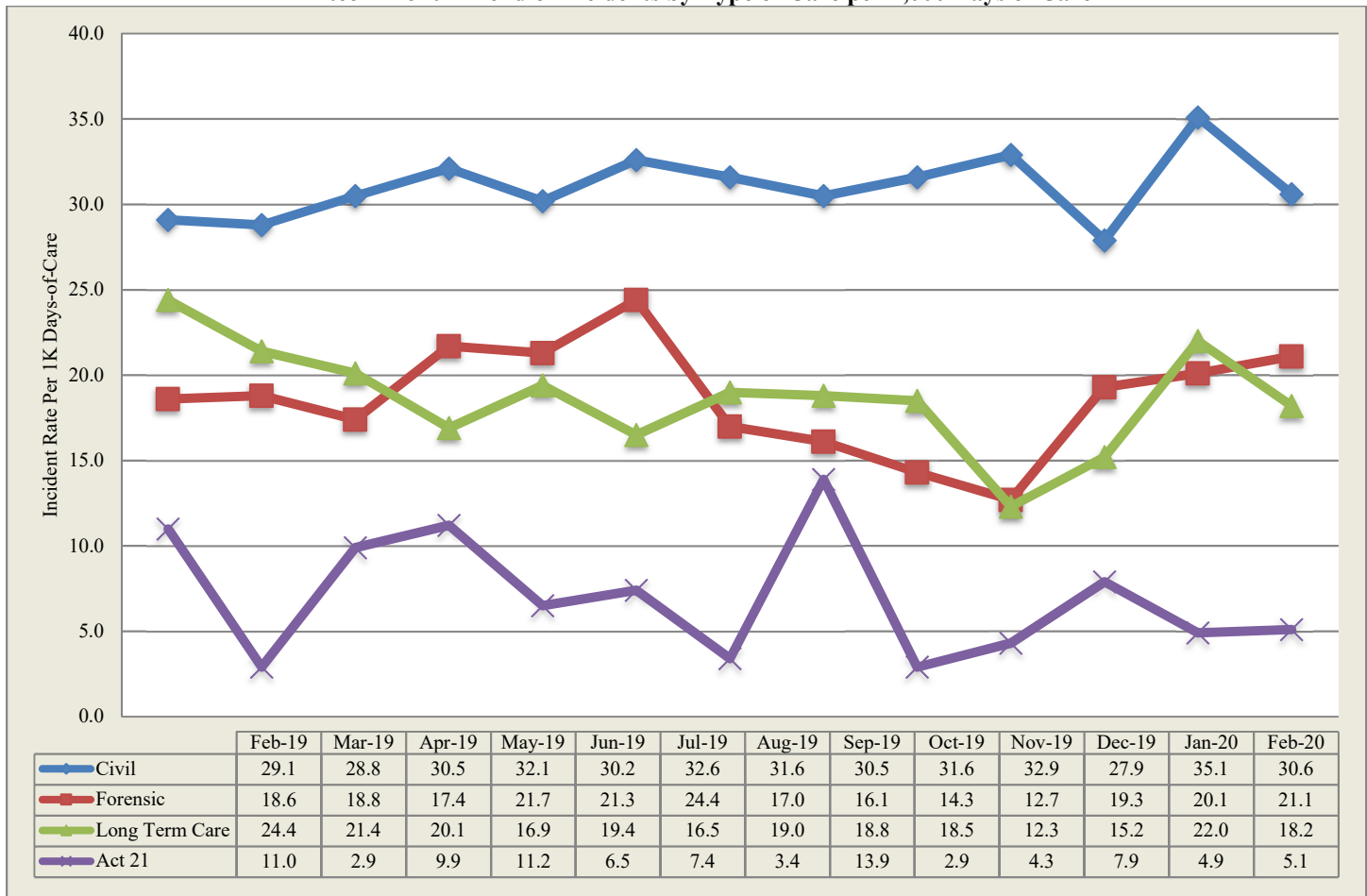
<b>Table of Contents</b>		
<b>Indicator/Measure</b>	<b>Table</b>	<b>Page</b>
<b>Risk Management Indicators</b>		
Census and Rates of Incidents	1	3
Thirteen-Month Trend of Incidents		3
Six-Month Summary of Selected Events		4
Category or Cause of Incidents: Civil	2	5
Primary Effect of Incidents: Civil	3	6
Category or Cause of Incidents: Forensic	4	7
Effect of Incidents: Forensic	5	7
Cause of Incidents: Long Term Care	6	8
Effect of Incidents: Long Term Care	7	8
Cause of Incidents: SRTP	8	9
Effect of Incidents: SRTP	9	9
13-Month Rate of Type 1 Falls per 1,000 Days of Care	10	10
13-Month Trend of Type 1 Falls		10
Hours of Seclusion Use	11	11
Number of Seclusion Events	12	11
Total Hours of Mechanical Restraint by Unit	13	11
Hours of Mechanical Restraint Use: 12 Months	14	11
Number of Mechanical Restraint Events: 12 Months	15	11
Hours of Physical Restraint Use by Unit	16	12
Hours of Physical Restraint Use: 12 Months	17	12
Number of Physical Restraint Events: 12 Months	18	12
24-Month Trend of Restraint and Seclusion Hours		13
Patient-to-Patient Assaults by Unit	19	14
13-Month Rate of Patient-to-Patient Assault Events with Injury per 1,000 Days-of-Care	20	14
Patient-to-Staff Assaults by Unit	21	15
13-Month Rate of Patient-to-Staff Assaults with Injury to Staff per 1,000 Days-of-Care	22	15
Risk Adjusted Table of Selected Safety Indicators	23	16
<b>Wellness Indicators</b>		
Tobacco Users	24	17
Reasons for Hospitalization as a Result of an Incident	25	17
<b>Medication Use Indicators</b>		
Benzodiazepines	26	18
Multiple Atypicals	27	18
Typical-Atypical	28	18
<b>STAT Medication Usage</b>		
Civil	29	19
Forensic	30	20
ACT 21 (SRTP)	31	20

During **February 2020**, a total of **1138** incident reports were completed by the state hospital system. Additional records addressing specific categories from the previous month were included on page 4 of this report. The following is a breakdown of incidents by individual facility and type of care:

**Table 1 - Number of Incident Reports**

	Census 2/29/2020	Days Provided	Incidents	Per 1000 Days-of-Care
Clarks Summit	140	4106	79	19.2
Danville	159	4611	220	47.7
Norristown	118	3416	92	26.9
Torrance	146	4018	94	23.4
Warren	134	4061	141	34.7
Wernersville	264	7564	225	29.7
<b>Total Civil</b>	961	27776	851	30.6
<b>Forensic</b>				
Norristown	232	7072	188	26.6
Torrance	84	2622	17	6.5
<b>Total Forensic</b>	316	9694	205	21.1
<b>Act 21</b>				
Act 21	60	1577	8	5.1
<b>Total Act 21</b>	60	1577	8	5.1
<b>Long Term Care</b>				
South Mountain	137	4062	74	18.2
<b>Total L. T. C.</b>	137	4062	74	18.2
<b>Total</b>	1474	43109	1138	26.4

**Thirteen-Month Trend of Incidents by Type of Care per 1,000 Days of Care**



\*Note: Rules regarding the reporting of incidents involving patient-to-patient assaults require a separate incident report form on each person involved in an altercation. This includes both the aggressor, when known and any other person involved. The numbers reported above reflect the monthly, total number of SI-815 reports coded as Patient-to-Patient Assaults and not the actual number of altercations.

The following table is refreshed each month from the most recent data (recent 6 month period) available from the State Hospital System RM database.

CATEGORY	Count	Sep_19	Oct_19	Nov_19	Dec_19	Jan_20	Feb_20
Accident-Injury	234	64	55	34	38	41	2
Adverse Drug Reaction	7	1	3	2	1		
Aggression	881	184	168	184	144	195	6
Airway Obstruction type 1 Intervention	15	3	3	1	3	5	
Airway Obstruction type 2 No	14	1	3	4	1	5	
Alcohol Use/Possession/Suspected or	1			1			
Alleged Nonconsensual Sexual Activity	2					2	
Alleged Pt. Abuse	31	9	3	2	9	8	
Assault, Pt./Pt	1567	304	343	297	287	317	19
Assault, Pt./Staff	434	78	87	95	78	91	5
Assault: Patient/Other	2			1	1		
AWOL/UA	56	5	14	12	10	15	
AWOL-Attempt	39	4	11	12	3	9	
AWOL-Late	59	19	10	11	13	6	
Change in Medical Status-Stabilized	50	12	12	6	8	10	2
Change in Medical Status-Transferred	238	46	50	48	45	48	1
Charged post admit/crime committed	4		2		1	1	
Communications Sys. Misuse	32	5	10	5	5	6	1
Community Incident	8	2	1	3	1	1	
Contraband Possession	140	26	25	28	25	35	1
Fall Type 1-Injury with treatment	193	39	37	29	45	41	2
Fall Type 2-No treatment needed	568	111	114	94	119	122	8
Family Concern	10		2	4	4		
Indeterminate/Unconfirmed Cause of	89	15	23	10	24	17	
Medication Error	96	11	14	17	20	33	1
Missing Property	21	4	3	5	2	6	1
Other	464	68	94	102	85	111	4
Patient Complaint	2				1	1	
Procedural Treatment Error	17	4	2	4	2	5	
Property Damage	63	9	13	13	13	15	
Seizure	62	14	11	11	12	14	
Self-Injurious behavior	565	105	99	110	87	156	8
Sexual Behavior	49	6	14	11	4	14	
Smoking Violation	63	9	16	16	8	14	
Suicide Attempt	7	2	1	1	1	2	
Suicide threat/plan	16	5	3	2	2	4	
Theft	7			3		4	
Unknown	3	1			1	1	
Unsubstantiated Nonconsensual Sexual	2	1	1				
Unsubstantiated Patient Abuse	4	1	1	1	1		

**Table 2 - Category or Cause of Incidents in the Civil Hospitals**

Primary Cat #	CLA	DAN	NOR	TOR	WAR	WER	Count
Accident-Injury	1	6	1	2	4	4	18
Adverse Drug Reaction	0	1	0	0	0	0	1
Aggression	18	24	8	23	32	38	143
Airway Obstruction type 1 Intervention	0	0	1	0	0	1	2
Airway Obstruction type 2 No Intervention	1	0	1	0	0	1	3
Alleged Pt. Abuse	3	1	0	0	0	0	4
Assault, Pt./Pt	15	41	60	21	23	28	188
Assault, Pt./Staff	4	21	4	7	10	14	60
AWOL/UA	0	1	0	2	1	2	6
AWOL-Attempt	0	2	0	0	0	1	3
AWOL-Late	0	2	0	1	2	1	6
Change in Medical Status-Stabilized	0	0	0	2	0	1	3
Change in Medical Status-Transferred	5	0	1	7	10	15	38
Communications Sys. Misuse	5	1	1	0	1	0	8
Community Incident	0	0	0	0	1	0	1
Contraband Possession	0	6	0	0	11	2	19
Fall Type 1-Injury with treatment	5	2	2	4	0	10	23
Fall Type 2-No treatment needed	12	35	0	4	14	39	104
Indeterminate/Unconfirmed Cause of Injury	0	1	0	6	2	6	15
Medication Error	2	6	0	0	0	0	8
Missing Property	1	0	1	0	0	2	4
Other	1	10	1	10	1	30	53
Procedural Treatment Error	2	0	0	0	0	1	3
Property Damage	0	19	2	1	0	1	23
Seizure	0	0	0	0	2	2	4
Self-Injurious behavior	3	40	6	2	19	22	92
Sexual Behavior	0	0	0	0	2	0	2
Smoking Violation	0	0	2	0	5	4	11
Suicide threat/plan	0	1	1	2	0	0	4
Unsubstantiated Nonconsensual Sexual Activity	1	0	0	0	1	0	2
Totals	79	220	92	94	141	225	851

**Table 3 - Primary Effect of Incidents in the Civil Hospitals**

Primary effect	CLA	DAN	NOR	TOR	WAR	WER	Count
Abrasion/scrape/scratch/hematoma	6	10	9	13	6	15	59
Asphyxiation	0	0	0	1	0	0	1
Bite-Human	0	2	1	0	0	1	4
Body System Illness	0	3	0	5	4	4	16
Bruise/contusion/discoloration	1	5	3	2	8	9	28
Cellulitis	0	0	0	1	0	1	2
Death	0	0	0	1	0	0	1
Edema/swelling	2	0	1	0	2	2	7
Epistaxis	0	0	1	0	0	2	3
Erythema/redness	1	3	1	3	4	2	14
Fever	1	0	0	1	0	1	3
Ingestion of foreign body	0	2	0	0	5	5	12
Knife or stab wound	1	0	0	0	0	0	1
Laceration: NO sutures/staples/steri-strips	0	5	2	1	0	3	11
Laceration: with steristrips/glue	1	0	2	3	0	3	9
Laceration: with sutures/staples	2	0	0	1	0	0	3
Lethargy	0	1	1	0	0	0	2
Muscle pull/strain/sprain	1	1	0	0	0	0	2
No Injury/NA	58	180	67	54	103	155	617
Other	0	1	2	5	1	9	18
Pain unspecified	0	1	1	0	0	0	2
Pain, Specified	2	4	1	2	5	9	23
Puncture/stab wound	0	0	0	0	1	0	1
Respiratory Distress	3	0	0	0	0	2	5
Seizure	0	0	0	0	2	0	2
Skin Irritation/Rash	0	0	0	0	0	1	1
Sunburn	0	1	0	0	0	0	1
Syncopal episode	0	0	0	1	0	0	1
Unconscious/Unresponsive	0	1	0	0	0	1	2
Totals	79	220	92	94	141	225	851

**Table 4 - Cause of Incidents in the Forensic Units Category or Cause of Incidents in the Forensic Service by Unit**

Primary Cat #	NSH											TSH					Sys
	51A1	51A2	51B1	51B2	51C1	51C2	10D1	10D2	10E1	10E2	Total	FB3	FB4	FC1	FC2	Total	Count
Adverse Drug Reaction		1									1						1
Aggression	5	2		1	2	1	3		1	2	17			1	1	2	19
Airway Obstruction type 2 No Intervention										1	1					0	1
Alleged Pt. Abuse									1		1					0	1
Assault, Pt./Pt	6	12	7	49	18	4	4	6	3	12	121	2		4	2	8	129
Assault, Pt./Staff	1	2		4	4		2	1	1	2	17			1		1	18
Change in Medical Status-Stabilized					1	2					3				1	1	4
Change in Medical Status-Transferred			1		1		1		2	1	6	1				1	7
Fall Type 1-Injury with treatment	1						1				2	2				2	4
Fall Type 2-No treatment needed				2			1				3		1			1	4
Other	1		1		1		1	1			5					0	5
Property Damage	1										1					0	1
Seizure										1	1					0	1
Self-Injurious behavior					5	1		1	1		8					0	8
Suicide Attempt											0		1			1	1
Suicide threat/plan		1									1					0	1
Totals	15	18	9	56	32	8	13	9	9	19	188	5	2	6	4	17	205

**Table 5 - Effect of Incidents in the Forensic Service by Unit**

EFFECT	NSH											TSH					Sys
	51A1	51A2	51B1	51C1	51C2	51B2	10D1	10D2	10E1	10E2	Total	FB3	FB4	FC1	FC2	Total	Count
Abrasion/scrape/scratch/hematoma	1	3		5	1	9		2	1		22				2	2	24
Bruise/contusion/dicoloration	1			1		2	1	1		1	7	1				1	8
Dislocation											0	1				1	1
Edema/swelling		1		2							3	1		1		2	5
Epistaxis					2				1		3					0	3
Erythema/redness				1		1	2				4			1		1	5
Fever									1		1					0	1
Laceration: NO sutures/staples/steri-strips			1					1		2	4					0	4
Laceration: with sutures/staples					1			1			2					0	2
No Injury/NA	13	12	6	20	3	41	9	4	5	15	128	1	2	4	1	8	136
Other		1					1				2					0	2
Pain unspecified				1		2					3					0	3
Pain, Specified		1	2	2		1					6					0	6
Seizure										1	1				1	1	2
Syncopal episode					1						1					0	1
Unconscious/Unresponsive									1		1					0	1
Visual changes											0	1				1	1
Totals	15	18	9	32	8	56	13	9	9	19	188	5	2	6	4	17	205

**Table 6 -Cause of Incidents in the Long Term Care Facility**

Cause	3A	3B	5A	6A	6B	Count
Accident-Injury	3	1	6	1	6	17
Aggression	1	3	1			5
Assault, Pt./Pt			1	1		2
Assault, Pt./Staff		1				1
Change in Medical Status-Transferred	1		2	1	2	6
Communications Sys. Misuse			1			1
Fall Type 1-Injury with treatment		5	3		1	9
Fall Type 2-No treatment needed	6	2	5		4	17
Medication Error	2		1			3
Other	1	4	1	1	2	9
Procedural Treatment Error	1				3	4
Totals	15	16	21	4	18	74

**Table 7 - Effect of Incidents in the Long Term Care Facility**

EFFECT	3A	3B	5A	6A	6B	Count
Abrasion/scrape/scratch/hematoma	3	4	3	1	4	15
Bruise/contusion/discoloration		2	6		3	11
Death		1	1	1	2	5
Edema/swelling					1	1
No Injury/NA	11	8	9	1	7	36
Respiratory Distress	1		2	1	1	5
Skin Irritation/Rash		1				1
Totals	15	16	21	4	18	74



**Act-21-Sexual Responsibility & Treatment Program at Torrance State Hospital**

In July 2003, the Pennsylvania Legislature enacted Act 21 for adjudicated youth, aging out of the juvenile justice system who have a "mental abnormality" that renders them unable to control their violent sexual impulses. The Act mandates the state to provide mental health and sex-offense specific treatment to an identified population that had been adjudicated of certain sex crimes, received treatment in a juvenile program, yet remains a significant risk to sexually re-offend after reaching the age of 21, an age when oversight by the juvenile justice system typically ends. The Act requires the referral of such individuals who have committed these specific crimes to the Pennsylvania Sexual Offenders Assessment Board (SOAB) ninety days prior to their 20th birthday for purposes of determining if the individual has "serious difficulty in controlling sexually violent behavior." If so determined, a petition for a mental health hearing will be made for determination of civil commitment to the Sexual Responsibility and Treatment Program (SRTP) on the grounds of Torrance State Hospital. On July 1, 2006, the operation of this program transferred from an independent contractor to the Torrance State Hospital.

**Table 8 - Cause of Incidents in the Sexual Responsibility and Treatment Program**

Cause	TOR	Count
Accident-Injury	3	3
Aggression	1	1
Seizure	3	3
Self-Injurious behavior	1	1
Totals	8	8

**Table 9 - Effect of Incidents in the Sexual Responsibility and Treatment Program**

Primary effect	TOR	Count
Abrasion/scrape/scratch/hematoma	1	1
Erythema/redness	1	1
Muscle pull/strain/sprain	1	1
Other	1	1
Pain, Specified	1	1
Seizure	2	2
Unconscious/Unresponsive	1	1
Totals	8	8

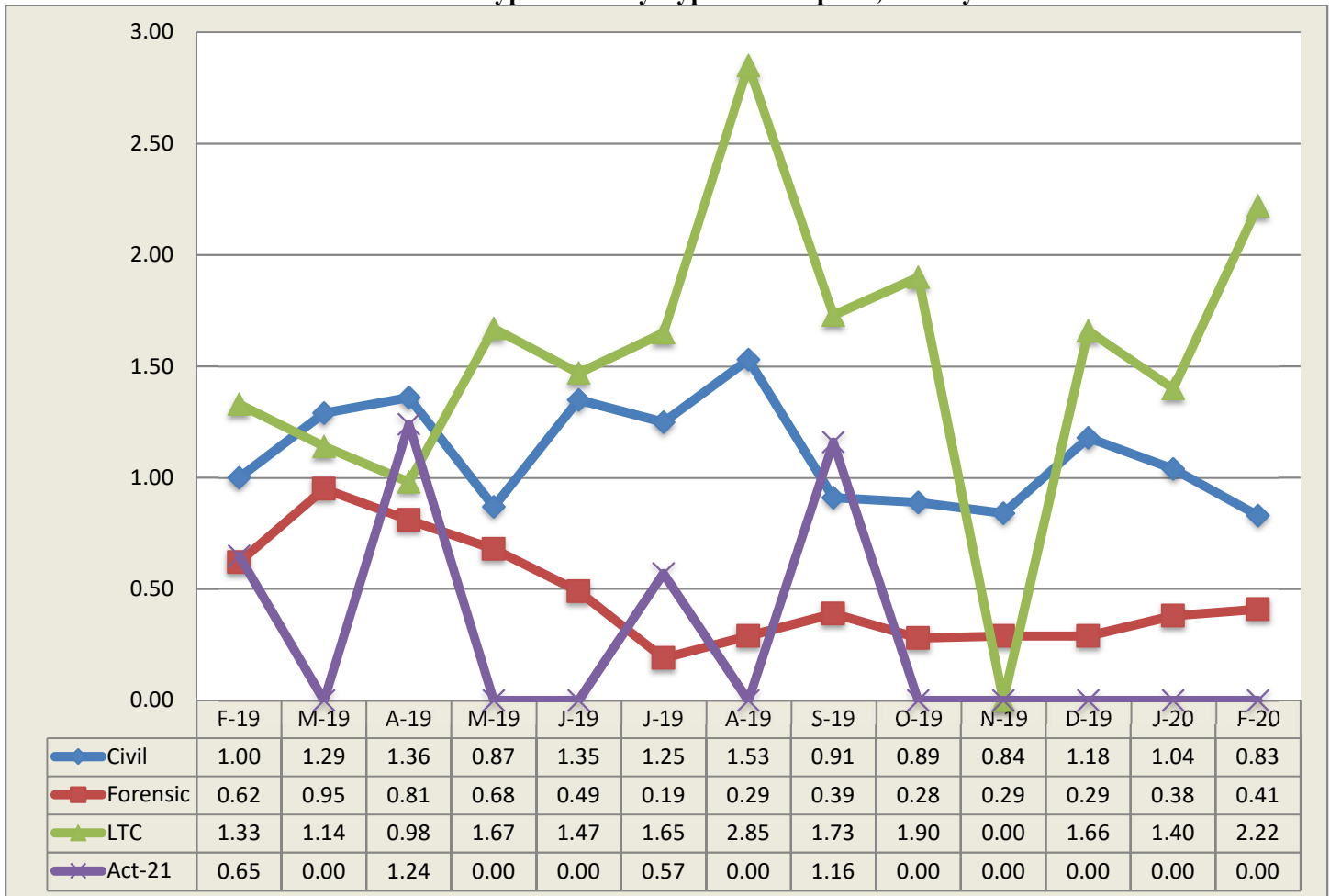
**Falls**

Falls within the state hospital risk management system are divided into two categories, type 1 and type 2, with the need for medical intervention or lack thereof defining the difference. The following data relates to falls, type 1 which are defined as an involuntary descent to a lower position, excluding seizures, that is witnessed or reported and requires medical intervention.

**Table 10 - 13-Month Rate of Type 1 Falls Per 1,000 Days-of-Care**

M/Year	Civil Hospital							Forensic			A21	LTC	Sys Avg
	Cl	Dan	Nor	Tor	War	Wer	Ttl	Nor	Tor	Total	A21	SMRC	
Feb-19	1.35	0.00	1.76	2.19	0.46	0.73	1.00	0.92	0.00	0.62	0.65	1.33	0.94
Mar-19	1.85	1.22	1.60	1.13	0.66	1.30	1.29	1.22	0.34	0.95	0.00	1.14	1.15
Apr-19	1.95	0.42	1.31	2.31	1.39	1.06	1.36	0.58	1.36	0.81	1.24	0.98	1.20
May-19	1.67	0.20	0.92	0.67	0.91	0.88	0.87	0.68	0.66	0.68	0.00	1.67	0.87
Jun-19	2.17	0.42	2.18	2.06	1.19	0.78	1.35	0.28	1.02	0.49	0.00	1.47	1.12
Jul-19	1.28	0.62	1.20	1.10	0.46	2.15	1.25	0.27	0.00	0.19	0.57	1.65	1.02
Aug-19	1.32	0.82	0.90	2.71	0.00	2.53	1.53	0.27	0.33	0.29	0.00	2.85	1.31
Sep-19	0.69	0.42	0.60	1.17	0.00	1.84	0.91	0.42	0.33	0.39	1.16	1.73	0.88
Oct-19	0.90	0.41	0.55	1.67	0.23	1.28	0.89	0.26	0.32	0.28	0.00	1.90	0.80
Nov-19	1.41	0.63	0.56	1.49	0.71	0.51	0.84	0.27	0.37	0.29	0.00	0.00	0.61
Dec-19	0.45	0.41	0.83	2.91	1.36	1.24	1.18	0.39	0.00	0.29	0.00	1.66	0.98
Jan-20	0.68	0.20	0.55	2.83	0.23	1.49	1.04	0.40	0.35	0.38	0.00	1.40	0.89
Feb-20	1.22	0.43	0.59	1.00	0.00	1.32	0.83	0.28	0.76	0.41	0.00	2.22	0.84

**13-Month Trend of Type 1 Falls by Type of Care per 1,000 Days-of-Care**



**State Hospital Use of Seclusion**

**Civil and Forensic**

Data on seclusion use for psychiatric reasons includes the civil and forensic populations and is reported for both monthly and yearly totals.

**Table 11 - Hours of Seclusion Use, Monthly Totals for Past Year**

No Use of Seclusion in PA State Hospital system since July 2013

**Table 12 - Number of Seclusion Events, Monthly Totals for Past Year**

No Use of Seclusion in PA State Hospital system since July 2013

**State Hospital Use of Mechanical Restraint**

**Civil and Forensic**

Data on mechanical restraint use for psychiatric reasons includes the forensic and civil populations and is reported for both monthly and yearly totals.

**Table 13 - Total Hours of Mechanical Restraint Use by Hospital and Unit In Month**

No use of Mechanical Restraint in PA State Hospital system since September 2015

**Table 14 - Hours of Mechanical Restraint Use, Monthly Totals for Past Year**

No use of Mechanical Restraint in PA State Hospital system since September 2015

**Table 15 - Number of Mechanical Restraint Events, Monthly Totals for Past Year**

No use of Mechanical Restraint in PA State Hospital system since September 2015

**State Hospital Use of Physical Holds**

Data on physical holds use for psychiatric reasons includes all level of care populations and is reported for both monthly and yearly totals. Physical hold events lasting less than 60 seconds are reflected as 0.00 hours.

**Table 16 - Hours of Physical Holds (Restraint) Used by Hospital & Unit**

ABV	WARD	Total	ABV	WARD	Total	ABV	WARD	Total
WAR	3IM	0.39	NOR	51A2	0.06	WER	37-2	0.02
NOR	51C1	0.18	WAR	3SW	0.05	NOR	01C1	0.02
NOR	01C2	0.16	WAR	3NM	0.05	WER	35-2	0.02
NOR	51A1	0.14	WAR	2SW	0.05	WER	34-3	0.01
TOR	FC1	0.13	NOR	51B2	0.04	WER	34-4	0.01
NOR	10D1	0.10	CLA	2	0.03	DAN	211	0.01
TOR	063	0.08	DAN	310	0.03	WAR	3IF	0.01
NOR	01A2	0.07	WER	34-2	0.03	NOR	51C2	0.001
CLA	3	0.07	DAN	311	0.02	NOR	10E2	0.001

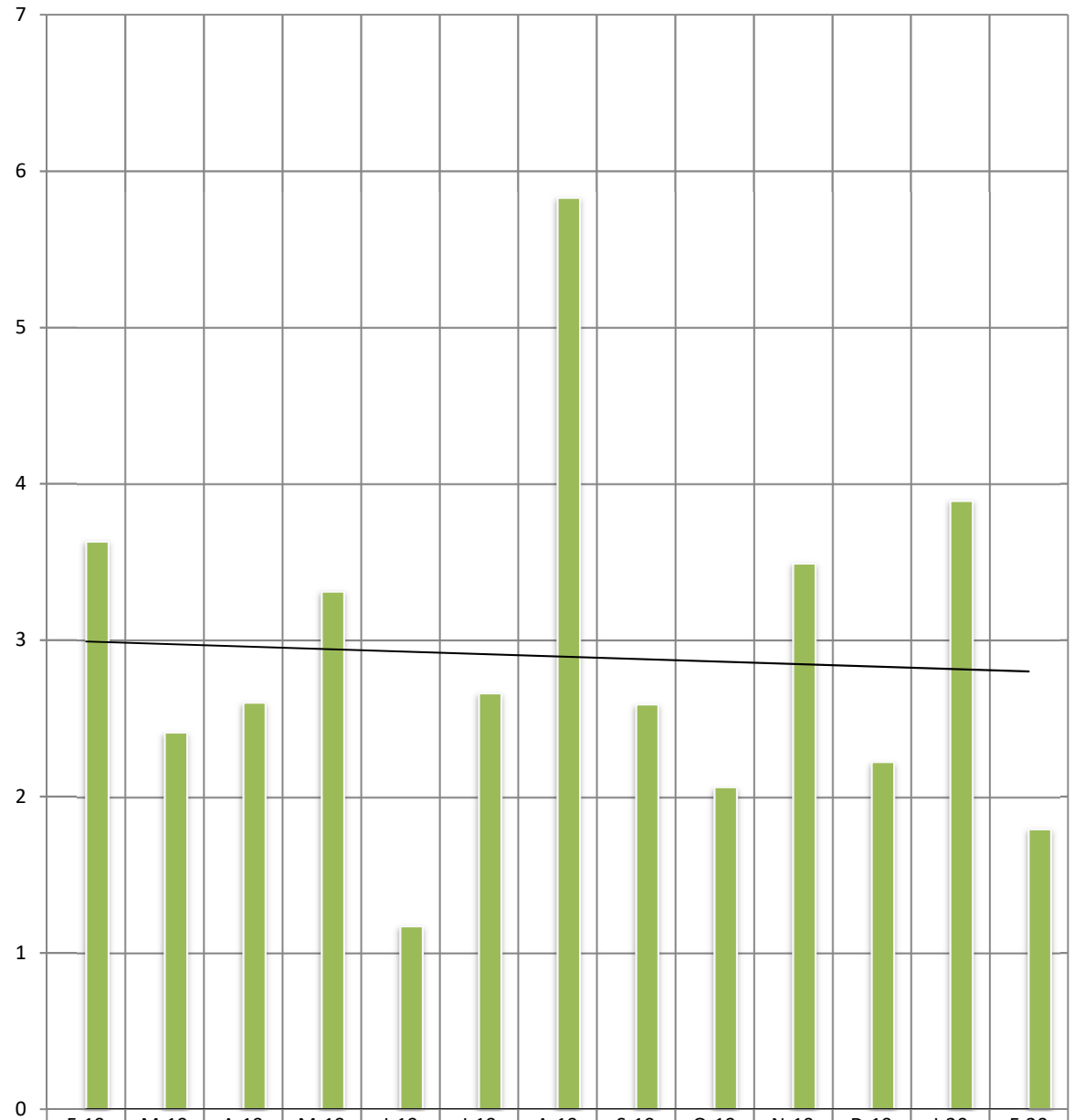
**Table 17 - Hours of Physical Holds (Restraint) Use, Monthly Totals for Past Year**

ABV	Total	Mar_19	Apr_19	May_19	Jun_19	Jul_19	Aug_19	Sep_19	Oct_19	Nov_19	Dec_19	Jan_20	Feb_20
CLA	3.67	0.51	0.46	0.13	0.14	0.63	0.17	0.13	0.63	0.14	0.54	0.03	0.15
DAN	14.19	0.39	0.08	0.18	0.53	1.99	4.94	1.34	2.16	1.36	0.38	0.79	0.06
NOR	11.74	0.54	1.36	1.23	0.95	0.99	1.00	0.72	0.96	1.77	1.03	0.40	0.79
TOR	9.90	0.93	0.92	0.72	1.45	1.10	0.63	1.07	0.73	0.10	0.62	1.42	0.22
WAR	4.20	0.00	0.00	0.35	0.00	0.00	0.00	0.00	0.00	0.20	0.13	1.56	1.96
WER	2.85	0.18	0.27	0.78	0.01	0.30	0.42	0.24	0.11	0.07	0.10	0.19	0.18
<b>Total</b>	<b>46.56</b>	<b>2.55</b>	<b>3.08</b>	<b>3.39</b>	<b>3.08</b>	<b>5.01</b>	<b>7.16</b>	<b>3.50</b>	<b>4.59</b>	<b>3.64</b>	<b>2.81</b>	<b>4.40</b>	<b>3.36</b>

**Table 18 - Number of Physical Holds (Restraint) Events, Monthly Totals for Past Year**

ABV	Total	Mar_19	Apr_19	May_19	Jun_19	Jul_19	Aug_19	Sep_19	Oct_19	Nov_19	Dec_19	Jan_20	Feb_20
CLA	56	6	9	5	3	6	3	2	8	5	5	1	3
DAN	176	10	3	5	10	14	34	21	25	18	6	26	4
NOR	530	35	42	43	47	67	62	33	37	44	36	33	51
TOR	110	8	7	8	20	9	10	9	7	2	7	20	3
WAR	34	0	0	1	0	0	0	0	0	4	3	18	8
WER	65	5	5	10	1	8	6	5	5	3	2	7	8
<b>Total</b>	<b>971</b>	<b>64</b>	<b>66</b>	<b>72</b>	<b>81</b>	<b>104</b>	<b>115</b>	<b>70</b>	<b>82</b>	<b>76</b>	<b>59</b>	<b>105</b>	<b>77</b>

Total Hours by Month



	F-19	M-19	A-19	M-19	J-19	J-19	A-19	S-19	O-19	N-19	D-19	J-20	F-20
■ Mechanical Restraint	0.00	0.00	0.00	0.00	0.00	0.00	0.00	0.00	0.00	0.00	0.00	0.00	0.00
■ Physical Restraint	3.63	2.41	2.6	3.31	1.17	2.66	5.83	2.59	2.06	3.49	2.22	3.89	1.79

■ Mechanical Restraint    
 ■ Physical Restraint    
 — Linear (Mechanical Restraint)    
 — Linear (Physical Restraint)

## Assaults

Assaults within the state hospital system are defined as any aggressive act by a patient, involving physical contact that may or may not result in injury. Assaults can be directed at a peer, staff or any other individual. The system was designed to require an incident report (form SI-815) on any patient involved in a physical altercation regardless of who may have started the assault. Therefore, every patient-to-patient altercation will result in at least two incident reports.

**Table 19 - Patient-to-Patient Assaults by Unit, All Levels of Care**

ABV	WARD	Cnt	ABV	WARD	Cnt	ABV	WARD	Cnt
NOR	51B2	49	CLA	2	6	WER	37-2	3
NOR	01A2	36	NOR	51A1	6	NOR	10E1	3
WAR	3SW	20	TOR	013	5	DAN	310	2
NOR	51C1	18	TOR	012	5	WAR	3NM	2
DAN	212	15	CLA	7	5	TOR	FC2	2
NOR	51A2	12	TOR	024	5	TOR	FB3	2
NOR	01C2	12	CLA	3	4	TOR	022	2
NOR	10E2	12	DAN	311	4	WER	37-1	1
DAN	210	10	NOR	01A1	4	WAR	3IF	1
WER	35-3	10	NOR	10D1	4	WER	34-3	1
DAN	312	9	TOR	FC1	4	DAN	211	1
NOR	01C1	8	TOR	011	4	WER	34-4	1
WER	35-4	8	WER	35-2	4	SMO	6A	1
NOR	51B1	7	NOR	51C2	4	SMO	5A	1
NOR	10D2	6						

**Table 20 - Rate of Patient-to-Patient Assaults Events with Patient Injury per 1,000 Days-of-Care**

Pt.-to-Pt. Assault w/ any Injury	Civil							Forensic			S RTP
	Cl a	D an	N or	T or	W ar	W er	T ot.	N or	T or	T ot.	S RTP
Feb-19	0.22	2.07	2.81	2.19	0.70	1.31	1.45	2.95	2.23	2.71	0.00
Mar-19	0.21	0.81	1.28	1.13	1.33	0.65	0.85	4.74	0.00	3.28	0.00
Apr-19	1.08	1.06	2.62	1.85	0.69	1.32	1.36	3.78	1.36	3.06	0.00
May-19	0.21	0.61	3.38	1.12	0.68	1.26	1.11	3.83	0.66	2.90	1.18
Jun-19	0.22	1.27	2.81	0.92	0.71	1.16	1.11	4.43	0.00	3.15	0.00
Jul-19	0.64	1.24	3.91	0.66	1.38	1.51	1.45	5.10	0.66	3.81	0.00
Aug-19	0.44	1.23	3.30	1.35	0.71	0.51	1.09	4.85	0.33	3.53	0.00
Sep-19	0.69	1.48	6.55	0.93	0.47	0.52	1.47	2.51	0.66	1.97	0.00
Oct-19	0.45	2.05	4.92	1.19	0.46	1.28	1.60	3.24	0.00	2.31	0.00
Nov-19	0.00	1.05	4.77	1.00	1.42	1.67	1.57	3.60	0.73	2.84	0.00
Dec-19	1.13	1.42	6.35	2.43	0.23	0.37	1.66	4.58	0.70	3.53	0.00
Jan-20	0.23	1.22	6.04	4.01	0.45	1.00	1.89	3.96	1.39	3.25	0.00
Feb-20	1.46	0.87	4.39	2.24	0.74	0.66	1.51	4.81	1.53	3.92	0.00

**Table 21 - Patient-to-Staff Assault Events by Unit, All Levels of Care**

ABV	WARD	Cnt	ABV	WARD	Cnt	ABV	WARD	Cnt
DAN	310	9	WER	35-3	2	CLA	2	1
WAR	3IM	6	WER	34-3	2	WER	34-4	1
DAN	210	5	CLA	6	2	WER	37-2	1
DAN	312	5	DAN	311	1	SMO	3B	1
NOR	51C1	4	DAN	212	1	TOR	014	1
NOR	51B2	4	NOR	01A1	1	TOR	024	1
WER	35-4	4	NOR	01A2	1	TOR	FC1	1
TOR	022	3	NOR	01C1	1	WAR	2NM	1
WER	34-2	3	NOR	01C2	1	WAR	2SW	1
NOR	10D1	2	CLA	3	1	WAR	3NM	1
NOR	51A2	2	WER	35-2	1	WAR	3SW	1
TOR	012	2	NOR	10D2	1	NOR	10E1	1
NOR	10E2	2	NOR	51A1	1			

**Table 22 - Rate of Patient-to-Staff Assault Events with Injury to Staff per 1,000 Days-of-Care**

Pt/Staff Assault w/ Staff Inj per 1K days	Civil							Forensic			SRT P
	Cla	Dan	Nor	Tor	War	Wer	Tot.	Nor	Tor	Tot.	SRT P
Feb-19	0.67	0.46	0.35	1.22	0.93	0.73	0.74	0.00	0.00	0.00	0.65
Mar-19	0.21	0.00	0.00	0.23	0.00	0.52	0.20	0.46	0.00	0.32	0.65
Apr-19	1.30	0.00	1.31	0.46	0.69	0.53	0.66	0.15	0.34	0.20	0.00
May-19	0.00	0.20	0.31	0.67	0.45	0.51	0.37	0.82	0.00	0.58	0.59
Jun-19	0.43	0.63	0.31	0.23	0.24	0.52	0.42	0.69	0.68	0.69	0.00
Jul-19	0.21	0.41	0.00	0.22	0.46	0.25	0.27	0.67	0.66	0.67	0.57
Aug-19	0.00	0.00	0.30	1.58	0.24	0.51	0.44	0.94	0.33	0.76	0.00
Sep-19	0.00	0.00	0.89	0.23	0.71	0.39	0.35	0.28	0.66	0.39	0.00
Oct-19	0.23	0.41	0.27	0.00	0.69	0.26	0.31	0.52	0.32	0.46	0.58
Nov-19	0.00	1.47	0.28	0.25	1.18	0.64	0.66	0.13	0.00	0.10	0.45
Dec-19	0.45	0.20	0.55	0.00	1.59	0.50	0.54	0.26	0.35	0.29	0.00
Jan-20	0.00	0.81	0.27	0.71	0.68	0.75	0.57	0.26	0.69	0.38	0.00
Feb-20	0.73	0.22	0.59	0.25	0.25	0.93	0.54	0.71	0.00	0.52	0.00

**Table 23 - Risk Adjusted Safety Indicators**

Feb-20	Civil							Forensic					
Month	Cl	Dan	Nor	Tor	War	Wer	C. Total	Nor	Tor	F. Total	LTC	SRTP	System
Patient Days	4106	4611	3416	4018	4061	7564	27776	7072	2622	9694	4062	1577	43109
Census	140	159	118	146	134	264	961	232	84	316	137	60	1474
<b>Safety Indicators</b>													
Type 1 Falls (count)	5	2	2	4	0	10	23	2	2	4	9	0	36
Num Per 1,000 Pt Days	1.22	0.43	0.59	1.00	0.00	1.32	0.83	0.28	0.76	0.41	2.22	0.00	0.84
Total Falls (count)	17	37	2	8	14	49	127	5	3	8	26	0	161
Num Per 1,000 Pt Days	4.14	8.02	0.59	1.99	3.45	6.48	4.57	0.71	1.14	0.83	6.40	0.00	3.73
PT:PT Assaults w/Injury(count)	6	4	15	9	3	5	42	34	4	38	0	0	80
Num Per 1,000 Pt Days	1.46	0.87	4.39	2.24	0.74	0.66	1.51	4.81	1.53	3.92	0.00	0.00	1.86
Total PT:PT Assault Events (count)	15	41	60	21	23	28	188	121	8	129	2	0	319
Num Per 1,000 Pt Days	3.65	8.89	17.56	5.23	5.66	3.70	6.77	17.11	3.05	13.31	0.49	0.00	7.40
PT:Staff Assaults w/Injury(count)	3	1	2	1	1	7	15	5	0	5	0	0	20
Num Per 1,000 Pt Days	0.73	0.22	0.59	0.25	0.25	0.93	0.54	0.71	0.00	0.52	0.00	0.00	0.46
Total PT:Staff Assault Events (count)	4	21	4	7	10	14	60	17	1	18	1	0	79
Num Per 1,000 Pt Days	0.97	4.55	1.17	1.74	2.46	1.85	2.16	2.40	0.38	1.86	0.25	0.00	1.83
SIB Events (count)	3	40	6	2	19	22	92	8	0	8	0	1	101
Num Per 1,000 Pt Days	0.73	8.67	1.76	0.50	4.68	2.91	3.31	1.13	0.00	0.83	0.00	0.63	2.34
Total Physical Restraint Hours	0.10	0.06	0.27	0	0.54	0.08	1.05	0.52	0.13	0.6563		0.08	1.79
Num Per 1,000 Pt Days	0.02	0.01	0.08	0.00	0.13	0.01	0.04	0.07	0.05	0.07		0.05	0.04
<b>Medication Measures</b>													
Benzodiazepines	89	82	63	27	49	75	385	6	7	13		11	409
Percentage of Census	0.64	0.52	0.53	0.18	0.37	0.28	0.40	0.03	0.08	0.04		0.18	0.28
Multiple Atypicals	13	32	5	42	47	57	196	16	9	25		0	221
Percentage of Census	0.09	0.20	0.04	0.29	0.35	0.22	0.20	0.07	0.11	0.08		0.00	0.15
Typical- Atypical	36	48	47	60	27	126	344	66	30	96		0	440
Percentage of Census	0.26	0.30	0.40	0.41	0.20	0.48	0.36	0.28	0.36	0.30		0.00	0.30



## Wellness Indicators

The National Association of State Mental Health Program Directors (NASMHPD) issued a report in October 2006 about mortality and morbidity in people with serious mental illness (SMI). According to Mental Health America's *Survey of People with Schizophrenia and Providers* ([www.mentalhealthamerica.net](http://www.mentalhealthamerica.net)), the NASMHPD report revealed that people with SMI die on average 25 years earlier than the general population. The major natural causes of death for people with SMI are heart disease, diabetes, respiratory disease and infectious disease. Many of the risk factors for these diseases are modifiable. Beginning June 2008, the state began compiling and comparing data on the number of tobacco users (Table 24) in our state hospitals.

**Table 24 - Tobacco Users on Last Day of Month Civil and Long Term Care**

Month	Tobacco Users	CLA	DAN	NOR	TOR	WAR	WER	Civil Total	LTC	System Total
Mar-19	Total Users	0	0	0	0	0	0	0	9	9
	% of Census	0%	0%	0%	0%	0%	0%	0%	6%	1%
Jul-19	Total Users	0	0	0	0	0	0	0	9	9
	% of Census	0%	0%	0%	0%	0%	0%	0%	7%	1%
Nov-19	Total Users	0	0	0	0	0	0	0	9	9
	% of Census	0%	0%	0%	0%	0%	0%	0%	7%	1%
Feb-20	Total Users	0	0	0	0	0	0	0	9	9
	% of Census	0%	0%	0%	0%	0%	0%	0%	7%	1%

**Between July 2018 and December 2018 all six State Mental Hospitals became tobacco free campuses.**

**Table 25 - Reasons for Hospitalizations as the Result of an Incident, All Levels of Care**

The Risk Management System requires that an incident report form be completed anytime a person is transported from a state hospital to an acute care hospital. This includes if the person was only seen in the emergency room, received diagnostic tests and/or was actually admitted. It does **not** include hospitalizations for a preplanned procedure, test or surgery.

Cause	CLA	DAN	NOR	TOR	WAR	WER	Count
Accident-Injury				1			1
Aggression		1					1
Assault, Pt./Pt		1			1	1	3
Assault, Pt./Staff			1				1
Change in Medical Status-Transferred	4		6	5	6	6	27
Fall Type 1-Injury with treatment				1			1
Fall Type 2-No treatment needed						1	1
Indeterminate/Unconfirmed Cause of Injury		1					1
Other		3		1			4
Seizure					1		1
Self-Injurious behavior		1	2		2		5
Totals	4	7	9	8	10	8	46

## Medication Measures

Beginning in September 2008 the OMHSAS Bureau of Community and Hospital Operations identified the following three medication measures for inclusion in this monthly report. The table information is compiled from the QS1 pharmacy software and reflects the unique count of the number of people served at each hospital on the last day of the month for each measure.

**Table 26 - Benzodiazepines**

**Measure Definition:** *Benzodiazepines refers to the number of unique patients served at each hospital, by level-of-care, who have an active, straight order for any benzodiazepine medication on the last day of each month.*

<b>BZD</b>								<b>Forensic</b>			<b>SRTP</b>	<b>Sys</b>
<b>M/Y</b>	Cl	Dan	Nor	Tor	War	Wer	Total	Nor	Tor	Cnt	Tor	Total
Apr-19	98	71	65	52	78	86	450	13	12	25	8	483
Jul-19	88	73	68	75	74	84	462	16	15	31	8	501
Oct-19	85	78	67	46	68	76	420	10	9	19	9	448
Feb-20	89	82	63	27	49	75	385	6	7	13	11	409

**Table 27 - Multiple Atypicals**

**Measure Definition:** *Multiple Atypicals refers to the number of unique patients served at each hospital, by level-of-care, who have an active, straight order for two or more atypical antipsychotic medications on the last day of each month.*

<b>Multiple Atypicals</b>								<b>Forensic</b>			<b>SRTP</b>	<b>Sys</b>
<b>M/Y</b>	Cl	Dan	Nor	Tor	War	Wer	Total	Nor	Tor	Cnt	Tor	Total
Apr-19	12	46	2	42	51	49	202	14	18	32	0	234
Jul-19	19	34	7	42	54	53	209	16	18	34	0	243
Oct-19	23	36	6	42	44	52	203	17	16	33	0	236
Feb-20	13	32	5	42	47	57	196	16	9	25	0	221

**Table 28 - Typical-Atypical**

**Measure Definition:** *Typical-Atypicals refers to the number of unique patients served at each hospital, by level-of-care, who have an active, straight order for a typical and an atypical antipsychotic medication on the last day of each month.*

<b>Typical - Atypical</b>								<b>Forensic</b>			<b>SRTP</b>	<b>Sys</b>
<b>M/Y</b>	Cl	Dan	Nor	Tor	War	Wer	Total	Nor	Tor	Cnt	Tor	Total
Apr-19	31	54	53	56	33	122	349	59	24	83	0	432
Jul-19	32	46	48	50	33	124	333	58	38	96	0	429
Oct-19	35	47	51	56	25	126	340	58	27	85	0	425
Feb-20	36	48	47	60	27	126	344	66	30	96	0	440

**Table 29 - STAT Medication Usage – Civil**

**Measure Definition:** STAT medication are counted as psychiatric medications that have been administered. If two STAT medications are administered, it is counted as one event. Each STAT medication event is documented by “Route of Administration” and “Requested by”. This measure includes all levels of care.

CLARKS SUMMIT (FY 2019-20)							
Month	Total Number of STATs	Route of Admin			Requested by:		
		PO	IM	PEG Tube:	Indv	MD/DO	RN
Feb-20	79	73	6	0	18	48	13

DANVILLE (FY 2019-20)							
Month	Total Number of STATs	Route of Admin			Requested by:		
		PO	IM	Peg Tube:	Indv	MD/OD	RN
Feb-20	242	36	206	0	92	0	150

NORRISTOWN - CIVIL (FY 2019-20)							
Month	Total Number of STATs	Route of Admin			Requested by:		
		PO	IM	Peg Tube:	Indv	MD/DO	RN
Feb-20	69	25	44	0	1	12	56

TORRANCE - CIVIL (FY 2019-20)							
Month	Total Number of STATs	Route of Admin			Requested by:		
		PO	IM	Peg Tube:	Indv	MD/DO	RN
Feb-20	87	48	39	0	14	20	53

WARREN (FY 2019-20)							
Month	Total Number of STATs	Route of Admin			Requested by:		
		PO	IM	Peg Tube	Indv	MD/DO	RN
Feb-20	64	27	35	2	17	40	7

WERNERSVILLE (FY 2019-20)							
Month	Total Number of STATs	Route of Admin			Requested by:		
		PO	IM	Peg Tube:	Indv	MD/DO	RN
Feb-20	113	84	29	0	45	36	32

**Table 30 - STAT Medication Usage – Forensic**

NORRISTOWN - FORENSIC (FY 2019-20)							
Month	Total Number of STATs	Route of Admin			Requested by:		
		PO	IM	Peg Tube/other	Indv	MD/DO	RN
Feb-20	275	79	196	0	22	50	203

TORRANCE - FORENSIC (FY 2019-20)							
Month	Total Number of STATs	Route of Admin			Requested by:		
		PO	IM	Peg Tube:	Indv	MD/DO	RN
Feb-20	76	51	25	0	25	22	29

**Table 31 - STAT Medication Usage – ACT 21 (SRTP)**

TORRANCE - ACT 21 (FY 2019-20)							
Month	Total Number of STATs	Route of Admin			Requested by:		
		PO	IM	Peg Tube:	Indv	MD/DO	RN
Feb-20	2	1	1	0	1	0	1