



pennsylvania

DEPARTMENT OF HUMAN SERVICES
OFFICE OF MENTAL HEALTH AND
SUBSTANCE ABUSE SERVICES



Pennsylvania State Hospital Risk Management Summary and Indicator Report

February 2021

Prepared by:
Christina Sterner, M.S. CPIE
Wernersville State Hospital
E-Mail: csterner@pa.gov
Contributors:
SMH CPIEs & PI Staff
Valerie Minnich, RPh
August 3, 2021

Introduction

The State Hospital Risk Management System defines an incident as any patient-related event that has the potential for, or which results in, a negative impact upon the quality of patient care or services, including injury or death of a person served in the state hospital system. Past reports can be found on the DHS website using the following link.

<http://www.dhs.pa.gov/publications/forproviders/statehospitalriskmanagementsummaryreports/>

The data dictionary for the measurement system was updated on October 1, 2008, and is available for review as attachments to OMHSAS Bulletin titled Management of Incidents: SI-815 Incident Reporting and Risk Management Policy and Procedural Change. (Available via bulletin search at <http://www.dhs.pa.gov/> .)

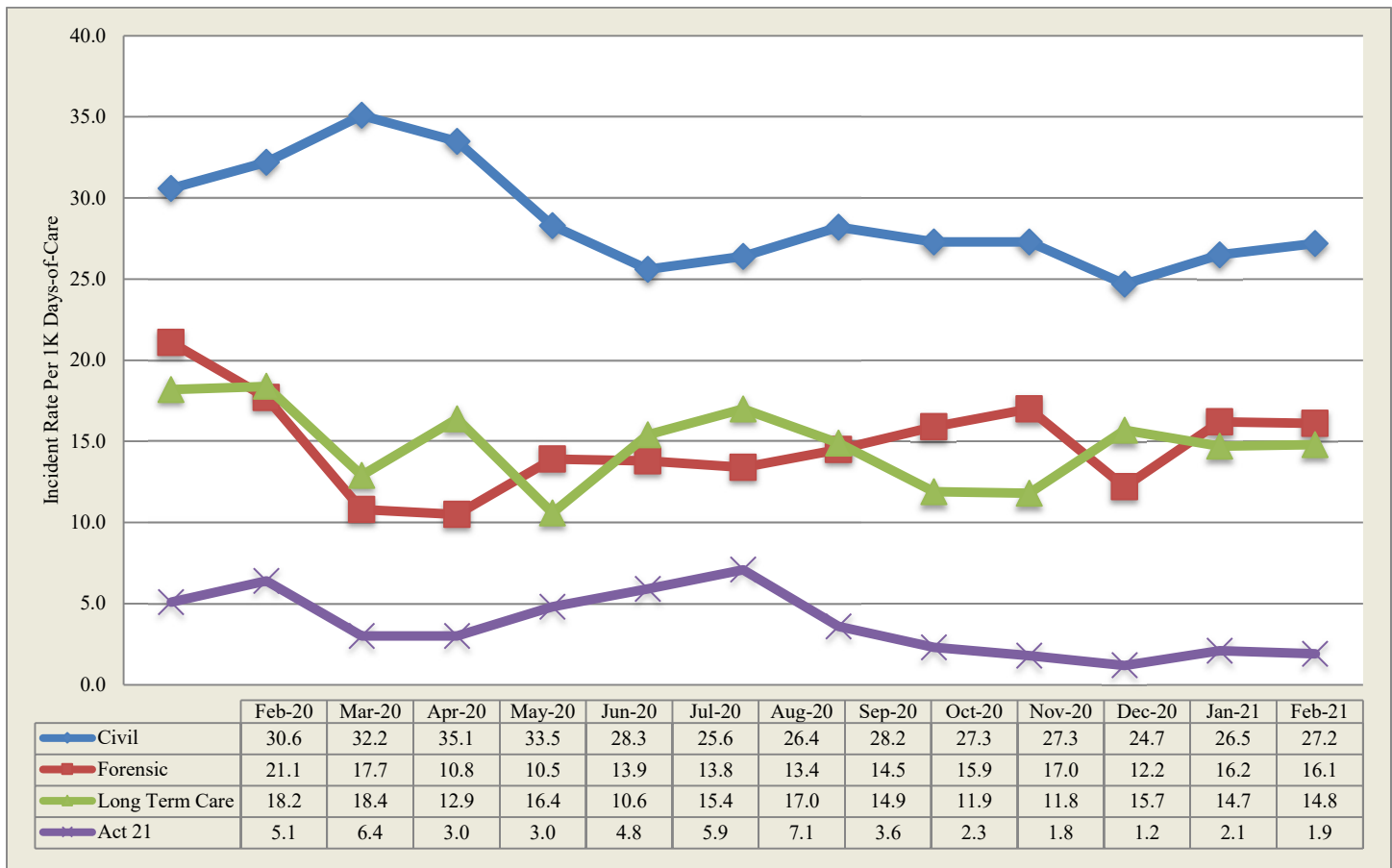
| Table of Contents | | |
|--|--------------|-------------|
| Indicator/Measure | Table | Page |
| Risk Management Indicators | | |
| Census and Rates of Incidents | 1 | 3 |
| Thirteen-Month Trend of Incidents | | 3 |
| Six-Month Summary of Selected Events | | 4 |
| Category or Cause of Incidents: Civil | 2 | 5 |
| Primary Effect of Incidents: Civil | 3 | 6 |
| Category or Cause of Incidents: Forensic | 4 | 7 |
| Effect of Incidents: Forensic | 5 | 7 |
| Cause of Incidents: Long Term Care | 6 | 8 |
| Effect of Incidents: Long Term Care | 7 | 8 |
| Cause of Incidents: SRTP | 8 | 9 |
| Effect of Incidents: SRTP | 9 | 9 |
| 13-Month Rate of Type 1 Falls per 1,000 Days of Care | 10 | 10 |
| 13-Month Trend of Type 1 Falls | | 10 |
| Hours of Seclusion Use | 11 | 11 |
| Number of Seclusion Events | 12 | 11 |
| Total Hours of Mechanical Restraint by Unit | 13 | 11 |
| Hours of Mechanical Restraint Use: 12 Months | 14 | 11 |
| Number of Mechanical Restraint Events: 12 Months | 15 | 11 |
| Hours of Physical Restraint Use by Unit | 16 | 12 |
| Hours of Physical Restraint Use: 12 Months | 17 | 12 |
| Number of Physical Restraint Events: 12 Months | 18 | 12 |
| 24-Month Trend of Restraint and Seclusion Hours | | 13 |
| Patient-to-Patient Assaults by Unit | 19 | 14 |
| 13-Month Rate of Patient-to-Patient Assault Events with Injury per 1,000 Days-of-Care | 20 | 14 |
| Patient-to-Staff Assaults by Unit | 21 | 15 |
| 13-Month Rate of Patient-to-Staff Assaults with Injury to Staff per 1,000 Days-of-Care | 22 | 15 |
| Risk Adjusted Table of Selected Safety Indicators | 23 | 16 |
| Wellness Indicators | | |
| Tobacco Users | 24 | 17 |
| Reasons for Hospitalization as a Result of an Incident | 25 | 17 |
| Medication Use Indicators | | |
| Benzodiazepines | 26 | 18 |
| Multiple Atypicals | 27 | 18 |
| Typical-Atypical | 28 | 18 |
| STAT Medication Usage | | |
| Civil | 29 | 19 |
| Forensic | 30 | 20 |
| ACT 21 (SRTP) | 31 | 20 |

During **February 2021**, a total of **868** incident reports were completed by the state hospital system. Additional records addressing specific categories from the previous month were included on page 4 of this report. The following is a breakdown of incidents by individual facility and type of care:

Table 1 - Number of Incident Reports

| | Census 2/28/2021 | Days Provided | Incidents | Per 1000 Days-of-Care |
|-----------------------|------------------|---------------|-----------|-----------------------|
| Clarks Summit | 134 | 3668 | 40 | 10.9 |
| Danville | 157 | 4404 | 221 | 50.2 |
| Norristown | 116 | 3238 | 88 | 27.2 |
| Torrance | 148 | 3957 | 100 | 25.3 |
| Warren | 135 | 3647 | 123 | 33.7 |
| Wernersville | 239 | 6777 | 127 | 18.7 |
| Total Civil | 929 | 25691 | 699 | 27.2 |
| Forensic | | | | |
| Norristown | 201 | 5433 | 96 | 17.7 |
| Torrance | 74 | 2000 | 24 | 12.0 |
| Total Forensic | 275 | 7433 | 120 | 16.1 |
| Act 21 | | | | |
| Act 21 | 61 | 1540 | 3 | 1.9 |
| Total Act 21 | 61 | 1540 | 3 | 1.9 |
| Long Term Care | | | | |
| South Mountain | 110 | 3103 | 46 | 14.8 |
| Total L. T. C. | 110 | 3103 | 46 | 14.8 |
| Total | 1821 | 37767 | 868 | 23.0 |

Thirteen-Month Trend of Incidents by Type of Care per 1,000 Days of Care



*Note: Rules regarding the reporting of incidents involving patient-to-patient assaults require a separate incident report form on each person involved in an altercation. This includes both the aggressor, when known and any other person involved. The numbers reported above reflect the monthly, total number of SI-815 reports coded as Patient-to-Patient Assaults and not the actual number of altercations.

The following table is refreshed each month from the most recent data (recent 6 month period) available from the State Hospital System RM database.

| CATEGORY | Count | Sep_20 | Oct_20 | Nov_20 | Dec_20 | Jan_21 | Feb_21 |
|---|-------|--------|--------|--------|--------|--------|--------|
| Accident-Injury | 138 | 30 | 24 | 24 | 20 | 27 | 13 |
| Adverse Drug Reaction | 4 | | | | 2 | 1 | 1 |
| Aggression | 826 | 153 | 166 | 174 | 111 | 103 | 119 |
| Airway Obstruction type 1 Intervention | 16 | 2 | 4 | 3 | 6 | | 1 |
| Airway Obstruction type 2 No Intervention | 9 | 2 | 3 | | 1 | 2 | 1 |
| Alleged Nonconsensual Sexual Activity | 18 | 7 | | 6 | 1 | 1 | 3 |
| Alleged Pt. Abuse | 14 | 2 | 2 | 2 | 3 | 3 | 2 |
| Assault, Pt./Pt | 1519 | 268 | 225 | 281 | 216 | 291 | 238 |
| Assault, Pt./Staff | 327 | 47 | 79 | 63 | 41 | 48 | 49 |
| Assault: Patient/Other | 1 | | | 1 | | | |
| AWOL/UA | 12 | 1 | 2 | 3 | 2 | 1 | 3 |
| AWOL-Attempt | 16 | 1 | 3 | 2 | 7 | 3 | |
| AWOL-Late | 6 | 1 | 2 | 2 | | 1 | |
| Change in Medical Status-Stabilized | 22 | 4 | 5 | 3 | 2 | 3 | 5 |
| Change in Medical Status-Transferred | 342 | 46 | 54 | 51 | 84 | 55 | 52 |
| Charged with alleged crime on hospital | 1 | 1 | | | | | |
| Communications Sys. Misuse | 47 | 11 | 5 | 6 | 10 | 9 | 6 |
| Community Incident | 4 | | 1 | 1 | 1 | 1 | |
| Contraband Possession | 68 | 15 | 14 | 5 | 12 | 12 | 10 |
| Fall Type 1-Injury with treatment | 230 | 43 | 37 | 39 | 49 | 30 | 32 |
| Fall Type 2-No treatment needed | 681 | 116 | 111 | 106 | 128 | 120 | 100 |
| Family Concern | 5 | | | 1 | | 4 | |
| Illicit Substance Use/Possession | 1 | | | 1 | | | |
| Indeterminate/Unconfirmed Cause of | 79 | 15 | 11 | 19 | 10 | 14 | 10 |
| Medication Error | 92 | 24 | 14 | 9 | 11 | 13 | 21 |
| Missing Property | 16 | 2 | 1 | | 4 | 3 | 6 |
| Other | 277 | 55 | 54 | 46 | 55 | 42 | 25 |
| Procedural Treatment Error | 12 | 1 | 3 | 2 | 1 | 2 | 3 |
| Property Damage | 98 | 21 | 20 | 11 | 12 | 14 | 20 |
| Seizure | 50 | 10 | 7 | 7 | 11 | 6 | 9 |
| Self-Injurious behavior | 653 | 110 | 123 | 81 | 80 | 131 | 128 |
| Sexual Behavior | 32 | 13 | 7 | 2 | 2 | 3 | 5 |
| Smoking Violation | 7 | 1 | | 5 | | | 1 |
| Substantiated Patient Abuse | 7 | 2 | 4 | 1 | | | |
| Suicide Attempt | 2 | 1 | 1 | | | | |
| Suicide threat/plan | 12 | 2 | 1 | 3 | 2 | 2 | 2 |
| Theft | 11 | 2 | 1 | 5 | | 2 | 1 |
| Unknown | 1 | 1 | | | | | |
| Unsubstantiated Nonconsensual Sexual | 4 | 1 | 1 | | 1 | 1 | |
| Unsubstantiated Patient Abuse | 13 | 4 | 3 | 2 | 1 | 1 | 2 |

Table 2 - Category or Cause of Incidents in the Civil Hospitals

| Primary Cat # | CLA | DAN | NOR | TOR | WAR | WER | Count |
|---|-----|-----|-----|-----|-----|-----|-------|
| Accident-Injury | 3 | 3 | 1 | 0 | 1 | 1 | 9 |
| Aggression | 7 | 10 | 4 | 26 | 23 | 23 | 93 |
| Airway Obstruction type 1 Intervention | 1 | 0 | 0 | 0 | 0 | 0 | 1 |
| Airway Obstruction type 2 No Intervention | 0 | 0 | 0 | 0 | 1 | 0 | 1 |
| Alleged Nonconsensual Sexual Activity | 0 | 0 | 0 | 0 | 0 | 3 | 3 |
| Alleged Pt. Abuse | 0 | 0 | 2 | 0 | 0 | 0 | 2 |
| Assault, Pt./Pt | 2 | 66 | 50 | 15 | 28 | 20 | 181 |
| Assault, Pt./Staff | 0 | 10 | 4 | 6 | 13 | 8 | 41 |
| AWOL/UA | 1 | 0 | 0 | 1 | 0 | 1 | 3 |
| Change in Medical Status-Stabilized | 0 | 0 | 1 | 0 | 2 | 0 | 3 |
| Change in Medical Status-Transferred | 4 | 8 | 1 | 5 | 10 | 15 | 43 |
| Communications Sys. Misuse | 2 | 1 | 1 | 0 | 2 | 0 | 6 |
| Contraband Possession | 0 | 4 | 2 | 1 | 1 | 0 | 8 |
| Fall Type 1-Injury with treatment | 6 | 0 | 3 | 7 | 0 | 5 | 21 |
| Fall Type 2-No treatment needed | 2 | 33 | 3 | 11 | 10 | 26 | 85 |
| Indeterminate/Unconfirmed Cause of Injury | 1 | 0 | 0 | 6 | 0 | 3 | 10 |
| Medication Error | 3 | 5 | 1 | 0 | 0 | 1 | 10 |
| Missing Property | 0 | 1 | 1 | 1 | 0 | 1 | 4 |
| Other | 0 | 9 | 1 | 7 | 0 | 3 | 20 |
| Property Damage | 0 | 11 | 4 | 2 | 0 | 2 | 19 |
| Seizure | 0 | 1 | 1 | 2 | 1 | 1 | 6 |
| Self-Injurious behavior | 7 | 58 | 7 | 9 | 31 | 9 | 121 |
| Sexual Behavior | 0 | 1 | 1 | 0 | 0 | 3 | 5 |
| Suicide threat/plan | 1 | 0 | 0 | 0 | 0 | 0 | 1 |
| Theft | 0 | 0 | 0 | 1 | 0 | 0 | 1 |
| Unsubstantiated Patient Abuse | 0 | 0 | 0 | 0 | 0 | 2 | 2 |
| Totals | 40 | 221 | 88 | 100 | 123 | 127 | 699 |

Table 3 - Primary Effect of Incidents in the Civil Hospitals

| Primary effect | CLA | DAN | NOR | TOR | WAR | WER | Count |
|---|-----|-----|-----|-----|-----|-----|-------|
| Unknown | 0 | 2 | 0 | 0 | 0 | 0 | 2 |
| Abrasion/scrape/scratch/hematoma | 5 | 15 | 15 | 15 | 8 | 6 | 64 |
| Allergic reaction | 0 | 0 | 0 | 0 | 0 | 1 | 1 |
| Bite-Human | 1 | 0 | 0 | 0 | 2 | 2 | 5 |
| Body System Illness | 2 | 3 | 0 | 0 | 3 | 0 | 8 |
| Bruise/contusion/discoloration | 2 | 3 | 9 | 7 | 0 | 8 | 29 |
| Cellulitis | 0 | 0 | 0 | 0 | 2 | 0 | 2 |
| Edema/swelling | 0 | 3 | 0 | 2 | 2 | 3 | 10 |
| Emesis | 0 | 0 | 1 | 0 | 1 | 0 | 2 |
| Epistaxis | 0 | 0 | 1 | 0 | 2 | 3 | 6 |
| Erythema/redness | 1 | 8 | 0 | 1 | 3 | 0 | 13 |
| Fever | 1 | 0 | 0 | 2 | 0 | 2 | 5 |
| Ingestion of foreign body | 0 | 7 | 0 | 0 | 2 | 3 | 12 |
| Laceration: NO sutures/staples/steri-strips | 3 | 2 | 3 | 1 | 0 | 1 | 10 |
| Laceration: with steristrips/glue | 1 | 0 | 0 | 0 | 0 | 1 | 2 |
| Laceration: with sutures/staples | 1 | 0 | 0 | 0 | 0 | 0 | 1 |
| Lethargy | 0 | 0 | 0 | 0 | 1 | 5 | 6 |
| No Injury/NA | 19 | 166 | 51 | 61 | 88 | 76 | 461 |
| Other | 0 | 6 | 0 | 9 | 3 | 6 | 24 |
| Pain unspecified | 0 | 0 | 5 | 1 | 0 | 0 | 6 |
| Pain, Specified | 3 | 5 | 2 | 0 | 6 | 6 | 22 |
| Puncture/stab wound | 1 | 0 | 0 | 0 | 0 | 0 | 1 |
| Respiratory Distress | 0 | 0 | 0 | 0 | 0 | 2 | 2 |
| Seizure | 0 | 1 | 1 | 0 | 0 | 1 | 3 |
| Skin Irritation/Rash | 0 | 0 | 0 | 1 | 0 | 0 | 1 |
| Unconscious/Unresponsive | 0 | 0 | 0 | 0 | 0 | 1 | 1 |
| Totals | 40 | 221 | 88 | 100 | 123 | 127 | 699 |

Table 4 - Cause of Incidents in the Forensic Units Category or Cause of Incidents in the Forensic Service by Unit

| Primary Cat # | NSH | | | | | | | | | | Total | TSH | | | | Total | Sys Count | |
|--------------------------------------|------|------|------|------|------|------|------|------|------|------|-------|-----|-----|-----|-----|-------|-----------|----|
| | 51A1 | 51A2 | 51B1 | 51B2 | 51C1 | 51C2 | 10D1 | 10D2 | 10E1 | 10E2 | | FB3 | FB4 | FC1 | FC2 | | | |
| Adverse Drug Reaction | 1 | | | | | | | | | | | | | | | | 0 | 1 |
| Aggression | | 1 | 1 | 3 | | | | | 2 | 2 | | | | | | | 13 | 22 |
| Assault, Pt./Pt | | 2 | 2 | 8 | 2 | | 5 | 10 | 10 | 16 | | | | | | | 2 | 57 |
| Assault, Pt./Staff | 1 | | | 1 | 1 | | 2 | | | | | | | 1 | | | 1 | 6 |
| Change in Medical Status-Stabilized | | | | 1 | | | | | | 1 | | | | | | | 0 | 2 |
| Change in Medical Status-Transferred | 1 | | | 1 | | | | | | | | | | 1 | | | 1 | 3 |
| Contraband Possession | | | | | | | | | 1 | | | | | 1 | | | 1 | 2 |
| Fall Type 1-Injury with treatment | | 1 | | | 1 | | | | | | | | | 1 | | | 1 | 3 |
| Fall Type 2-No treatment needed | 2 | 1 | | 3 | | | | 1 | | | | | | 1 | | | 2 | 9 |
| Other | | | | | 1 | 1 | | | | | | | | | | | 1 | 3 |
| Property Damage | | | | 1 | | | | | | | | | | | | | 0 | 1 |
| Seizure | 2 | | | | | | 1 | | | | | | | | | | 0 | 3 |
| Self-Injurious behavior | | | 2 | 1 | | | | | 1 | 1 | | | | | | | 2 | 7 |
| Suicide threat/plan | | | 1 | | | | | | | | | | | | | | 0 | 1 |
| Totals | 7 | 5 | 6 | 19 | 5 | 1 | 9 | 10 | 14 | 20 | 96 | 8 | 7 | 3 | 6 | 24 | 120 | |

Table 5 - Effect of Incidents in the Forensic Service by Unit

| EFFECT | NSH | | | | | | | | | | Total | TSH | | | | Total | Sys Count | |
|---|------|------|------|------|------|------|------|------|------|------|-------|-----|-----|-----|-----|-------|-----------|----|
| | 51A1 | 51A2 | 51B1 | 51C1 | 51C2 | 51B2 | 10D1 | 10D2 | 10E1 | 10E2 | | FB3 | FB4 | FC1 | FC2 | | | |
| Abrasion/scrape/scratch/hematoma | | | | | | 1 | 1 | 2 | | 1 | | | | | | | 0 | 5 |
| Bruise/contusion/discoloration | | | | | | | 1 | 1 | | | | | | | | | 0 | 2 |
| Cellulitis | 1 | | | | | | | | | | | | | | | | 0 | 1 |
| Edema/swelling | | | | | | | | | | 1 | | | | | | | 0 | 1 |
| Erythema/redness | | 1 | | | | | | | | 1 | | | 1 | | | | 2 | 4 |
| Fever | | | | | | | | | | 1 | | | | | | | 0 | 1 |
| Knife or stab wound | | | | | | | | | 1 | | | | | | | | 0 | 1 |
| Laceration: NO sutures/staples/steri-strips | | | | 1 | | 1 | | 1 | 1 | 1 | | | | | | | 0 | 5 |
| Lethargy | | | | | | 1 | | | | | | | | | | | 0 | 1 |
| No Injury/NA | 3 | 3 | 5 | 4 | | 15 | 6 | 4 | 11 | 15 | | | | | | | 19 | 85 |
| Other | | | 1 | | 1 | 1 | | | | | | | | | | | 3 | 6 |
| Pain unspecified | | | | | | | | 1 | | | | | | | | | 0 | 1 |
| Pain, Specified | | 1 | | | | | | 1 | 1 | | | | | | | | 0 | 3 |
| Seizure | 2 | | | | | | 1 | | | | | | | | | | 0 | 3 |
| Skin Irritation/Rash | 1 | | | | | | | | | | | | | | | | 0 | 1 |
| Totals | 7 | 5 | 6 | 5 | 1 | 19 | 9 | 10 | 14 | 20 | 96 | 8 | 7 | 3 | 6 | 24 | 120 | |

Table 6 -Cause of Incidents in the Long Term Care Facility

| Cause | 3A | 3B | 6A | 6B | Count |
|--------------------------------------|----|----|----|----|-------|
| Accident-Injury | | 1 | 3 | | 4 |
| Aggression | | | | 1 | 1 |
| Assault, Pt./Staff | | | 1 | 1 | 2 |
| Change in Medical Status-Transferred | | 3 | 2 | 1 | 6 |
| Fall Type 1-Injury with treatment | 3 | 2 | 2 | 1 | 8 |
| Fall Type 2-No treatment needed | 2 | | 1 | 3 | 6 |
| Medication Error | 1 | 2 | 6 | 2 | 11 |
| Missing Property | 2 | | | | 2 |
| Other | | 2 | | | 2 |
| Procedural Treatment Error | 1 | | | 2 | 3 |
| Smoking Violation | 1 | | | | 1 |
| Totals | 10 | 10 | 15 | 11 | 46 |

Table 7 - Effect of Incidents in the Long Term Care Facility

| EFFECT | 3A | 3B | 6A | 6B | Count |
|---|----|----|----|----|-------|
| Abrasion/scrape/scratch/hematoma | 1 | | 4 | | 5 |
| Blister | | 1 | | | 1 |
| Body System Illness | | | 1 | | 1 |
| Bruise/contusion/discoloration | | | 1 | | 1 |
| Burn/Scald | 1 | | | | 1 |
| Death | | 2 | | | 2 |
| Emesis | | | | 1 | 1 |
| Fracture | 1 | | | 1 | 2 |
| Laceration: NO sutures/staples/steri-strips | | 1 | | | 1 |
| Laceration: with steristrips/glue | | 1 | | | 1 |
| No Injury/NA | 6 | 2 | 8 | 9 | 25 |
| Other | | | 1 | | 1 |
| Pain, Specified | 1 | | | | 1 |
| Respiratory Distress | | 3 | | | 3 |
| Totals | 10 | 10 | 15 | 11 | 46 |

Act-21-Sexual Responsibility & Treatment Program at Torrance State Hospital

In July 2003, the Pennsylvania Legislature enacted Act 21 for adjudicated youth, aging out of the juvenile justice system who have a "mental abnormality" that renders them unable to control their violent sexual impulses. The Act mandates the state to provide mental health and sex-offense specific treatment to an identified population that had been adjudicated of certain sex crimes, received treatment in a juvenile program, yet remains a significant risk to sexually re-offend after reaching the age of 21, an age when oversight by the juvenile justice system typically ends. The Act requires the referral of such individuals who have committed these specific crimes to the Pennsylvania Sexual Offenders Assessment Board (SOAB) ninety days prior to their 20th birthday for purposes of determining if the individual has "serious difficulty in controlling sexually violent behavior." If so determined, a petition for a mental health hearing will be made for determination of civil commitment to the Sexual Responsibility and Treatment Program (SRTP) on the grounds of Torrance State Hospital. On July 1, 2006, the operation of this program transferred from an independent contractor to the Torrance State Hospital.

Table 8 - Cause of Incidents in the Sexual Responsibility and Treatment Program

| Cause | TOR | Count |
|------------|-----|-------|
| Aggression | 3 | 3 |
| Totals | 3 | 3 |

Table 9 - Effect of Incidents in the Sexual Responsibility and Treatment Program

| Primary effect | TOR | Count |
|----------------------------------|-----|-------|
| Abrasion/scrape/scratch/hematoma | 1 | 1 |
| No Injury/NA | 1 | 1 |
| Other | 1 | 1 |
| Totals | 3 | 3 |

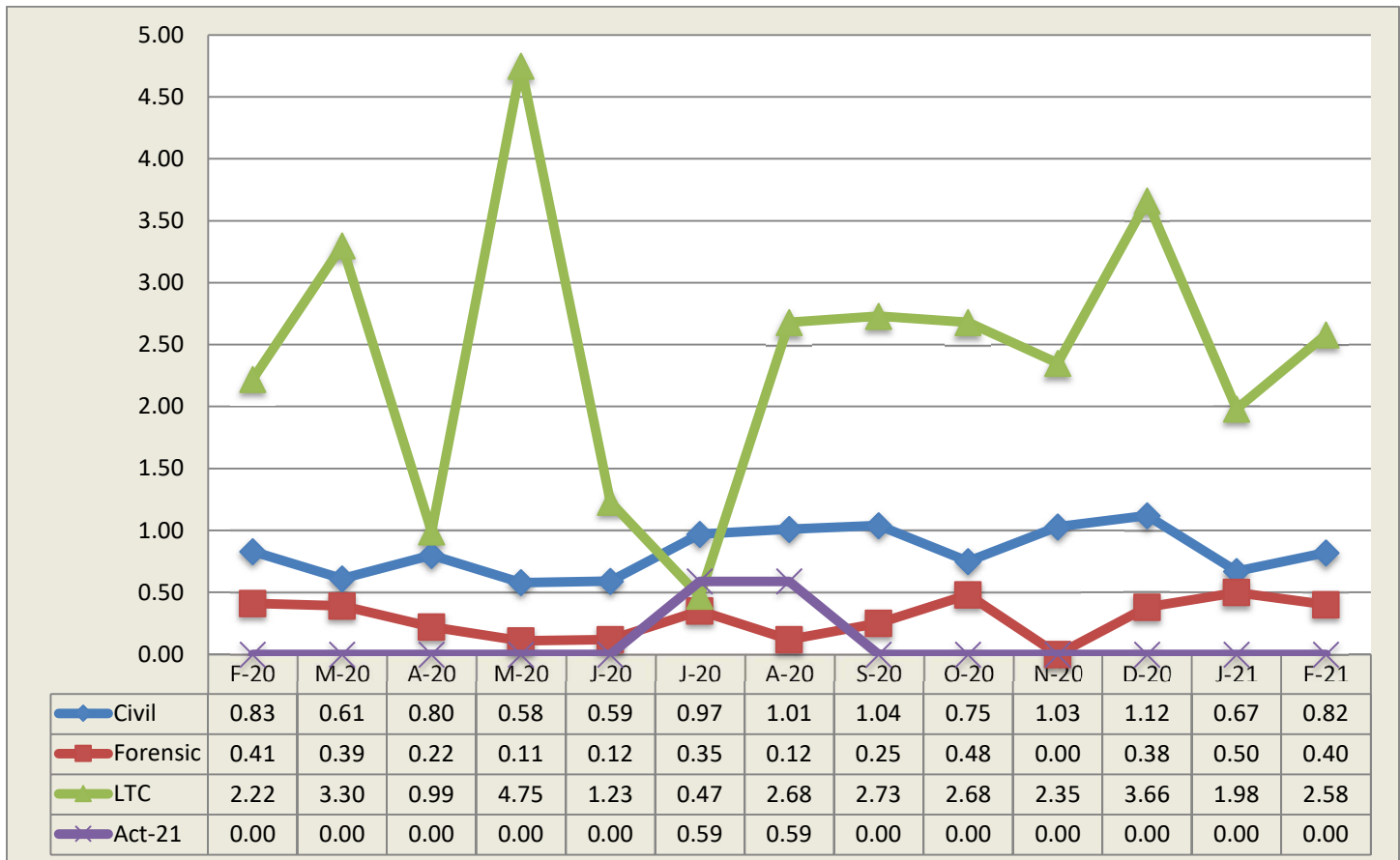
Falls

Falls within the state hospital risk management system are divided into two categories, type 1 and type 2, with the need for medical intervention or lack thereof defining the difference. The following data relates to falls, type 1 which are defined as an involuntary descent to a lower position, excluding seizures, that is witnessed or reported and requires medical intervention.

Table 10 - 13-Month Rate of Type 1 Falls Per 1,000 Days-of-Care

| M/Year | Civil Hospital | | | | | | | Forensic | | | A21 | LTC | Sys Avg |
|--------|----------------|------|------|------|------|------|------|----------|------|-------|------|------|---------|
| | Cl | Dan | Nor | Tor | War | Wer | Ttl | Nor | Tor | Total | A21 | SMRC | |
| Feb-20 | 1.22 | 0.43 | 0.59 | 1.00 | 0.00 | 1.32 | 0.83 | 0.28 | 0.76 | 0.41 | 0.00 | 2.22 | 0.84 |
| Mar-20 | 0.23 | 0.40 | 0.00 | 1.82 | 0.00 | 0.86 | 0.61 | 0.28 | 0.39 | 0.39 | 0.00 | 3.30 | 0.77 |
| Apr-20 | 0.24 | 0.85 | 0.58 | 1.35 | 0.73 | 0.89 | 0.80 | 0.30 | 0.00 | 0.22 | 0.00 | 0.99 | 0.67 |
| May-20 | 1.36 | 0.00 | 0.61 | 0.85 | 0.00 | 0.62 | 0.58 | 0.15 | 0.00 | 0.11 | 0.00 | 4.75 | 0.86 |
| Jun-20 | 0.46 | 0.63 | 0.31 | 1.32 | 0.24 | 0.51 | 0.59 | 0.00 | 0.45 | 0.12 | 0.00 | 1.23 | 0.53 |
| Jul-20 | 0.44 | 0.63 | 0.87 | 1.74 | 0.00 | 1.59 | 0.97 | 0.48 | 0.00 | 0.35 | 0.59 | 0.47 | 0.79 |
| Aug-20 | 1.33 | 0.00 | 0.87 | 1.31 | 0.48 | 1.59 | 1.01 | 0.17 | 0.00 | 0.12 | 0.59 | 2.68 | 0.98 |
| Sep-20 | 0.70 | 0.00 | 0.87 | 1.83 | 0.24 | 1.92 | 1.04 | 0.17 | 0.47 | 0.25 | 0.00 | 2.73 | 1.01 |
| Oct-20 | 0.68 | 0.21 | 0.29 | 1.58 | 0.71 | 0.87 | 0.75 | 0.49 | 0.45 | 0.48 | 0.00 | 2.68 | 0.85 |
| Nov-20 | 1.42 | 0.21 | 0.61 | 3.09 | 0.00 | 0.90 | 1.03 | 0.00 | 0.00 | 0.00 | 0.00 | 2.35 | 0.91 |
| Dec-20 | 1.18 | 0.00 | 1.48 | 1.63 | 0.25 | 1.77 | 1.12 | 0.51 | 0.00 | 0.38 | 0.00 | 3.66 | 1.16 |
| Jan-21 | 0.73 | 0.63 | 0.28 | 1.13 | 0.00 | 0.90 | 0.67 | 0.50 | 0.50 | 0.50 | 0.00 | 1.98 | 0.72 |
| Feb-21 | 1.64 | 0.00 | 0.93 | 1.77 | 0.00 | 0.74 | 0.82 | 0.37 | 0.50 | 0.40 | 0.00 | 2.58 | 0.85 |

13-Month Trend of Type 1 Falls by Type of Care per 1,000 Days-of-Care



State Hospital Use of Seclusion

Civil and Forensic

Data on seclusion use for psychiatric reasons includes the civil and forensic populations and is reported for both monthly and yearly totals.

Table 11 - Hours of Seclusion Use, Monthly Totals for Past Year

No Use of Seclusion in PA State Hospital system since July 2013

Table 12 - Number of Seclusion Events, Monthly Totals for Past Year

No Use of Seclusion in PA State Hospital system since July 2013

State Hospital Use of Mechanical Restraint

Civil and Forensic

Data on mechanical restraint use for psychiatric reasons includes the forensic and civil populations and is reported for both monthly and yearly totals.

Table 13 - Total Hours of Mechanical Restraint Use by Hospital and Unit In Month

No use of Mechanical Restraint in PA State Hospital system since September 2015

Table 14 - Hours of Mechanical Restraint Use, Monthly Totals for Past Year

No use of Mechanical Restraint in PA State Hospital system since September 2015

Table 15 - Number of Mechanical Restraint Events, Monthly Totals for Past Year

No use of Mechanical Restraint in PA State Hospital system since September 2015

State Hospital Use of Physical Holds

Data on physical holds use for psychiatric reasons includes all level of care populations and is reported for both monthly and yearly totals. Physical hold events lasting less than 60 seconds are reflected as 0.00 hours.

Table 16 - Hours of Physical Holds (Restraint) Used by Hospital & Unit

| ABV | WARD | Total |
|-----|------|-------|
| WAR | 3IF | 0.33 |
| WAR | 3SW | 0.25 |
| NOR | 01C2 | 0.17 |
| DAN | 312 | 0.14 |
| NOR | 01C1 | 0.14 |
| WER | 34-4 | 0.13 |
| NOR | 01A2 | 0.07 |

| ABV | WARD | Total |
|-----|------|-------|
| WAR | 2SW | 0.05 |
| TOR | FB4 | 0.05 |
| TOR | 064 | 0.05 |
| TOR | 024 | 0.05 |
| NOR | 51A2 | 0.03 |
| DAN | 212 | 0.02 |
| WER | 35-2 | 0.02 |

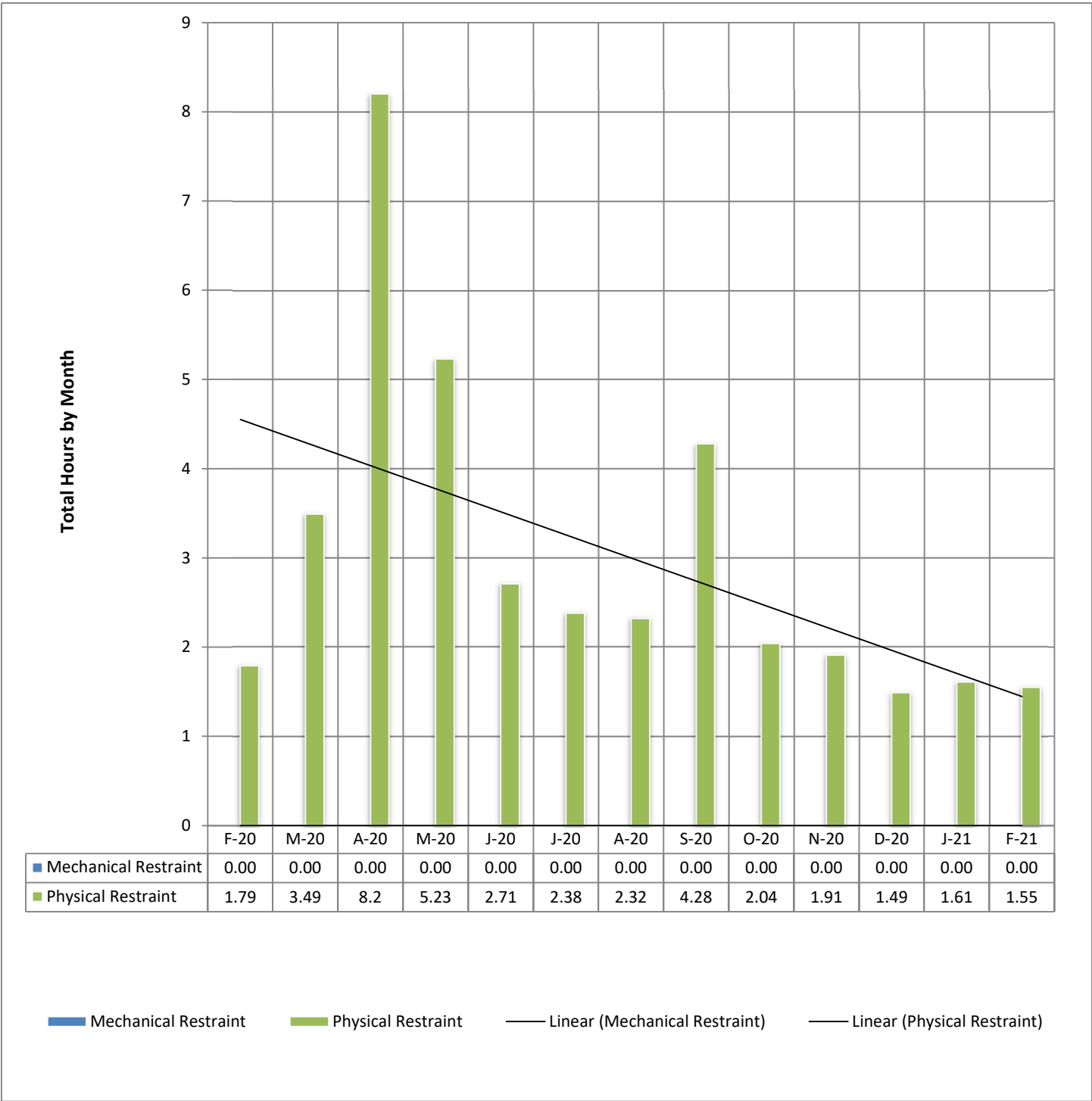
| ABV | WARD | Total |
|-----|------|-------|
| NOR | 10D1 | 0.02 |
| NOR | 51B2 | 0.01 |
| WER | 35-3 | 0.01 |
| NOR | 10E1 | 0.01 |
| NOR | 10E2 | 0.01 |
| DAN | 210 | 0.003 |
| NOR | 51B1 | 0.001 |

Table 17 - Hours of Physical Holds (Restraint) Use, Monthly Totals for Past Year

| ABV | Total | Mar_20 | Apr_20 | May_20 | Jun_20 | Jul_20 | Aug_20 | Sep_20 | Oct_20 | Nov_20 | Dec_20 | Jan_21 | Feb_21 |
|--------------|--------------|-------------|-------------|-------------|-------------|-------------|-------------|-------------|-------------|-------------|-------------|-------------|-------------|
| CLA | 13.01 | 0.03 | 0.33 | 1.07 | 0.21 | 0.15 | 0.22 | 0.48 | 0.05 | 0.17 | 0.03 | 0.01 | 0.00 |
| DAN | 5.86 | 0.86 | 0.79 | 0.65 | 0.72 | 0.23 | 0.14 | 0.70 | 0.11 | 0.07 | 0.04 | 1.34 | 0.21 |
| NOR | 5.59 | 0.64 | 0.39 | 0.28 | 0.31 | 0.65 | 0.18 | 0.36 | 0.88 | 0.70 | 0.44 | 0.32 | 0.45 |
| TOR | 7.46 | 0.90 | 0.45 | 0.62 | 0.47 | 1.04 | 0.60 | 0.80 | 0.40 | 0.62 | 0.72 | 0.30 | 0.15 |
| WAR | 41.41 | 1.35 | 6.58 | 2.57 | 2.09 | 1.13 | 0.55 | 0.30 | 0.55 | 0.57 | 0.44 | 1.42 | 3.13 |
| WER | 4.37 | 0.13 | 0.10 | 0.05 | 0.03 | 0.85 | 0.46 | 2.21 | 0.07 | 0.04 | 0.14 | 0.06 | 0.24 |
| Total | 77.69 | 3.91 | 8.64 | 5.24 | 3.83 | 4.05 | 2.14 | 4.84 | 2.05 | 2.16 | 1.81 | 3.45 | 4.18 |

Table 18 - Number of Physical Holds (Restraint) Events, Monthly Totals for Past Year

| ABV | Total | Mar_20 | Apr_20 | May_20 | Jun_20 | Jul_20 | Aug_20 | Sep_20 | Oct_20 | Nov_20 | Dec_20 | Jan_21 | Feb_21 |
|--------------|------------|------------|------------|------------|-----------|-----------|-----------|-----------|-----------|-----------|-----------|-----------|-----------|
| CLA | 68 | 3 | 7 | 24 | 4 | 2 | 8 | 11 | 1 | 6 | 1 | 1 | 0 |
| DAN | 140 | 23 | 12 | 18 | 13 | 9 | 6 | 17 | 7 | 4 | 3 | 20 | 8 |
| NOR | 286 | 44 | 28 | 16 | 18 | 22 | 17 | 22 | 32 | 25 | 13 | 31 | 18 |
| TOR | 84 | 11 | 7 | 8 | 6 | 11 | 12 | 9 | 2 | 5 | 6 | 4 | 3 |
| WAR | 254 | 18 | 52 | 79 | 29 | 8 | 13 | 4 | 14 | 10 | 9 | 5 | 13 |
| WER | 42 | 5 | 3 | 4 | 1 | 4 | 5 | 3 | 4 | 3 | 4 | 3 | 3 |
| Total | 874 | 104 | 109 | 149 | 71 | 56 | 61 | 66 | 60 | 53 | 36 | 64 | 45 |



Assaults

Assaults within the state hospital system are defined as any aggressive act by a patient, involving physical contact that may or may not result in injury. Assaults can be directed at a peer, staff or any other individual. The system was designed to require an incident report (form SI-815) on any patient involved in a physical altercation regardless of who may have started the assault. Therefore, every patient-to-patient altercation will result in at least two incident reports.

Table 19 - Patient-to-Patient Assaults by Unit, All Levels of Care

| ABV | WARD | Cnt | ABV | WARD | Cnt | ABV | WARD | Cnt |
|-----|------|-----|-----|------|-----|-----|------|-----|
| NOR | 01C1 | 28 | TOR | 014 | 6 | NOR | 51A2 | 2 |
| WAR | 3SW | 22 | DAN | 211 | 6 | CLA | 4 | 2 |
| DAN | 212 | 21 | WER | 35-4 | 6 | NOR | 51C1 | 2 |
| DAN | 312 | 19 | DAN | 210 | 6 | TOR | 011 | 2 |
| NOR | 10E2 | 16 | TOR | 013 | 5 | TOR | 024 | 2 |
| NOR | 01A2 | 16 | WER | 37-2 | 5 | TOR | FB3 | 2 |
| DAN | 310 | 12 | NOR | 10D1 | 5 | WAR | 3IF | 2 |
| NOR | 10E1 | 10 | WAR | 3NM | 3 | WER | 37-1 | 2 |
| NOR | 10D2 | 10 | WER | 34-3 | 3 | NOR | 51B1 | 2 |
| NOR | 51B2 | 8 | WER | 34-4 | 3 | WAR | 2SW | 1 |
| NOR | 01C2 | 6 | DAN | 311 | 2 | WER | 35-2 | 1 |

Table 20 - Rate of Patient-to-Patient Assaults Events with Patient Injury per 1,000 Days-of-Care

| Pt.-to-Pt. Assault w/ any Injury | Civil | | | | | | | Forensic | | | S RTP |
|----------------------------------|-------|------|------|------|------|------|-------|----------|------|-------|-------|
| | Cl a | D an | N or | T or | W ar | W er | T ot. | N or | T or | T ot. | S RTP |
| Feb-20 | 1.46 | 0.87 | 4.39 | 2.24 | 0.74 | 0.66 | 1.51 | 4.81 | 1.53 | 3.92 | 0.00 |
| Mar-20 | 0.93 | 2.63 | 3.86 | 2.50 | 1.67 | 0.86 | 1.89 | 4.37 | 0.00 | 3.20 | 0.00 |
| Apr-20 | 0.72 | 1.49 | 6.13 | 0.68 | 2.20 | 1.14 | 1.81 | 2.07 | 0.00 | 1.54 | 0.61 |
| May-20 | 0.68 | 0.83 | 3.98 | 0.64 | 2.14 | 1.48 | 1.49 | 2.83 | 0.00 | 2.12 | 0.00 |
| Jun-20 | 0.46 | 1.69 | 4.34 | 0.66 | 3.83 | 0.63 | 1.66 | 1.27 | 0.91 | 1.18 | 0.00 |
| Jul-20 | 0.22 | 1.05 | 3.77 | 1.09 | 1.17 | 1.22 | 1.31 | 1.62 | 2.06 | 1.74 | 0.59 |
| Aug-20 | 0.89 | 1.03 | 4.65 | 1.09 | 2.63 | 1.35 | 1.75 | 1.52 | 0.87 | 1.34 | 0.00 |
| Sep-20 | 0.46 | 2.15 | 4.95 | 2.06 | 0.71 | 0.89 | 1.67 | 2.44 | 0.00 | 1.78 | 0.00 |
| Oct-20 | 0.23 | 2.09 | 3.43 | 1.13 | 0.24 | 0.75 | 1.19 | 3.79 | 0.45 | 2.90 | 0.00 |
| Nov-20 | 1.42 | 1.90 | 4.86 | 1.66 | 1.02 | 0.90 | 1.74 | 5.04 | 0.00 | 3.67 | 0.00 |
| Dec-20 | 0.00 | 2.25 | 4.13 | 0.93 | 0.76 | 0.50 | 1.25 | 2.91 | 0.00 | 2.13 | 0.00 |
| Jan-21 | 0.00 | 3.35 | 4.84 | 1.59 | 1.31 | 1.03 | 1.87 | 3.52 | 1.01 | 2.90 | 0.00 |
| Feb-21 | 0.27 | 1.14 | 5.56 | 1.77 | 0.82 | 0.74 | 1.52 | 2.94 | 0.50 | 2.29 | 0.00 |

Table 21 - Patient-to-Staff Assault Events by Unit, All Levels of Care

| ABV | WARD | Cnt |
|-----|------|-----|
| DAN | 210 | 5 |
| WAR | 3SW | 4 |
| WAR | 3IF | 4 |
| WAR | 2SW | 3 |
| DAN | 311 | 3 |
| TOR | 022 | 3 |
| WER | 34-4 | 3 |
| TOR | 024 | 3 |

| ABV | WARD | Cnt |
|-----|------|-----|
| WAR | 3NM | 2 |
| DAN | 310 | 2 |
| NOR | 10D1 | 2 |
| WER | 37-1 | 2 |
| WER | 35-3 | 2 |
| NOR | 01C2 | 2 |
| NOR | 01A2 | 1 |
| NOR | 01C1 | 1 |

| ABV | WARD | Cnt |
|-----|------|-----|
| NOR | 51A1 | 1 |
| NOR | 51B2 | 1 |
| NOR | 51C1 | 1 |
| SMO | 6B | 1 |
| TOR | FC2 | 1 |
| WER | 35-2 | 1 |
| SMO | 6A | 1 |

Table 22 - Rate of Patient-to-Staff Assault Events with Injury to Staff per 1,000 Days-of-Care

| Pt/Staff Assault w/ Staff Inj per 1K days | Civil | | | | | | | Forensic | | | S RTP |
|---|-------|------|------|------|------|------|-------|----------|------|-------|-------|
| | Cl a | D an | N or | T or | W ar | W er | T ot. | N or | T or | T ot. | S RTP |
| Feb-20 | 0.73 | 0.22 | 0.59 | 0.25 | 0.25 | 0.93 | 0.54 | 0.71 | 0.00 | 0.52 | 0.00 |
| Mar-20 | 0.70 | 0.00 | 0.28 | 1.36 | 0.95 | 0.12 | 0.51 | 0.56 | 0.00 | 0.41 | 0.00 |
| Apr-20 | 0.00 | 0.00 | 0.29 | 0.00 | 3.67 | 0.51 | 0.70 | 0.74 | 0.43 | 0.66 | 0.00 |
| May-20 | 0.68 | 0.00 | 0.00 | 0.00 | 2.38 | 0.00 | 0.44 | 0.15 | 0.00 | 0.11 | 0.00 |
| Jun-20 | 0.23 | 0.63 | 0.00 | 0.00 | 2.15 | 0.38 | 0.55 | 0.64 | 0.45 | 0.59 | 0.00 |
| Jul-20 | 0.44 | 0.21 | 0.29 | 0.00 | 1.17 | 0.37 | 0.40 | 0.81 | 1.65 | 1.04 | 0.00 |
| Aug-20 | 0.00 | 0.41 | 0.00 | 0.22 | 0.72 | 0.37 | 0.30 | 0.51 | 0.87 | 0.61 | 0.00 |
| Sep-20 | 0.00 | 1.07 | 0.29 | 0.91 | 0.24 | 0.26 | 0.45 | 0.17 | 0.00 | 0.13 | 0.00 |
| Oct-20 | 0.23 | 1.46 | 0.29 | 0.45 | 0.71 | 1.87 | 0.99 | 0.49 | 0.00 | 0.36 | 0.00 |
| Nov-20 | 0.00 | 0.42 | 0.30 | 0.47 | 1.02 | 0.13 | 0.36 | 0.17 | 0.93 | 0.38 | 0.00 |
| Dec-20 | 0.00 | 0.00 | 0.59 | 0.23 | 0.00 | 0.13 | 0.14 | 0.17 | 1.42 | 0.50 | 0.00 |
| Jan-21 | 0.00 | 0.00 | 0.28 | 0.45 | 0.52 | 0.26 | 0.25 | 0.34 | 0.00 | 0.25 | 0.00 |
| Feb-21 | 0.00 | 0.00 | 0.00 | 0.25 | 0.55 | 0.59 | 0.27 | 0.18 | 0.00 | 0.13 | 0.00 |

Table 23 - Risk Adjusted Safety Indicators

| Feb-21 | Civil | | | | | | | Forensic | | | | | |
|---------------------------------------|-------|-------|-------|------|------|------|----------|----------|------|----------|------|-------|--------|
| Month | Cl | Dan | Nor | Tor | War | Wer | C. Total | Nor | Tor | F. Total | LTC | S RTP | System |
| Patient Days | 3668 | 4404 | 3238 | 3957 | 3647 | 6777 | 25691 | 5433 | 2000 | 7433 | 3103 | 1540 | 37767 |
| Census | 134 | 157 | 116 | 148 | 135 | 239 | 929 | 201 | 74 | 275 | 110 | 61 | 1375 |
| Safety Indicators | | | | | | | | | | | | | |
| Type 1 Falls (count) | 6 | 0 | 3 | 7 | 0 | 5 | 21 | 2 | 1 | 3 | 8 | 0 | 32 |
| NumPer 1,000 Pt Days | 1.64 | 0.00 | 0.93 | 1.77 | 0.00 | 0.74 | 0.82 | 0.37 | 0.50 | 0.40 | 2.58 | 0.00 | 0.85 |
| Total Falls (count) | 8 | 33 | 6 | 18 | 10 | 31 | 106 | 9 | 3 | 12 | 14 | 0 | 132 |
| NumPer 1,000 Pt Days | 2.18 | 7.49 | 1.85 | 4.55 | 2.74 | 4.57 | 4.13 | 1.66 | 1.50 | 1.61 | 4.51 | 0.00 | 3.50 |
| | | | | | | | | | | | | | |
| PT:PT Assaults w/Injury(count) | 1 | 5 | 18 | 7 | 3 | 5 | 39 | 16 | 1 | 17 | 0 | 0 | 56 |
| NumPer 1,000 Pt Days | 0.27 | 1.14 | 5.56 | 1.77 | 0.82 | 0.74 | 1.52 | 2.94 | 0.50 | 2.29 | 0.00 | 0.00 | 1.48 |
| Total PT:PT Assault Events (count) | 2 | 66 | 50 | 15 | 28 | 20 | 181 | 55 | 2 | 57 | 0 | 0 | 238 |
| NumPer 1,000 Pt Days | 0.55 | 14.99 | 15.44 | 3.79 | 7.68 | 2.95 | 7.05 | 10.12 | 1.00 | 7.67 | 0.00 | 0.00 | 6.30 |
| | | | | | | | | | | | | | |
| PT:Staff Assaults w/Injury(count) | 0 | 0 | 0 | 1 | 2 | 4 | 7 | 1 | 0 | 1 | 0 | 0 | 8 |
| NumPer 1,000 Pt Days | 0.00 | 0.00 | 0.00 | 0.25 | 0.55 | 0.59 | 0.27 | 0.18 | 0.00 | 0.13 | 0.00 | 0.00 | 0.21 |
| Total PT:Staff Assault Events (count) | 0 | 10 | 4 | 6 | 13 | 8 | 41 | 5 | 1 | 6 | 2 | 0 | 49 |
| NumPer 1,000 Pt Days | 0.00 | 2.27 | 1.24 | 1.52 | 3.56 | 1.18 | 1.60 | 0.92 | 0.50 | 0.81 | 0.64 | 0.00 | 1.30 |
| | | | | | | | | | | | | | |
| SIB Events (count) | 7 | 58 | 7 | 9 | 31 | 9 | 121 | 5 | 2 | 7 | 0 | 0 | 128 |
| NumPer 1,000 Pt Days | 1.91 | 13.17 | 2.16 | 2.27 | 8.50 | 1.33 | 4.71 | 0.92 | 1.00 | 0.94 | 0.00 | 0.00 | 3.39 |
| | | | | | | | | | | | | | |
| Total Physical Restraint Hours | 0.00 | 0.16 | 0.38 | 0.05 | 0.63 | 0.16 | 1.38 | 0.07 | 0.05 | 0.123 | | 0.05 | 1.55 |
| NumPer 1,000 Pt Days | 0.00 | 0.04 | 0.12 | 0.01 | 0.17 | 0.02 | 0.05 | 0.01 | 0.03 | 0.02 | | 0.03 | 0.04 |
| Medication Measures | | | | | | | | | | | | | |
| Benzodiazepines | 85 | 86 | 48 | 24 | 67 | 66 | 376 | 6 | 6 | 12 | | 7 | 395 |
| Percentage of Census | 0.63 | 0.55 | 0.41 | 0.16 | 0.50 | 0.28 | 0.40 | 0.03 | 0.08 | 0.04 | | 0.11 | 0.29 |
| | | | | | | | | | | | | | |
| Multiple Atypicals | 32 | 51 | 7 | 39 | 62 | 65 | 256 | 12 | 15 | 27 | | 0 | 283 |
| Percentage of Census | 0.24 | 0.32 | 0.06 | 0.26 | 0.46 | 0.27 | 0.28 | 0.06 | 0.20 | 0.10 | | 0.00 | 0.21 |
| | | | | | | | | | | | | | |
| Typical- Atypical | 36 | 60 | 49 | 56 | 27 | 113 | 341 | 56 | 21 | 77 | | 0 | 418 |
| Percentage of Census | 0.27 | 0.38 | 0.42 | 0.38 | 0.20 | 0.47 | 0.37 | 0.28 | 0.28 | 0.28 | | 0.00 | 0.30 |

Wellness Indicators

The National Association of State Mental Health Program Directors (NASMHPD) issued a report in October 2006 about mortality and morbidity in people with serious mental illness (SMI). According to Mental Health America's *Survey of People with Schizophrenia and Providers* (www.mentalhealthamerica.net), the NASMHPD report revealed that people with SMI die on average 25 years earlier than the general population. The major natural causes of death for people with SMI are heart disease, diabetes, respiratory disease and infectious disease. Many of the risk factors for these diseases are modifiable. Beginning June 2008, the state began compiling and comparing data on the number of tobacco users (Table 24) in our state hospitals.

Table 24 - Tobacco Users on Last Day of Month Civil and Long Term Care

| Month | Tobacco Users | CLA | DAN | NOR | TOR | WAR | WER | Civil Total | LTC | System Total |
|--------|---------------|-----|-----|-----|-----|-----|-----|-------------|-----|--------------|
| Mar-20 | Total Users | 0 | 0 | 0 | 0 | 0 | 0 | 0 | 8 | 8 |
| | % of Census | 0% | 0% | 0% | 0% | 0% | 0% | 0% | 6% | 1% |
| Jul-20 | Total Users | 0 | 0 | 0 | 0 | 0 | 0 | 0 | 8 | 8 |
| | % of Census | 0% | 0% | 0% | 0% | 0% | 0% | 0% | 6% | 1% |
| Oct-20 | Total Users | 0 | 0 | 0 | 0 | 0 | 0 | 0 | 8 | 8 |
| | % of Census | 0% | 0% | 0% | 0% | 0% | 0% | 0% | 6% | 1% |
| Feb-21 | Total Users | 0 | 0 | 0 | 0 | 0 | 0 | 0 | 6 | 6 |
| | % of Census | 0% | 0% | 0% | 0% | 0% | 0% | 0% | 5% | 0% |

Between July 2018 and December 2018 all six State Mental Hospitals became tobacco free campuses.

Table 25 - Reasons for Hospitalizations as the Result of an Incident, All Levels of Care

The Risk Management System requires that an incident report form be completed anytime a person is transported from a state hospital to an acute care hospital. This includes if the person was only seen in the emergency room, received diagnostic tests and/or was actually admitted. It does **not** include hospitalizations for a preplanned procedure, test or surgery.

| Cause | CLA | DAN | NOR | TOR | WAR | WER | Count |
|--------------------------------------|-----|-----|-----|-----|-----|-----|-------|
| Change in Medical Status-Stabilized | | | 1 | | | | 1 |
| Change in Medical Status-Transferred | 4 | 8 | 2 | 5 | 9 | 14 | 42 |
| Fall Type 1-Injury with treatment | 2 | | | | | | 2 |
| Fall Type 2-No treatment needed | | | | | | 2 | 2 |
| Seizure | | 1 | | | | | 1 |
| Self-Injurious behavior | | 1 | | | | 1 | 2 |
| Totals | 6 | 10 | 3 | 5 | 9 | 17 | 50 |

Medication Measures

Beginning in September 2008 the OMHSAS Bureau of Community and Hospital Operations identified the following three medication measures for inclusion in this monthly report. The table information is compiled from the QS1 pharmacy software and reflects the unique count of the number of people served at each hospital on the last day of the month for each measure.

Table 26 - Benzodiazepines

Measure Definition: *Benzodiazepines refers to the number of unique patients served at each hospital, by level-of-care, who have an active, straight order for any benzodiazepine medication on the last day of each month.*

| BZD | | | | | | | | Forensic | | | SRTP | Sys |
|------------|-----|-----|-----|-----|-----|-----|-------|-----------------|-----|-----|-------------|------------|
| M/Y | Cla | Dan | Nor | Tor | War | Wer | Total | Nor | Tor | Cnt | Tor | Total |
| Apr-20 | 94 | 78 | 63 | 29 | 55 | 72 | 391 | 5 | 5 | 10 | 9 | 410 |
| Jul-20 | 91 | 78 | 57 | 30 | 53 | 77 | 386 | 10 | 11 | 21 | 9 | 416 |
| Oct-20 | 92 | 84 | 52 | 27 | 64 | 79 | 398 | 13 | 5 | 18 | 7 | 423 |
| Feb-21 | 85 | 86 | 48 | 24 | 67 | 66 | 376 | 6 | 6 | 12 | 7 | 395 |

Table 27 - Multiple Atypicals

Measure Definition: *Multiple Atypicals refers to the number of unique patients served at each hospital, by level-of-care, who have an active, straight order for two or more atypical antipsychotic medications on the last day of each month.*

| Multiple Atypicals | | | | | | | | Forensic | | | SRTP | Sys |
|---------------------------|-----|-----|-----|-----|-----|-----|-------|-----------------|-----|-----|-------------|------------|
| M/Y | Cla | Dan | Nor | Tor | War | Wer | Total | Nor | Tor | Cnt | Tor | Total |
| Apr-20 | 21 | 41 | 7 | 38 | 50 | 59 | 216 | 13 | 10 | 23 | 0 | 239 |
| Jul-20 | 21 | 41 | 9 | 37 | 49 | 66 | 223 | 9 | 11 | 20 | 0 | 243 |
| Oct-20 | 28 | 46 | 5 | 39 | 53 | 66 | 237 | 5 | 11 | 16 | 0 | 253 |
| Feb-21 | 32 | 51 | 7 | 39 | 62 | 65 | 256 | 12 | 15 | 27 | 0 | 283 |

Table 28 - Typical-Atypical

Measure Definition: *Typical-Atypicals refers to the number of unique patients served at each hospital, by level-of-care, who have an active, straight order for a typical and an atypical antipsychotic medication on the last day of each month.*

| Typical - Atypical | | | | | | | | Forensic | | | SRTP | Sys |
|---------------------------|-----|-----|-----|-----|-----|-----|-------|-----------------|-----|-----|-------------|------------|
| M/Y | Cla | Dan | Nor | Tor | War | Wer | Total | Nor | Tor | Cnt | Tor | Total |
| Apr-20 | 39 | 49 | 46 | 64 | 33 | 117 | 348 | 61 | 30 | 91 | 0 | 439 |
| Jul-20 | 31 | 47 | 67 | 68 | 33 | 124 | 370 | 63 | 32 | 95 | 0 | 465 |
| Oct-20 | 38 | 52 | 50 | 63 | 25 | 122 | 350 | 61 | 28 | 89 | 0 | 439 |
| Feb-21 | 36 | 60 | 49 | 56 | 27 | 113 | 341 | 56 | 21 | 77 | 0 | 418 |

Table 29 - STAT Medication Usage – Civil

Measure Definition: STAT medication are counted as psychiatric medications that have been administered. If two STAT medications are administered, it is counted as one event. Each STAT medication event is documented by “Route of Administration” and “Requested by”. This measure includes all levels of care.

| CLARKS SUMMIT (FY 2020-21) | | | | | | | |
|----------------------------|-----------------------|----------------|----|-----------|---------------|-------|----|
| Month | Total Number of STATs | Route of Admin | | | Requested by: | | |
| | | PO | IM | PEG Tube: | Indv | MD/DO | RN |
| Feb-21 | 66 | 57 | 9 | 0 | 34 | 26 | 6 |

| DANVILLE (FY 2020-21) | | | | | | | |
|-----------------------|-----------------------|----------------|-----|-----------|---------------|-------|-----|
| Month | Total Number of STATs | Route of Admin | | | Requested by: | | |
| | | PO | IM | Peg Tube: | Indv | MD/OD | RN |
| Feb-21 | 192 | 36 | 156 | 0 | 47 | 11 | 134 |

| NORRISTOWN - CIVIL (FY 2020-21) | | | | | | | |
|---------------------------------|-----------------------|----------------|----|-----------|---------------|-------|----|
| Month | Total Number of STATs | Route of Admin | | | Requested by: | | |
| | | PO | IM | Peg Tube: | Indv | MD/DO | RN |
| Feb-21 | 112 | 38 | 74 | 0 | 9 | 7 | 96 |

| TORRANCE - CIVIL (FY 2020-21) | | | | | | | |
|-------------------------------|-----------------------|----------------|----|-----------|---------------|-------|----|
| Month | Total Number of STATs | Route of Admin | | | Requested by: | | |
| | | PO | IM | Peg Tube: | Indv | MD/DO | RN |
| Feb-21 | 52 | 17 | 35 | 0 | 9 | 5 | 38 |

| WARREN (FY 2020-21) | | | | | | | |
|---------------------|-----------------------|----------------|----|----------|---------------|-------|----|
| Month | Total Number of STATs | Route of Admin | | | Requested by: | | |
| | | PO | IM | Peg Tube | Indv | MD/DO | RN |
| Feb-21 | 130 | 69 | 58 | 3 | 45 | 27 | 58 |

| WERNERSVILLE (FY 2020-21) | | | | | | | |
|---------------------------|-----------------------|----------------|----|-----------|---------------|-------|----|
| Month | Total Number of STATs | Route of Admin | | | Requested by: | | |
| | | PO | IM | Peg Tube: | Indv | MD/DO | RN |
| Feb-21 | 89 | 74 | 15 | 0 | 45 | 12 | 32 |

Table 30 - STAT Medication Usage – Forensic

| NORRISTOWN - FORENSIC (FY 2020-21) | | | | | | | |
|------------------------------------|-----------------------|----------------|----|----------------|---------------|-------|-----|
| Month | Total Number of STATs | Route of Admin | | | Requested by: | | |
| | | PO | IM | Peg Tube/other | Indv | MD/DO | RN |
| Feb-21 | 147 | 53 | 94 | 0 | 12 | 30 | 105 |

| TORRANCE - FORENSIC (FY 2020-21) | | | | | | | |
|----------------------------------|-----------------------|----------------|----|-----------|---------------|-------|----|
| Month | Total Number of STATs | Route of Admin | | | Requested by: | | |
| | | PO | IM | Peg Tube: | Indv | MD/DO | RN |
| Feb-21 | 61 | 32 | 29 | 0 | 17 | 19 | 25 |

Table 31 - STAT Medication Usage – ACT 21 (SRTP)

| TORRANCE - ACT 21 (FY 2020-21) | | | | | | | |
|--------------------------------|-----------------------|----------------|----|-----------|---------------|-------|----|
| Month | Total Number of STATs | Route of Admin | | | Requested by: | | |
| | | PO | IM | Peg Tube: | Indv | MD/DO | RN |
| Feb-21 | 1 | 1 | 0 | 0 | 0 | 0 | 1 |