



pennsylvania

DEPARTMENT OF HUMAN SERVICES
OFFICE OF MENTAL HEALTH AND
SUBSTANCE ABUSE SERVICES



Pennsylvania State Hospital Risk Management Summary and Indicator Report

January 2021

Prepared by:
Christina Sterner, M.S. CPIE
Wernersville State Hospital
E-Mail: csterner@pa.gov
Contributors:
SMH CPIEs & PI Staff
Valerie Minnich, RPh
July 21, 2021

Introduction

The State Hospital Risk Management System defines an incident as any patient-related event that has the potential for, or which results in, a negative impact upon the quality of patient care or services, including injury or death of a person served in the state hospital system. Past reports can be found on the DHS website using the following link.

<http://www.dhs.pa.gov/publications/forproviders/statehospitalriskmanagementsummaryreports/>

The data dictionary for the measurement system was updated on October 1, 2008, and is available for review as attachments to OMHSAS Bulletin titled Management of Incidents: SI-815 Incident Reporting and Risk Management Policy and Procedural Change. (Available via bulletin search at <http://www.dhs.pa.gov/> .)

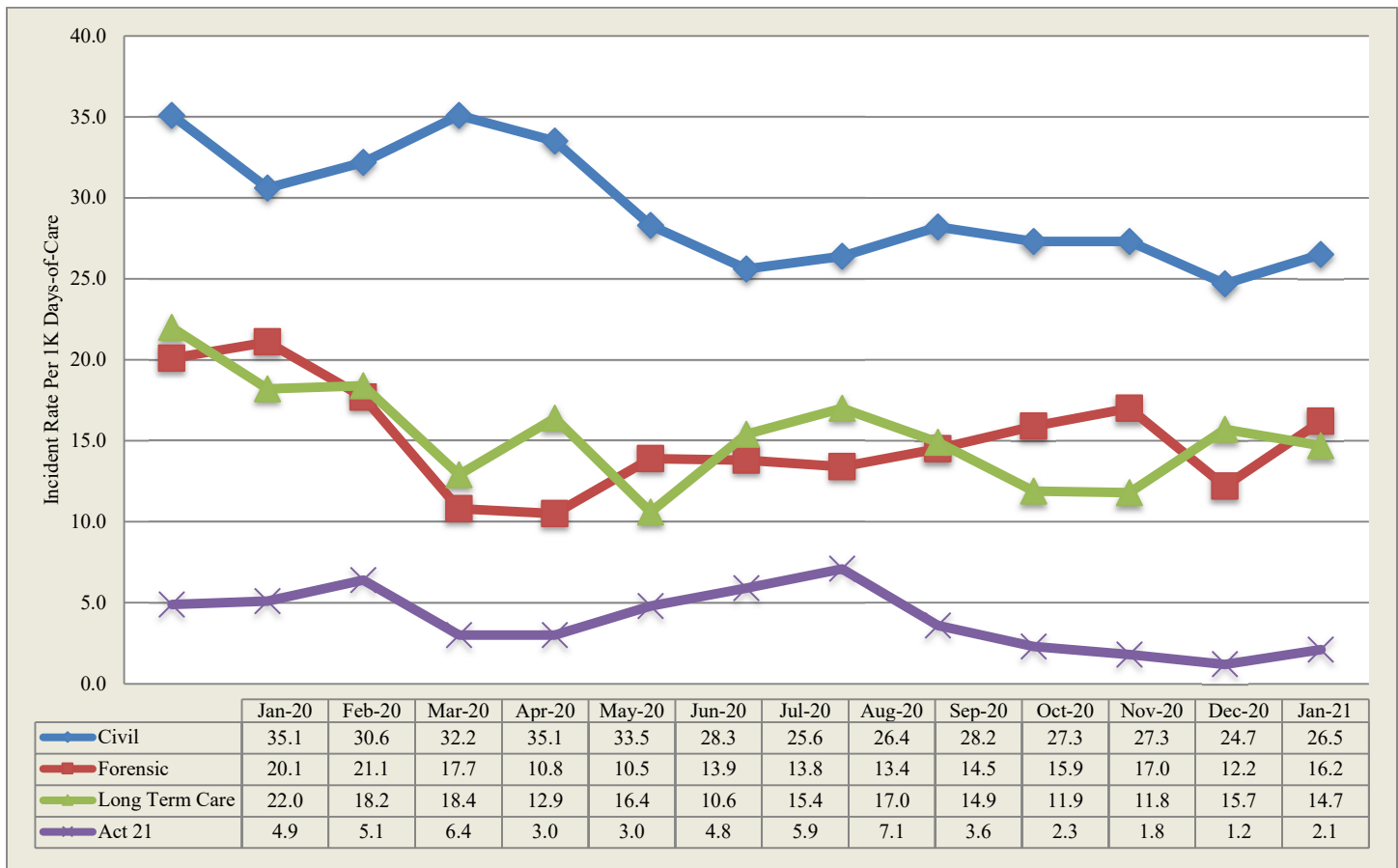
Table of Contents		
Indicator/Measure	Table	Page
Risk Management Indicators		
Census and Rates of Incidents	1	3
Thirteen-Month Trend of Incidents		3
Six-Month Summary of Selected Events		4
Category or Cause of Incidents: Civil	2	5
Primary Effect of Incidents: Civil	3	6
Category or Cause of Incidents: Forensic	4	7
Effect of Incidents: Forensic	5	7
Cause of Incidents: Long Term Care	6	8
Effect of Incidents: Long Term Care	7	8
Cause of Incidents: SRTP	8	9
Effect of Incidents: SRTP	9	9
13-Month Rate of Type 1 Falls per 1,000 Days of Care	10	10
13-Month Trend of Type 1 Falls		10
Hours of Seclusion Use	11	11
Number of Seclusion Events	12	11
Total Hours of Mechanical Restraint by Unit	13	11
Hours of Mechanical Restraint Use: 12 Months	14	11
Number of Mechanical Restraint Events: 12 Months	15	11
Hours of Physical Restraint Use by Unit	16	12
Hours of Physical Restraint Use: 12 Months	17	12
Number of Physical Restraint Events: 12 Months	18	12
24-Month Trend of Restraint and Seclusion Hours		13
Patient-to-Patient Assaults by Unit	19	14
13-Month Rate of Patient-to-Patient Assault Events with Injury per 1,000 Days-of-Care	20	14
Patient-to-Staff Assaults by Unit	21	15
13-Month Rate of Patient-to-Staff Assaults with Injury to Staff per 1,000 Days-of-Care	22	15
Risk Adjusted Table of Selected Safety Indicators	23	16
Wellness Indicators		
Tobacco Users	24	17
Reasons for Hospitalization as a Result of an Incident	25	17
Medication Use Indicators		
Benzodiazepines	26	18
Multiple Atypicals	27	18
Typical-Atypical	28	18
STAT Medication Usage		
Civil	29	19
Forensic	30	20
ACT 21 (SRTP)	31	20

During **January 2021**, a total of **937** incident reports were completed by the state hospital system. Additional records addressing specific categories from the previous month were included on page 4 of this report. The following is a breakdown of incidents by individual facility and type of care:

Table 1 - Number of Incident Reports

	Census 1/31/2021	Days Provided	Incidents	Per 1000 Days-of-Care
Clarks Summit	131	4092	37	9.0
Danville	157	4774	294	61.6
Norristown	114	3509	77	21.9
Torrance	142	4406	94	21.3
Warren	125	3826	116	30.3
Wernersville	249	7774	134	17.2
Total Civil	918	28381	752	26.5
Forensic				
Norristown	183	5963	111	18.6
Torrance	64	1981	18	9.1
Total Forensic	247	7944	129	16.2
Act 21				
Act 21	61	1891	4	2.1
Total Act 21	61	1891	4	2.1
Long Term Care				
South Mountain	112	3542	52	14.7
Total L. T. C.	112	3542	52	14.7
Total	1758	41758	937	22.4

Thirteen-Month Trend of Incidents by Type of Care per 1,000 Days of Care



*Note: Rules regarding the reporting of incidents involving patient-to-patient assaults require a separate incident report form on each person involved in an altercation. This includes both the aggressor, when known and any other person involved. The numbers reported above reflect the monthly, total number of SI-815 reports coded as Patient-to-Patient Assaults and not the actual number of altercations.

The following table is refreshed each month from the most recent data (recent 6 month period) available from the State Hospital System RM database.

CATEGORY	Count	Aug_20	Sep_20	Oct_20	Nov_20	Dec_20	Jan_21
Accident-Injury	163	39	30	24	24	20	26
Adverse Drug Reaction	4	1				2	1
Aggression	878	172	153	166	174	111	102
Airway Obstruction type 1 Intervention	17	2	2	4	3	6	
Airway Obstruction type 2 No Intervention	9	1	2	3		1	2
Alleged Nonconsensual Sexual Activity	15		7		6	1	1
Alleged Pt. Abuse	13	1	2	2	2	3	3
Assault, Pt./Pt	1494	219	268	225	281	216	285
Assault, Pt./Staff	338	61	47	79	63	41	47
Assault: Patient/Other	1				1		
AWOL/UA	11	2	1	2	3	2	1
AWOL-Attempt	21	5	1	3	2	7	3
AWOL-Late	6		1	2	2		1
Change in Medical Status-Stabilized	19	2	4	5	3	2	3
Change in Medical Status-Transferred	341	51	46	54	51	84	55
Charged with alleged crime off hospital grounds	1	1					
Charged with alleged crime on hospital grounds	1		1				
Communications Sys. Misuse	45	4	11	5	6	10	9
Community Incident	4			1	1	1	1
Contraband Possession	74	17	15	14	5	12	11
Fall Type 1-Injury with treatment	241	43	43	37	39	49	30
Fall Type 2-No treatment needed	682	101	116	111	106	128	120
Family Concern	5				1		4
Illicit Substance Use/Possession	1				1		
Indeterminate/Unconfirmed Cause of Injury	84	15	15	11	19	10	14
Medication Error	99	28	24	14	9	11	13
Missing Property	14	4	2	1		4	3
Other	302	51	55	54	46	55	41
Procedural Treatment Error	13	4	1	3	2	1	2
Property Damage	92	14	21	20	11	12	14
Seizure	52	11	10	7	7	11	6
Self-Injurious behavior	646	121	110	123	81	80	131
Sexual Behavior	33	6	13	7	2	2	3
Smoking Violation	9	3	1		5		
Substantiated Patient Abuse	9	2	2	4	1		
Suicide Attempt	3	1	1	1			
Suicide threat/plan	11	1	2	1	3	2	2
Theft	11	1	2	1	5		2
Unknown	1		1				
Unsubstantiated Nonconsensual Sexual Activity	4		1	1		1	1
Unsubstantiated Patient Abuse	12	2	4	3	2	1	

Table 2 - Category or Cause of Incidents in the Civil Hospitals

Primary Cat #	CLA	DAN	NOR	TOR	WAR	WER	Count
Accident-Injury	1	7	0	0	4	3	15
Aggression	3	9	5	14	23	20	74
Airway Obstruction type 2 No Intervention	0	1	0	0	1	0	2
Alleged Pt. Abuse	0	2	0	0	0	0	2
Assault, Pt./Pt	4	104	51	13	16	26	214
Assault, Pt./Staff	2	23	5	3	4	3	40
AWOL/UA	1	0	0	0	0	0	1
AWOL-Attempt	0	1	0	0	1	1	3
AWOL-Late	0	0	0	0	1	0	1
Change in Medical Status-Stabilized	0	0	1	0	0	0	1
Change in Medical Status-Transferred	2	7	2	6	8	22	47
Communications Sys. Misuse	2	0	0	0	7	0	9
Community Incident	0	0	0	0	0	1	1
Contraband Possession	0	4	0	1	0	0	5
Fall Type 1-Injury with treatment	3	3	1	5	0	7	19
Fall Type 2-No treatment needed	7	31	1	24	26	18	107
Family Concern	0	0	0	0	0	4	4
Indeterminate/Unconfirmed Cause of Injury	1	1	0	6	2	4	14
Medication Error	1	6	0	1	0	1	9
Missing Property	0	0	0	2	0	1	3
Other	0	11	2	8	0	6	27
Property Damage	1	7	3	2	0	0	13
Seizure	0	4	0	1	0	1	6
Self-Injurious behavior	7	72	6	7	21	14	127
Sexual Behavior	0	0	0	1	0	2	3
Suicide threat/plan	1	1	0	0	0	0	2
Theft	1	0	0	0	1	0	2
Unsubstantiated Nonconsensual Sexual Activity	0	0	0	0	1	0	1
Totals	37	294	77	94	116	134	752

Table 3 - Primary Effect of Incidents in the Civil Hospitals

Primary effect	CLA	DAN	NOR	TOR	WAR	WER	Count
Abrasion/scrape/scratch/hematoma	4	21	13	10	10	7	65
Bite-Human	0	0	0	0	0	2	2
Body System Illness	1	10	0	2	6	3	22
Bruise/contusion/discoloration	1	5	1	5	2	8	22
Burn/Scald	0	0	0	0	0	1	1
Cellulitis	0	0	1	0	0	0	1
Constipation	0	1	0	0	0	0	1
Death	0	0	1	0	0	0	1
Edema/swelling	2	5	0	3	3	1	14
Epistaxis	0	1	0	0	0	1	2
Erythema/redness	0	7	1	2	6	3	19
Fever	0	0	0	1	0	2	3
Ingestion of foreign body	0	0	2	0	6	8	16
Laceration: NO sutures/staples/steri-strips	3	1	1	0	0	2	7
Laceration: with steristrips/glue	1	0	0	0	1	1	3
Laceration: with sutures/staples	0	0	0	0	0	1	1
Lethargy	0	1	0	1	0	4	6
No Injury/NA	23	222	46	51	75	64	481
Other	0	7	0	13	2	16	38
Pain unspecified	0	0	3	1	0	1	5
Pain, Specified	1	8	7	3	4	6	29
Puncture/stab wound	1	0	0	0	1	0	2
Respiratory Distress	0	0	0	0	0	2	2
Seizure	0	2	0	0	0	1	3
Skin Irritation/Rash	0	0	0	1	0	0	1
Syncopal episode	0	3	1	1	0	0	5
Totals	37	294	77	94	116	134	752

Table 4 - Cause of Incidents in the Forensic Units Category or Cause of Incidents in the Forensic Service by Unit

Primary Cat #	NSH											TSH					Sys
	51A1	51A2	51B1	51B2	51C1	51C2	10D1	10D2	10E1	10E2	Total	FB3	FB4	FC1	FC2	Total	Count
Adverse Drug Reaction								1			1					0	1
Aggression		1	4	1	4		2		5	1	18	4	4	1		9	27
Alleged Nonconsensual Sexual Activity							1				1					0	1
Alleged Pt. Abuse			1								1					0	1
Assault, Pt./Pt		2	7	18	6	11	6		9	3	62				3	3	65
Assault, Pt./Staff			2	3							5	1				1	6
Change in Medical Status-Stabilized					2						2					0	2
Contraband Possession		2		2		1					5					0	5
Fall Type 1-Injury with treatment	1		1		1						3		1			1	4
Fall Type 2-No treatment needed									2	1	3	1				1	4
Medication Error			1			1					2					0	2
Other				1	2		1				4	1			1	2	6
Property Damage									1		1					0	1
Self-Injurious behavior			2		1						3			1		1	4
Totals	1	5	18	25	16	13	10	1	17	5	111	7	5	2	4	18	129

Table 5 - Effect of Incidents in the Forensic Service by Unit

EFFECT	NSH											TSH					Sys
	51A1	51A2	51B1	51C1	51C2	51B2	10D1	10D2	10E1	10E2	Total	FB3	FB4	FC1	FC2	Total	Count
Abrasion/scrape/scratch/hematoma				2	2	1			1	1	7					0	7
Bite-Insect											0				1	1	1
Bruise/contusion/discoloration	1	1	1		1	2	1				7					0	7
Edema/swelling				2							2		1			1	3
Epistaxis							1				1					0	1
Erythema/redness					2						2	1			1	2	4
Laceration: NO sutures/staples/steri-strips			1				1				2					0	2
No Injury/NA		3	15	9	8	21	7	1	15	4	83	4	4	1	1	10	93
Other		1									1	2		1		3	4
Pain unspecified			1			1					2					0	2
Pain, Specified				2					1		3				1	1	4
Unconscious/Unresponsive				1							1					0	1
Totals	1	5	18	16	13	25	10	1	17	5	111	7	5	2	4	18	129

Table 6 -Cause of Incidents in the Long Term Care Facility

Cause	3A	3B	5A	6A	6B	Count
Accident-Injury	2	1	2	1	2	8
Aggression		1				1
Assault, Pt./Pt		2			4	6
Assault, Pt./Staff			1			1
Change in Medical Status-Transferred	2		3	2	1	8
Fall Type 1-Injury with treatment	3	2		1	1	7
Fall Type 2-No treatment needed	4	2	2	1		9
Medication Error					2	2
Other	1	2	1	3	1	8
Procedural Treatment Error	1	1				2
Totals	13	11	9	8	11	52

Table 7 - Effect of Incidents in the Long Term Care Facility

EFFECT	3A	3B	5A	6A	6B	Count
Abrasion/scrape/scratch/hematoma	2			1		3
Blister		1				1
Bruise/contusion/discoloration			1	1	3	5
Death	1	2	1	3	1	8
Fever					1	1
Fracture	2					2
Laceration: NO sutures/staples/steri-strips	1					1
Laceration: with steristrips/glue		2				2
No Injury/NA	5	6	3	1	6	21
Other	2		1			3
Pain, Specified			1			1
Respiratory Distress			2	2		4
Totals	13	11	9	8	11	52

Act-21-Sexual Responsibility & Treatment Program at Torrance State Hospital

In July 2003, the Pennsylvania Legislature enacted Act 21 for adjudicated youth, aging out of the juvenile justice system who have a "mental abnormality" that renders them unable to control their violent sexual impulses. The Act mandates the state to provide mental health and sex-offense specific treatment to an identified population that had been adjudicated of certain sex crimes, received treatment in a juvenile program, yet remains a significant risk to sexually re-offend after reaching the age of 21, an age when oversight by the juvenile justice system typically ends. The Act requires the referral of such individuals who have committed these specific crimes to the Pennsylvania Sexual Offenders Assessment Board (SOAB) ninety days prior to their 20th birthday for purposes of determining if the individual has "serious difficulty in controlling sexually violent behavior." If so determined, a petition for a mental health hearing will be made for determination of civil commitment to the Sexual Responsibility and Treatment Program (SRTP) on the grounds of Torrance State Hospital. On July 1, 2006, the operation of this program transferred from an independent contractor to the Torrance State Hospital.

Table 8 - Cause of Incidents in the Sexual Responsibility and Treatment Program

Cause	TOR	Count
Accident-Injury	3	3
Contraband Possession	1	1
Totals	4	4

Table 9 - Effect of Incidents in the Sexual Responsibility and Treatment Program

Primary effect	TOR	Count
Bruise/contusion/discoloration	1	1
No Injury/NA	2	2
Other	1	1
Totals	4	4

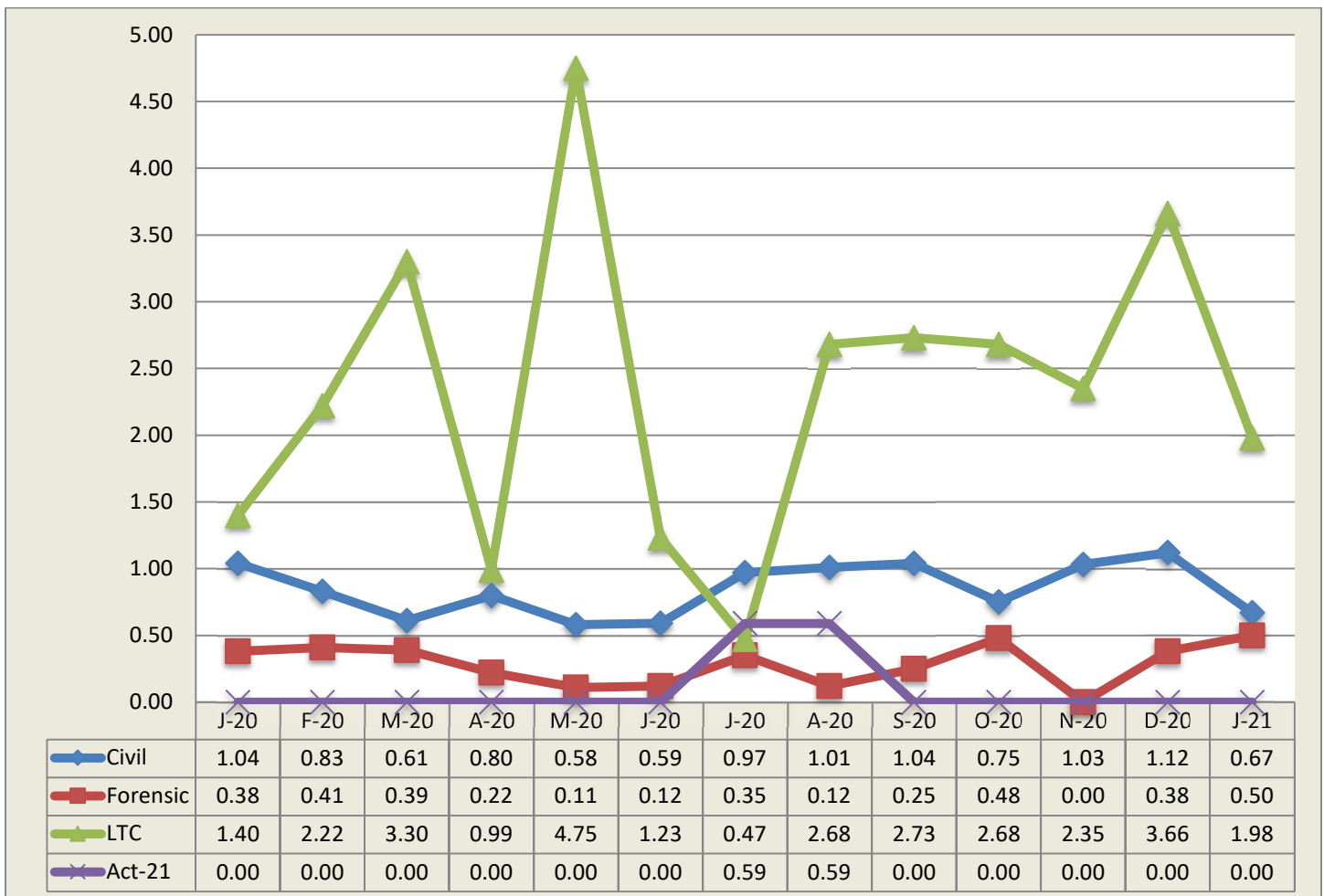
Falls

Falls within the state hospital risk management system are divided into two categories, type 1 and type 2, with the need for medical intervention or lack thereof defining the difference. The following data relates to falls, type 1 which are defined as an involuntary descent to a lower position, excluding seizures, that is witnessed or reported and requires medical intervention.

Table 10 - 13-Month Rate of Type 1 Falls Per 1,000 Days-of-Care

M/Year	Civil Hospital							Forensic			A21	LTC	Sys Avg
	Cla	Dan	Nor	Tor	War	Wer	Ttl	Nor	Tor	Total	A21	SMRC	
Jan-20	0.68	0.20	0.55	2.83	0.23	1.49	1.04	0.40	0.35	0.38	0.00	1.40	0.89
Feb-20	1.22	0.43	0.59	1.00	0.00	1.32	0.83	0.28	0.76	0.41	0.00	2.22	0.84
Mar-20	0.23	0.40	0.00	1.82	0.00	0.86	0.61	0.28	0.39	0.39	0.00	3.30	0.77
Apr-20	0.24	0.85	0.58	1.35	0.73	0.89	0.80	0.30	0.00	0.22	0.00	0.99	0.67
May-20	1.36	0.00	0.61	0.85	0.00	0.62	0.58	0.15	0.00	0.11	0.00	4.75	0.86
Jun-20	0.46	0.63	0.31	1.32	0.24	0.51	0.59	0.00	0.45	0.12	0.00	1.23	0.53
Jul-20	0.44	0.63	0.87	1.74	0.00	1.59	0.97	0.48	0.00	0.35	0.59	0.47	0.79
Aug-20	1.33	0.00	0.87	1.31	0.48	1.59	1.01	0.17	0.00	0.12	0.59	2.68	0.98
Sep-20	0.70	0.00	0.87	1.83	0.24	1.92	1.04	0.17	0.47	0.25	0.00	2.73	1.01
Oct-20	0.68	0.21	0.29	1.58	0.71	0.87	0.75	0.49	0.45	0.48	0.00	2.68	0.85
Nov-20	1.42	0.21	0.61	3.09	0.00	0.90	1.03	0.00	0.00	0.00	0.00	2.35	0.91
Dec-20	1.18	0.00	1.48	1.63	0.25	1.77	1.12	0.51	0.00	0.38	0.00	3.66	1.16
Jan-21	0.73	0.63	0.28	1.13	0.00	0.90	0.67	0.50	0.50	0.50	0.00	1.98	0.72

13-Month Trend of Type 1 Falls by Type of Care per 1,000 Days-of-Care



State Hospital Use of Seclusion

Civil and Forensic

Data on seclusion use for psychiatric reasons includes the civil and forensic populations and is reported for both monthly and yearly totals.

Table 11 - Hours of Seclusion Use, Monthly Totals for Past Year

No Use of Seclusion in PA State Hospital system since July 2013

Table 12 - Number of Seclusion Events, Monthly Totals for Past Year

No Use of Seclusion in PA State Hospital system since July 2013

State Hospital Use of Mechanical Restraint

Civil and Forensic

Data on mechanical restraint use for psychiatric reasons includes the forensic and civil populations and is reported for both monthly and yearly totals.

Table 13 - Total Hours of Mechanical Restraint Use by Hospital and Unit In Month

No use of Mechanical Restraint in PA State Hospital system since September 2015

Table 14 - Hours of Mechanical Restraint Use, Monthly Totals for Past Year

No use of Mechanical Restraint in PA State Hospital system since September 2015

Table 15 - Number of Mechanical Restraint Events, Monthly Totals for Past Year

No use of Mechanical Restraint in PA State Hospital system since September 2015

State Hospital Use of Physical Holds

Data on physical holds use for psychiatric reasons includes all level of care populations and is reported for both monthly and yearly totals. Physical hold events lasting less than 60 seconds are reflected as 0.00 hours.

Table 16 - Hours of Physical Holds (Restraint) Used by Hospital & Unit

ABV	WARD	Total
DAN	312	0.60
WAR	3SW	0.15
TOR	013	0.15
NOR	01A2	0.08
NOR	01C2	0.06
WAR	3IM	0.05
WAR	2NM	0.05
TOR	FC1	0.05

ABV	WARD	Total
TOR	FB3	0.05
TOR	024	0.05
WER	35-2	0.05
NOR	51B2	0.04
NOR	01C1	0.04
NOR	51B1	0.03
NOR	51C1	0.02
DAN	212	0.02

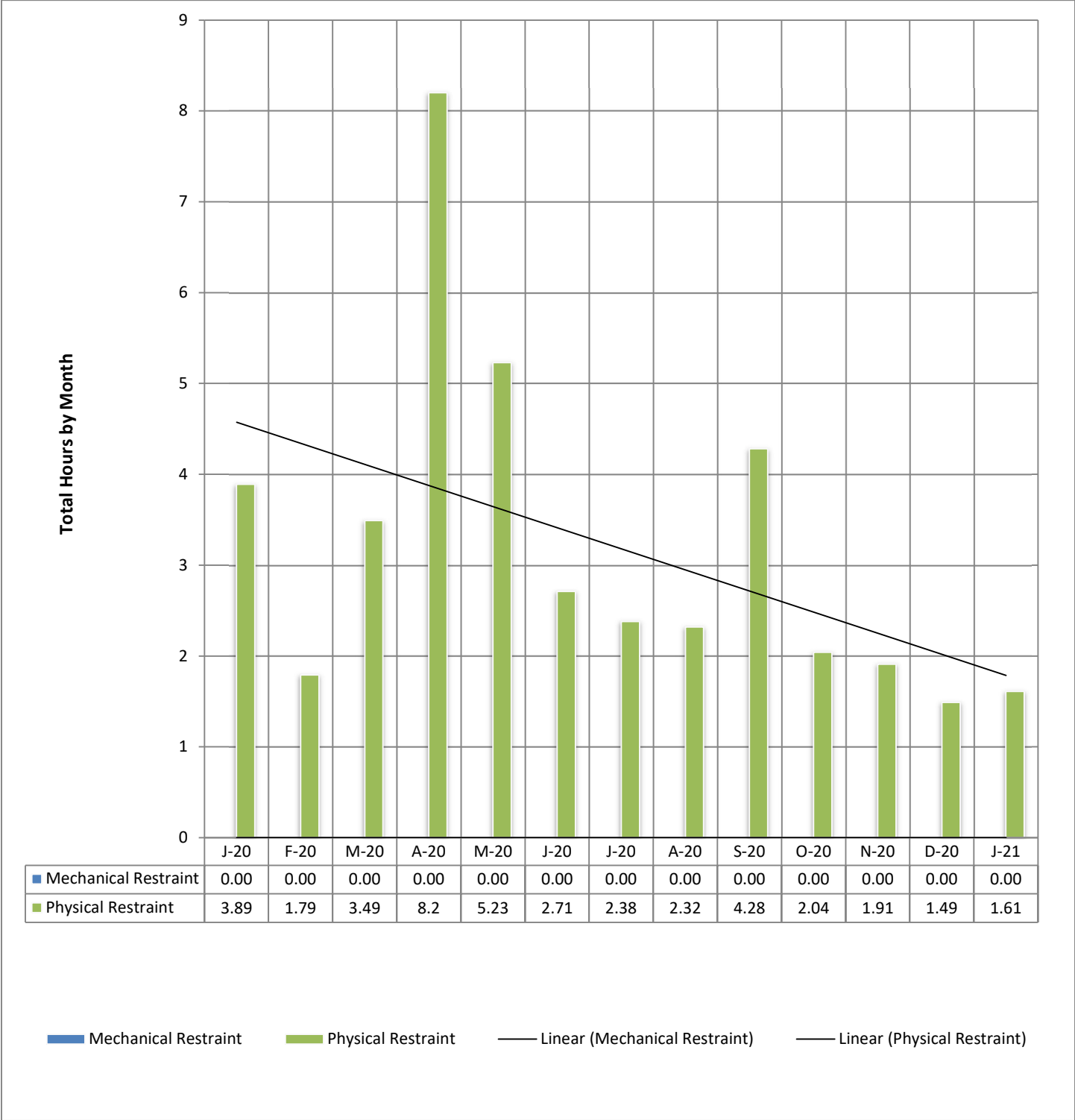
ABV	WARD	Total
NOR	51C2	0.01
NOR	10E2	0.01
CLA	4	0.01
WER	34-4	0.01
NOR	51A2	0.01
NOR	10D1	0.004
NOR	01A1	0.004

Table 17 - Hours of Physical Holds (Restraint) Use, Monthly Totals for Past Year

ABV	Total	Feb_20	Mar_20	Apr_20	May_20	Jun_20	Jul_20	Aug_20	Sep_20	Oct_20	Nov_20	Dec_20	Jan_21
CLA	13.16	0.15	0.03	0.33	1.07	0.21	0.15	0.22	0.48	0.05	0.17	0.03	0.01
DAN	5.72	0.06	0.86	0.79	0.65	0.72	0.23	0.14	0.70	0.11	0.07	0.04	1.34
NOR	5.93	0.79	0.64	0.39	0.28	0.31	0.65	0.18	0.36	0.88	0.70	0.44	0.32
TOR	7.52	0.22	0.90	0.45	0.62	0.47	1.04	0.60	0.80	0.40	0.62	0.72	0.30
WAR	40.23	1.96	1.35	6.58	2.57	2.09	1.13	0.55	0.30	0.55	0.57	0.44	1.42
WER	4.31	0.18	0.13	0.10	0.05	0.03	0.85	0.46	2.21	0.07	0.04	0.14	0.06
Total	76.87	3.36	3.91	8.64	5.24	3.83	4.05	2.14	4.84	2.05	2.16	1.81	3.45

Table 18 - Number of Physical Holds (Restraint) Events, Monthly Totals for Past Year

ABV	Total	Feb_20	Mar_20	Apr_20	May_20	Jun_20	Jul_20	Aug_20	Sep_20	Oct_20	Nov_20	Dec_20	Jan_21
CLA	71	3	3	7	24	4	2	8	11	1	6	1	1
DAN	136	4	23	12	18	13	9	6	17	7	4	3	20
NOR	319	51	44	28	16	18	22	17	22	32	25	13	31
TOR	84	3	11	7	8	6	11	12	9	2	5	6	4
WAR	249	8	18	52	79	29	8	13	4	14	10	9	5
WER	47	8	5	3	4	1	4	5	3	4	3	4	3
Total	906	77	104	109	149	71	56	61	66	60	53	36	64



Assaults

Assaults within the state hospital system are defined as any aggressive act by a patient, involving physical contact that may or may not result in injury. Assaults can be directed at a peer, staff or any other individual. The system was designed to require an incident report (form SI-815) on any patient involved in a physical altercation regardless of who may have started the assault. Therefore, every patient-to-patient altercation will result in at least two incident reports.

Table 19 - Patient-to-Patient Assaults by Unit, All Levels of Care

ABV	WARD	Cnt	ABV	WARD	Cnt	ABV	WARD	Cnt
DAN	312	48	WER	37-2	6	DAN	210	2
DAN	212	38	NOR	51C1	6	DAN	311	2
NOR	01C1	24	NOR	10D1	6	CLA	6	2
NOR	51B2	18	TOR	024	5	WAR	2NM	2
DAN	310	12	WAR	3SW	4	TOR	012	2
NOR	51C2	11	WER	35-3	4	NOR	51A2	2
NOR	01A1	10	TOR	013	4	SMO	3B	2
NOR	01A2	10	SMO	6B	4	TOR	011	2
WER	35-4	9	WER	34-4	3	WAR	3NM	2
NOR	10E1	9	TOR	FC2	3	CLA	2	1
WAR	3IM	8	WER	35-2	3	WER	37-3	1
NOR	01C2	7	NOR	10E2	3	CLA	4	1
NOR	51B1	7	DAN	211	2			

Table 20 - Rate of Patient-to-Patient Assaults Events with Patient Injury per 1,000 Days-of-Care

Pt.-to-Pt. Assault w/ any Injury	Civil							Forensic			S RTP
	Cla	Dan	Nor	Tor	War	Wer	Tot.	Nor	Tor	Tot.	S RTP
Jan-20	0.23	1.22	6.04	4.01	0.45	1.00	1.89	3.96	1.39	3.25	0.00
Feb-20	1.46	0.87	4.39	2.24	0.74	0.66	1.51	4.81	1.53	3.92	0.00
Mar-20	0.93	2.63	3.86	2.50	1.67	0.86	1.89	4.37	0.00	3.20	0.00
Apr-20	0.72	1.49	6.13	0.68	2.20	1.14	1.81	2.07	0.00	1.54	0.61
May-20	0.68	0.83	3.98	0.64	2.14	1.48	1.49	2.83	0.00	2.12	0.00
Jun-20	0.46	1.69	4.34	0.66	3.83	0.63	1.66	1.27	0.91	1.18	0.00
Jul-20	0.22	1.05	3.77	1.09	1.17	1.22	1.31	1.62	2.06	1.74	0.59
Aug-20	0.89	1.03	4.65	1.09	2.63	1.35	1.75	1.52	0.87	1.34	0.00
Sep-20	0.46	2.15	4.95	2.06	0.71	0.89	1.67	2.44	0.00	1.78	0.00
Oct-20	0.23	2.09	3.43	1.13	0.24	0.75	1.19	3.79	0.45	2.90	0.00
Nov-20	1.42	1.90	4.86	1.66	1.02	0.90	1.74	5.04	0.00	3.67	0.00
Dec-20	0.00	2.25	4.13	0.93	0.76	0.50	1.25	2.91	0.00	2.13	0.00
Jan-21	0.00	3.35	4.84	1.59	1.31	1.03	1.87	3.52	1.01	2.90	0.00

Table 21 - Patient-to-Staff Assault Events by Unit, All Levels of Care

ABV	WARD	Cnt
DAN	312	11
DAN	310	6
DAN	212	4
NOR	51B2	3
NOR	01C2	3
WER	35-2	3
TOR	013	2

ABV	WARD	Cnt
DAN	311	2
WAR	3SW	2
NOR	51B1	2
TOR	011	1
SMO	5A	1
TOR	FB3	1

ABV	WARD	Cnt
CLA	4	1
NOR	01C1	1
NOR	01A2	1
WAR	2NM	1
WAR	2SW	1
CLA	6	1

Table 22 - Rate of Patient-to-Staff Assault Events with Injury to Staff per 1,000 Days-of-Care

Pt/Staff Assault w/ Staff Inj per 1K days	Civil							Forensic			S RTP
	Cl a	Dan	Nor	Tor	War	Wer	Tot.	Nor	Tor	Tot.	S RTP
Jan-20	0.00	0.81	0.27	0.71	0.68	0.75	0.57	0.26	0.69	0.38	0.00
Feb-20	0.73	0.22	0.59	0.25	0.25	0.93	0.54	0.71	0.00	0.52	0.00
Mar-20	0.70	0.00	0.28	1.36	0.95	0.12	0.51	0.56	0.00	0.41	0.00
Apr-20	0.00	0.00	0.29	0.00	3.67	0.51	0.70	0.74	0.43	0.66	0.00
May-20	0.68	0.00	0.00	0.00	2.38	0.00	0.44	0.15	0.00	0.11	0.00
Jun-20	0.23	0.63	0.00	0.00	2.15	0.38	0.55	0.64	0.45	0.59	0.00
Jul-20	0.44	0.21	0.29	0.00	1.17	0.37	0.40	0.81	1.65	1.04	0.00
Aug-20	0.00	0.41	0.00	0.22	0.72	0.37	0.30	0.51	0.87	0.61	0.00
Sep-20	0.00	1.07	0.29	0.91	0.24	0.26	0.45	0.17	0.00	0.13	0.00
Oct-20	0.23	1.46	0.29	0.45	0.71	1.87	0.99	0.49	0.00	0.36	0.00
Nov-20	0.00	0.42	0.30	0.47	1.02	0.13	0.36	0.17	0.93	0.38	0.00
Dec-20	0.00	0.00	0.59	0.23	0.00	0.13	0.14	0.17	1.42	0.50	0.00
Jan-21	0.00	0.00	0.28	0.45	0.52	0.26	0.25	0.34	0.00	0.25	0.00

Table 23 - Risk Adjusted Safety Indicators

Jan-21	Civil							Forensic					
Month	Cla	Dan	Nor	Tor	War	Wer	C. Tota	Nor	Tor	F. Total	LTC	SRTP	System
Patient Days	4092	4774	3509	4406	3826	7774	28381	5963	1981	7944	3542	1891	41758
Census	131	157	114	142	125	249	918	183	64	247	112	61	1338
Safety Indicators													
Type 1 Falls (count)	3	3	1	5	0	7	19	3	1	4	7	0	30
Num Per 1,000 Pt Days	0.73	0.63	0.28	1.13	0.00	0.90	0.67	0.50	0.50	0.50	1.98	0.00	0.72
Total Falls (count)	10	34	2	29	26	25	126	6	2	8	16	0	150
Num Per 1,000 Pt Days	2.44	7.12	0.57	6.58	6.80	3.22	4.44	1.01	1.01	1.01	4.52	0.00	3.59
PT:PT Assaults w/Injury(count)													
PT:PT Assaults w/Injury(count)	0	16	17	7	5	8	53	21	2	23	0	0	76
Num Per 1,000 Pt Days	0.00	3.35	4.84	1.59	1.31	1.03	1.87	3.52	1.01	2.90	0.00	0.00	1.82
Total PT:PT Assault Events (count)	4	104	51	13	16	26	214	62	3	65	6	0	285
Num Per 1,000 Pt Days	0.98	21.78	14.53	2.95	4.18	3.34	7.54	10.40	1.51	8.18	1.69	0.00	6.83
PT:Staff Assaults w/Injury(count)													
PT:Staff Assaults w/Injury(count)	0	0	1	2	2	2	7	2	0	2	0	0	9
Num Per 1,000 Pt Days	0.00	0.00	0.28	0.45	0.52	0.26	0.25	0.34	0.00	0.25	0.00	0.00	0.22
Total PT:Staff Assault Events (count)	2	23	5	3	4	3	40	5	1	6	1	0	47
Num Per 1,000 Pt Days	0.49	4.82	1.42	0.68	1.05	0.39	1.41	0.84	0.50	0.76	0.28	0.00	1.13
SIB Events (count)													
SIB Events (count)	7	72	6	7	21	14	127	3	1	4	0	0	131
Num Per 1,000 Pt Days	1.71	15.08	1.71	1.59	5.49	1.80	4.47	0.50	0.50	0.50	0.00	0.00	3.14
Total Physical Restraint Hours													
Total Physical Restraint Hours	0.01	0.67	0.19	0.2	0.25	0.06	1.37	0.14	0.1	0.236		0.00	1.61
Num Per 1,000 Pt Days	0.00	0.14	0.05	0.05	0.07	0.01	0.05	0.02	0.05	0.03		0.00	0.04
Medication Measures													
Benzodiazepines	88	85	50	27	68	70	388	7	3	10		7	405
Percentage of Census	0.67	0.54	0.44	0.19	0.54	0.28	0.42	0.04	0.05	0.04		0.11	0.30
Multiple Atypicals													
Multiple Atypicals	31	48	7	37	59	67	249	8	13	21		0	270
Percentage of Census	0.24	0.31	0.06	0.26	0.47	0.27	0.27	0.04	0.20	0.09		0.00	0.20
Typical- Atypical													
Typical- Atypical	38	57	48	58	22	115	338	57	22	79		0	417
Percentage of Census	0.29	0.36	0.42	0.41	0.18	0.46	0.37	0.31	0.34	0.32		0.00	0.31

Wellness Indicators

The National Association of State Mental Health Program Directors (NASMHPD) issued a report in October 2006 about mortality and morbidity in people with serious mental illness (SMI). According to Mental Health America's *Survey of People with Schizophrenia and Providers* (www.mentalhealthamerica.net), the NASMHPD report revealed that people with SMI die on average 25 years earlier than the general population. The major natural causes of death for people with SMI are heart disease, diabetes, respiratory disease and infectious disease. Many of the risk factors for these diseases are modifiable. Beginning June 2008, the state began compiling and comparing data on the number of tobacco users (Table 24) in our state hospitals.

Table 24 - Tobacco Users on Last Day of Month Civil and Long Term Care

Month	Tobacco Users	CLA	DAN	NOR	TOR	WAR	WER	Civil Total	LTC	System Total
Feb-20	Total Users	0	0	0	0	0	0	0	9	9
	% of Census	0%	0%	0%	0%	0%	0%	0%	7%	1%
Jun-20	Total Users	0	0	0	0	0	0	0	8	8
	% of Census	0%	0%	0%	0%	0%	0%	0%	6%	1%
Sep-20	Total Users	0	0	0	0	0	0	0	8	8
	% of Census	0%	0%	0%	0%	0%	0%	0%	6%	1%
Jan-21	Total Users	0	0	0	0	0	0	0	6	6
	% of Census	0%	0%	0%	0%	0%	0%	0%	5%	0%

Between July 2018 and December 2018 all six State Mental Hospitals became tobacco free campuses.

Table 25 - Reasons for Hospitalizations as the Result of an Incident, All Levels of Care

The Risk Management System requires that an incident report form be completed anytime a person is transported from a state hospital to an acute care hospital. This includes if the person was only seen in the emergency room, received diagnostic tests and/or was actually admitted. It does **not** include hospitalizations for a preplanned procedure, test or surgery.

Cause	CLA	DAN	NOR	TOR	WAR	WER	Count
Assault, Pt./Pt			2				2
Change in Medical Status-Transferred	2	7	2	6	8	21	46
Fall Type 1-Injury with treatment		2				1	3
Fall Type 2-No treatment needed				1			1
Indeterminate/Unconfirmed Cause of Injury		1					1
Other		5					5
Seizure		2					2
Self-Injurious behavior		1		1	1	1	4
Totals	2	18	4	8	9	23	64

Medication Measures

Beginning in September 2008 the OMHSAS Bureau of Community and Hospital Operations identified the following three medication measures for inclusion in this monthly report. The table information is compiled from the QS1 pharmacy software and reflects the unique count of the number of people served at each hospital on the last day of the month for each measure.

Table 26 - Benzodiazepines

Measure Definition: *Benzodiazepines refers to the number of unique patients served at each hospital, by level-of-care, who have an active, straight order for any benzodiazepine medication on the last day of each month.*

BZD								Forensic			S RTP	Sys
M/Y	Cl a	D an	N or	T or	W ar	W er	Total	N or	T or	C nt	T or	Total
Mar-20	89	79	66	29	57	70	390	6	5	11	10	411
Jun-20	93	79	59	30	56	77	394	8	9	17	9	420
Sep-20	92	79	52	26	61	81	391	12	5	17	7	415
Jan-21	88	85	50	27	68	70	388	7	3	10	7	405

Table 27 - Multiple Atypicals

Measure Definition: *Multiple Atypicals refers to the number of unique patients served at each hospital, by level-of-care, who have an active, straight order for two or more atypical antipsychotic medications on the last day of each month.*

Multiple Atypicals								Forensic			S RTP	Sys
M/Y	Cl a	D an	N or	T or	W ar	W er	Total	N or	T or	C nt	T or	Total
Mar-20	20	39	6	42	51	55	213	13	9	22	0	235
Jun-20	20	43	5	36	53	64	221	11	9	20	0	241
Sep-20	28	45	5	40	50	64	232	7	10	17	0	249
Jan-21	31	48	7	37	59	67	249	8	13	21	0	270

Table 28 - Typical-Atypical

Measure Definition: *Typical-Atypicals refers to the number of unique patients served at each hospital, by level-of-care, who have an active, straight order for a typical and an atypical antipsychotic medication on the last day of each month.*

Typical - Atypical								Forensic			S RTP	Sys
M/Y	Cl a	D an	N or	T or	W ar	W er	Total	N or	T or	C nt	T or	Total
Mar-20	36	47	47	60	27	127	344	67	29	96	0	440
Jun-20	32	48	48	67	41	119	355	66	35	101	0	456
Sep-20	41	47	47	66	29	123	353	60	30	90	0	443
Jan-21	38	57	48	58	22	115	338	57	22	79	0	417

Table 29 - STAT Medication Usage – Civil

Measure Definition: STAT medication are counted as psychiatric medications that have been administered. If two STAT medications are administered, it is counted as one event. Each STAT medication event is documented by “Route of Administration” and “Requested by”. This measure includes all levels of care.

CLARKS SUMMIT (FY 2020-21)							
Month	Total Number of STATs	Route of Admin			Requested by:		
		PO	IM	PEG Tube:	Indv	MD/DO	RN
Jan-21	51	42	9	0	19	27	5

DANVILLE (FY 2020-21)							
Month	Total Number of STATs	Route of Admin			Requested by:		
		PO	IM	Peg Tube:	Indv	MD/OD	RN
Jan-21	232	42	190	0	50	23	159

NORRISTOWN - CIVIL (FY 2020-21)							
Month	Total Number of STATs	Route of Admin			Requested by:		
		PO	IM	Peg Tube:	Indv	MD/DO	RN
Jan-21	86	29	57	0	11	8	67

TORRANCE - CIVIL (FY 2020-21)							
Month	Total Number of STATs	Route of Admin			Requested by:		
		PO	IM	Peg Tube:	Indv	MD/DO	RN
Jan-21	43	16	27	0	9	9	25

WARREN (FY 2020-21)							
Month	Total Number of STATs	Route of Admin			Requested by:		
		PO	IM	Peg Tube	Indv	MD/DO	RN
Jan-21	92	61	31	0	26	14	52

WERNERSVILLE (FY 2020-21)							
Month	Total Number of STATs	Route of Admin			Requested by:		
		PO	IM	Peg Tube:	Indv	MD/DO	RN
Jan-21	145	124	21	0	88	19	38

Table 30 - STAT Medication Usage – Forensic

NORRISTOWN - FORENSIC (FY 2020-21)								
Month	Total Number of STATs	Route of Admin			Requested by:			
		PO	IM	Peg Tube/othe	Indv	MD/DO	RN	UNK
Jan-21	158	35	123	0	10	23	119	6

TORRANCE - FORENSIC (FY 2020-21)							
Month	Total Number of STATs	Route of Admin			Requested by:		
		PO	IM	Peg Tube:	Indv	MD/DO	RN
Jan-21	43	16	27	0	7	12	24

Table 31 - STAT Medication Usage – ACT 21 (SRTP)

TORRANCE - ACT 21 (FY 2020-21)							
Month	Total Number of STATs	Route of Admin			Requested by:		
		PO	IM	Peg Tube:	Indv	MD/DO	RN
Jan-21	0	0	0	0	0	0	0