



pennsylvania

DEPARTMENT OF HUMAN SERVICES
OFFICE OF MENTAL HEALTH AND
SUBSTANCE ABUSE SERVICES



Pennsylvania State Hospital Risk Management Summary and Indicator Report

July 2016

Prepared by:
Christina Sterner, M.S. CPIE
Wernersville State Hospital
E-Mail: csterner@pa.gov

Contributors:
SMH CPIEs & PI Staff
Valerie Minnich, RPh
September 9, 2016

Introduction

The State Hospital Risk Management System defines an incident as any patient-related event that has the potential for, or which results in, a negative impact upon the quality of patient care or services, including injury or death of a person served in the state hospital system. Past reports can be found on the DHS website using the following link.

<http://www.dhs.pa.gov/publications/forproviders/statehospitalriskmanagementsummaryreports/>

The data dictionary for the measurement system was updated on October 1, 2008, and is available for review as attachments to OMHSAS Bulletin titled Management of Incidents: SI-815 Incident Reporting and Risk Management Policy and Procedural Change. (Available via bulletin search at <http://www.dhs.pa.gov/> .)

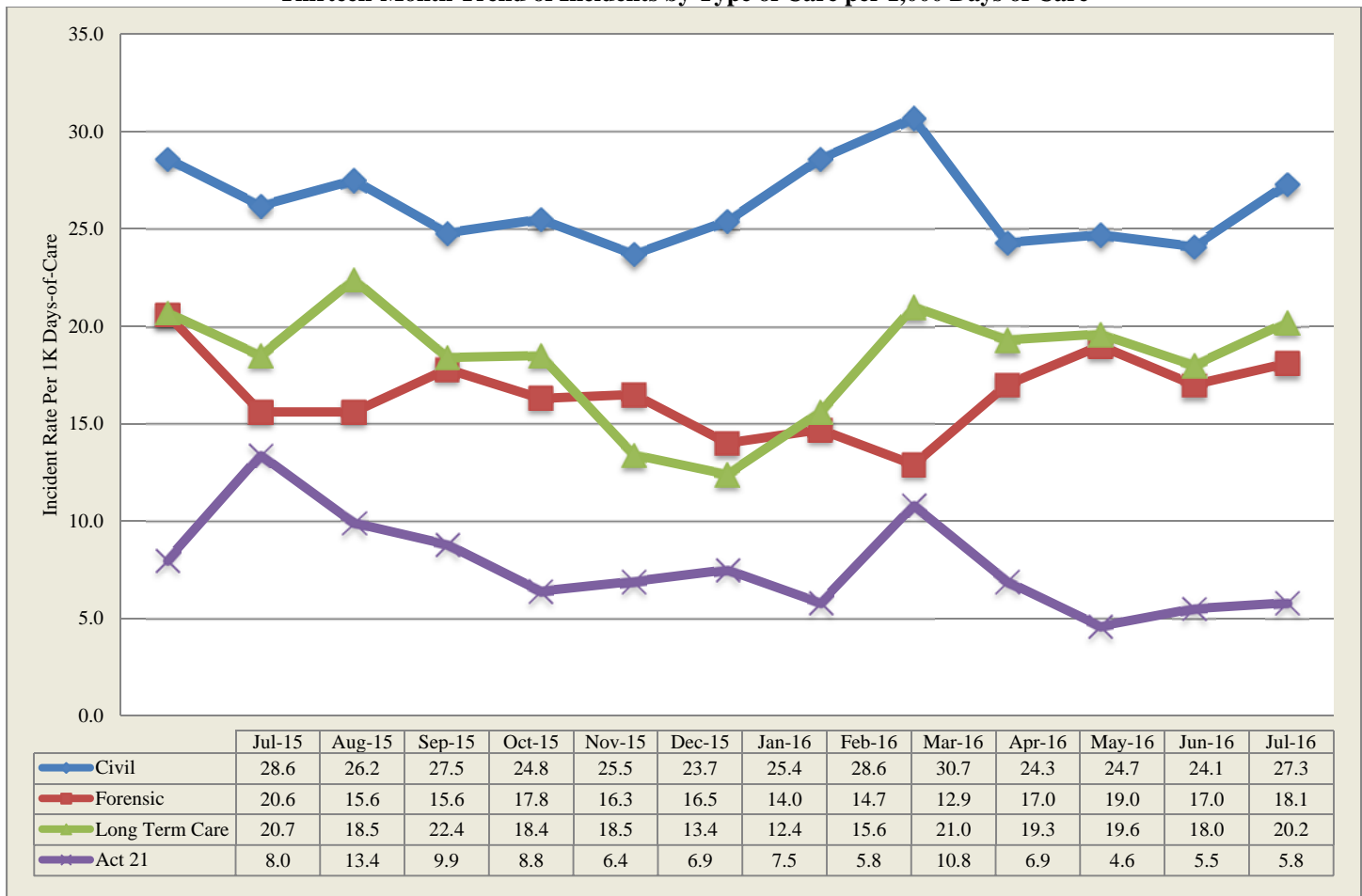
Table of Contents		
Indicator/Measure	Table	Page
Risk Management Indicators		
Census and Rates of Incidents	1	3
Thirteen-Month Trend of Incidents		3
Six-Month Summary of Selected Events		4
Category or Cause of Incidents: Civil	2	5
Primary Effect of Incidents: Civil	3	6
Category or Cause of Incidents: Forensic	4	7
Effect of Incidents: Forensic	5	7
Cause of Incidents: Long Term Care	6	8
Effect of Incidents: Long Term Care	7	8
Cause of Incidents: SRTP	8	9
Effect of Incidents: SRTP	9	9
13-Month Rate of Type 1 Falls per 1,000 Days of Care	10	10
13-Month Trend of Type 1 Falls		10
Hours of Seclusion Use	11	11
Number of Seclusion Events	12	11
Total Hours of Mechanical Restraint by Unit	13	11
Hours of Mechanical Restraint Use: 12 Months	14	11
Number of Mechanical Restraint Events: 12 Months	15	11
Hours of Physical Restraint Use by Unit	16	12
Hours of Physical Restraint Use: 12 Months	17	12
Number of Physical Restraint Events: 12 Months	18	12
24-Month Trend of Restraint and Seclusion Hours		13
Patient-to-Patient Assaults by Unit	19	14
13-Month Rate of Patient-to-Patient Assault Events with Injury per 1,000 Days-of-Care	20	14
Patient-to-Staff Assaults by Unit	21	15
13-Month Rate of Patient-to-Staff Assaults with Injury to Staff per 1,000 Days-of-Care	22	15
Risk Adjusted Table of Selected Safety Indicators	23	16
Wellness Indicators		
Tobacco Users	24	17
Diabetes	25	17
Reasons for Hospitalization as a Result of an Incident	26	17
Medication Use Indicators		
Benzodiazepines	27	18
Multiple Atypicals	28	18
Typical-Atypical	29	18

During **July 2016** a total of **1121** incident reports were completed by the state hospital system. Additional records addressing specific categories from the previous month were included on page 4 of this report. The following is a breakdown of incidents by individual facility and type of care:

Table 1 - Number of Incident Reports

	Census 7/31/16	Days Provided	Incidents	Per 1000 Days-of-Care
Clarks Summit	198	6159	143	23.2
Danville	157	4935	104	21.1
Norristown	121	3770	194	51.5
Torrance	182	5506	124	22.5
Warren	142	4366	102	23.4
Wernersville	258	7913	223	28.2
Total Civil	1058	32649	890	27.3
Forensic				
Norristown	132	4024	80	19.9
Torrance	99	3065	48	15.7
Total Forensic	231	7089	128	18.1
Act 21				
Act 21	53	1554	9	5.8
Total Act 21	53	1554	9	5.8
Long Term Care				
South Mountain	150	4656	94	20.2
Total L. T. C.	150	4656	94	20.2
Total	1492	45948	1121	24.4

Thirteen-Month Trend of Incidents by Type of Care per 1,000 Days of Care



*Note: Rules regarding the reporting of incidents involving patient-to-patient assaults require a separate incident report form on each person involved in an altercation. This includes both the aggressor, when known and any other person involved. The numbers reported above reflect the monthly, total number of SI-815 reports coded as Patient-to-Patient Assaults and not the actual number of altercations.

The following table is refreshed each month from the most recent data (recent 6 month period) available from the State Hospital System RM database.

CATEGORY	Count	Feb 16	Mar 16	Apr 16	May 16	Jun 16	Jul 16
Accident-Injury	350	67	50	58	56	58	61
Adverse Drug Reaction	12	3	2	2	3	2	
Aggression	644	129	116	89	99	92	119
Aggression Type 2/Early Medication Order	1					1	
Airway Obstruction type 1 Intervention	24	4	4	5	5	5	1
Airway Obstruction type 2 No Intervention	11	2	4	1		1	3
Alcohol Use/Possession/Suspected or Confirmed	1					1	
Alleged Nonconsensual Sexual Activity	8	6				2	
Alleged Pt. Abuse	52	17	6	4	5	7	13
Assault, Pt./Pt	1668	247	332	265	293	263	268
Assault, Pt./Staff	461	76	104	73	72	57	79
Assault: Patient/Other	2				1	1	
AWOL/UA	48	4	5	11	6	11	11
AWOL-Attempt	33	3	13	1	2	5	9
AWOL-Late	37	3	8	5	1	8	12
Change in Medical Status-Stabilized	52	14	8	13	7	3	7
Change in Medical Status-Transferred	265	41	58	40	45	33	48
Charged post admit/crime committed prior to admit	7		3	1	2	1	
Charged with alleged crime on hospital grounds	1	1					
Communications Sys. Misuse	38	9	8	2	5	9	5
Community Incident	4		1		1	2	
Contraband Possession	77	10	15	14	10	13	15
Fall Type 1-Injury with treatment	392	47	78	51	58	66	92
Fall Type 2-No treatment needed	698	116	115	112	109	122	124
Family Concern	3		1	1	1		
Fire Setting	1	1					
Illicit Substance Use/Possession	3		1		1	1	
Indeterminate/Unconfirmed Cause of Injury	145	14	28	21	21	24	37
Medication Error	87	15	16	13	16	19	8
Missing Property	45	7	7	7	9	4	11
Other	409	81	78	63	52	65	70
Patient Complaint	2		2				
Procedural Treatment Error	26	6	3	7	3	5	2
Property Damage	86	13	10	15	19	9	20
Seizure	28	6	4	3	6	4	5
Self-Injurious behavior	649	120	131	96	126	77	99
Sexual Behavior	94	19	14	14	14	16	17
Smoking Violation	47	5	11	9	11	2	9
Substantiated Patient Abuse	5				2	1	2
Suicide Attempt	12	1	1	4	3	1	2
Suicide threat/plan	20	5	4	4	2	3	2
Theft	37	9	9	6	4	7	2
Unknown	6	1	1			3	1
Unsubstantiated Nonconsensual Sexual Activity	1					1	
Unsubstantiated Patient Abuse	8	1	3	1	2		1

Table 2 - Category or Cause of Incidents in the Civil Hospitals

Primary Cat #	CLA	DAN	NOR	TOR	WAR	WER	Count
Accident-Injury	5	3	2	6	1	8	25
Aggression	13	4	4	14	20	31	86
Airway Obstruction type 1 Intervention			1				1
Airway Obstruction type 2 No Intervention		1			1		2
Alleged Pt. Abuse	4		4			4	12
Assault, Pt./Pt	36	8	88	16	10	41	199
Assault, Pt./Staff	4	14	17	5	6	19	65
AWOL/UA	4	1			2	4	11
AWOL-Attempt			5		1	1	7
AWOL-Late		5	1	2	2	2	12
Change in Medical Status-Stabilized	3		1			2	6
Change in Medical Status-Transferred	9	6	3	10	1	11	40
Communications Sys. Misuse	1	4					5
Contraband Possession	1	2	2	1	3	5	14
Fall Type 1-Injury with treatment	10	11	3	19	4	17	64
Fall Type 2-No treatment needed	23	14	8	14	14	22	95
Indeterminate/Unconfirmed Cause of Injury	7	1	4	11		5	28
Medication Error		3	1				4
Missing Property	1		3		2	4	10
Other	14	3	8	13	10	6	54
Property Damage	1	1	6	1	1	8	18
Seizure	2		1			1	4
Self-Injurious behavior	5	19	24	5	16	26	95
Sexual Behavior				6	7	3	16
Smoking Violation			6	1		2	9
Substantiated Patient Abuse		2					2
Suicide Attempt		1					1
Suicide threat/plan		1				1	2
Theft			2				2
Unknown					1		1
Totals	143	104	194	124	102	223	890

Table 3 - Primary Effect of Incidents in the Civil Hospitals

Primary effect	CLA	DAN	NOR	TOR	WAR	WER	Count
Unknown				1			1
Abrasion/scrape/scratch/hematoma	15	12	14	15	9	21	86
Allergic reaction						1	1
Bite-Animal				1			1
Bite-Human			1			2	3
Bite-Insect	1					1	2
Blister	1			2		1	4
Body System Illness	7			2		2	11
Bruise/contusion/dicoloration	4	1	4	9	4	10	32
Burn/Scald			1			1	2
Cellulitis				3			3
Death	3						3
Edema/swelling		2	1	7	2	1	13
Emesis				1			1
Epistaxis		1	1				2
Erythema/redness	1	1	2	6	1	4	15
Fever			1	1			2
Fracture		2					2
Ingestion of foreign body	1	4		2		9	16
Laceration: NO sutures/staples/steri-strips	2	1	7	5		3	18
Laceration: with steristrips/glue	2			2			4
Laceration: with sutures/staples	2						2
Lethargy	1					2	3
No Injury/NA	92	71	151	55	75	149	593
Other		4	8	6	4	5	27
Pain unspecified			1			2	3
Pain, Specified	5	4		4	5	4	22
Puncture/stab wound	2		1				3
Respiratory Distress	2				1	3	6
Seizure			1			2	3
Syncopal episode		1		2			3
Unconscious/Unresponsive	2				1		3
Totals	143	104	194	124	102	223	890

Table 4 - Cause of Incidents in the Forensic Units Category or Cause of Incidents in the Forensic Service by Unit

Primary Cat #	NSH							TSH					Sys
	51A1	51A2	51B1	51B2	51C1	51C2	Total	FB3	FB4	FC1	FC2	Total	Count
Accident-Injury	2						2	1				1	3
Aggression			11	2		1	14		2	7	4	13	27
Airway Obstruction type 2 No Intervention	1						1					0	1
Alleged Pt. Abuse						1	1					0	1
Assault, Pt./Pt	2	6	5	8	5	4	30	8		13		21	51
Assault, Pt./Staff	1	1	2	1		2	7	2		1	1	4	11
AWOL-Attempt	1	1					2					0	2
Change in Medical Status-Stabilized			1				1					0	1
Change in Medical Status-Transferred			1	1	1	1	4					0	4
Contraband Possession		1					1					0	1
Fall Type 1-Injury with treatment			1	3		1	5	1	1	1		3	8
Fall Type 2-No treatment needed			2	3	1		6	2				2	8
Indeterminate/Unconfirmed Cause of Injury							0	1				1	1
Other	1	1			1		3	1				1	4
Property Damage	2						2					0	2
Sexual Behavior							0			1		1	1
Suicide Attempt		1					1					0	1
Unsubstantiated Patient Abuse							0				1	1	1
Totals	10	11	23	18	8	10	80	16	3	23	6	48	128

Table 5 - Effect of Incidents in the Forensic Service by Unit

EFFECT	NSH							TSH					Sys
	51A1	51A2	51B1	51C1	51C2	51B2	Total	FB3	FB4	FC1	FC2	Total	Count
Abrasion/scrape/scratch/hematoma	2				4		6	3	1	2		6	12
Bruise/contusion/discoloration		1					1	1			1	2	3
Edema/swelling							0	1				1	1
Epistaxis				1			1					0	1
Erythema/redness							0	1		1		2	2
Laceration: NO sutures/staples/steri-strips		1	1			2	4					0	4
Muscle pull/strain/sprain							0	1		1		2	2
No Injury/NA	7	9	20	4	4	14	58	8	2	19	5	34	92
Other			1	1		1	3	1				1	4
Pain unspecified				1		1	2					0	2
Pain, Specified	1			1	1		3					0	3
Syncopal episode					1		1					0	1
Unconscious/Unresponsive			1				1					0	1
Totals	10	11	23	8	10	18	80	16	3	23	6	48	128

Table 6 -Cause of Incidents in the Long Term Care Facility

Cause	3A	3B	5A	6A	6B	Count
Accident-Injury	2	8	4	7	6	27
Aggression		2	2			4
Assault, Pt./Pt	2	2	2	4		10
Assault, Pt./Staff					1	1
Change in Medical Status-Transferred					1	1
Fall Type 1-Injury with treatment	3	7	1	2	3	16
Fall Type 2-No treatment needed	2	3	2	1	3	11
Indeterminate/Unconfirmed Cause of Injury	4	1	1	2		8
Medication Error			2	1		3
Other	2	1	1	2	2	8
Procedural Treatment Error		1			1	2
Self-Injurious behavior	1	1			1	3
Totals	16	26	15	19	18	94

Table 7 - Effect of Incidents in the Long Term Care Facility

EFFECT	3A	3B	5A	6A	6B	Count
Abrasion/scrape/scratch/hematoma	3	7	2	4	5	21
Blister	2	1		1		4
Body System Illness				1	1	2
Bruise/contusion/discoloration	5	1	1	4	2	13
Death					1	1
Edema/swelling			1	1		2
Erythema/redness		4	1	1	2	8
Fracture				1		1
Laceration: NO sutures/staples/steri-strips	1	3	1	2		7
Laceration: with steristrips/glue		2			1	3
No Injury/NA	4	6	7	3	6	26
Pain unspecified	1					1
Pain, Specified		1	2	1		4
Skin Irritation/Rash		1				1
Totals	16	26	15	19	18	94

Act-21-Sexual Responsibility & Treatment Program at Torrance State Hospital

In July 2003, the Pennsylvania Legislature enacted Act 21 for adjudicated youth, aging out of the juvenile justice system who have a "mental abnormality" that renders them unable to control their violent sexual impulses. The Act mandates the state to provide mental health and sex-offense specific treatment to an identified population that had been adjudicated of certain sex crimes, received treatment in a juvenile program, yet remains a significant risk to sexually re-offend after reaching the age of 21, an age when oversight by the juvenile justice system typically ends. The Act requires the referral of such individuals who have committed these specific crimes to the Pennsylvania Sexual Offenders Assessment Board (SOAB) ninety days prior to their 20th birthday for purposes of determining if the individual has "serious difficulty in controlling sexually violent behavior." If so determined, a petition for a mental health hearing will be made for determination of civil commitment to the Sexual Responsibility and Treatment Program (SRTP) on the grounds of Torrance State Hospital. On July 1, 2006 the operation of this program transferred from an independent contractor to the Torrance State Hospital.

Table 8 - Cause of Incidents in the Sexual Responsibility and Treatment Program

Cause	TOR	Count
Accident-Injury	4	4
Aggression	2	2
Assault, Pt./Staff	1	1
Medication Error	1	1
Self-Injurious behavior	1	1
Totals	9	9

Table 9 - Effect of Incidents in the Sexual Responsibility and Treatment Program

Primary effect	TOR	Count
Abrasion/scrape/scratch/hematoma	3	3
Erythema/redness	1	1
Ingestion of foreign body	1	1
No Injury/NA	4	4
Totals	9	9

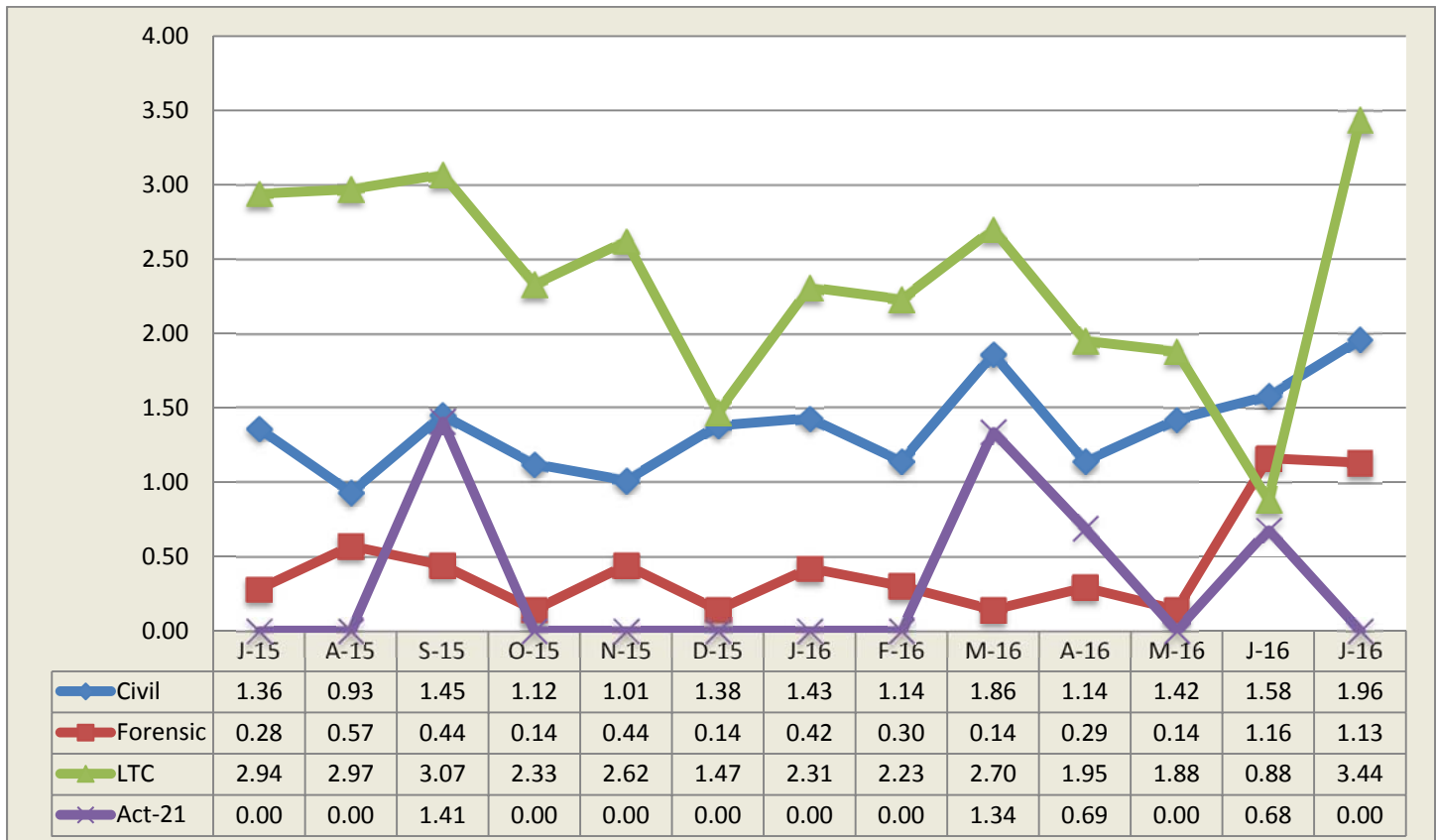
Falls

Falls within the state hospital risk management system are divided into two categories, type 1 and type 2, with the need for medical intervention or lack thereof defining the difference. The following data relates to falls, type 1 which are defined as an involuntary descent to a lower position, excluding seizures, that is witnessed or reported and requires medical intervention.

Table 10 - 13-Month Rate of Type 1 Falls Per 1,000 Days-of-Care

M/Year	Civil Hospital							Forensic			A21	LTC	Sys Avg
	Cl	Dan	Nor	Tor	War	Wer	Ttl	Nor	Tor	Total	A21	SMRC	
Jul-15	1.27	1.96	1.28	0.53	2.12	1.24	1.36	0.50	0.00	0.28	0.00	2.94	1.32
Aug-15	1.12	1.36	0.52	0.38	0.85	1.12	0.93	0.49	0.69	0.57	0.00	2.97	1.06
Sep-15	1.82	1.82	1.37	0.00	1.30	2.06	1.45	0.76	0.00	0.44	1.41	3.07	1.46
Oct-15	1.14	0.78	1.08	0.91	1.31	1.38	1.12	0.25	0.00	0.14	0.00	2.33	1.06
Nov-15	1.35	0.62	1.12	1.15	0.70	1.04	1.01	0.26	0.69	0.44	0.00	2.62	1.06
Dec-15	1.98	1.20	0.53	1.64	1.14	1.40	1.38	0.00	0.34	0.14	0.00	1.47	1.16
Jan-16	1.62	1.00	1.88	0.54	0.45	2.54	1.43	0.74	0.00	0.42	0.00	2.31	1.32
Feb-16	0.86	1.52	0.86	0.38	0.96	1.87	1.14	0.52	0.00	0.30	0.00	2.23	1.09
Mar-16	1.79	2.09	0.53	3.08	1.55	1.75	1.86	0.00	0.34	0.14	1.34	2.70	1.67
Apr-16	1.87	0.42	1.11	1.12	0.92	1.17	1.14	0.50	0.00	0.29	0.69	1.95	1.08
May-16	0.98	1.62	0.84	2.96	0.22	1.53	1.42	0.24	0.00	0.14	0.00	1.88	1.22
Jun-16	1.48	1.90	0.00	1.69	1.62	2.13	1.58	2.03	0.00	1.16	0.68	0.88	1.42
Jul-16	1.48	2.23	0.80	3.45	0.92	2.15	1.96	1.24	0.98	1.13	0.00	3.44	1.92

13-Month Trend of Type 1 Falls by Type of Care per 1,000 Days-of-Care



State Hospital Use of Seclusion

Civil and Forensic

Data on seclusion use for psychiatric reasons includes the civil and forensic populations and is reported for both monthly and yearly totals.

Table 11 - Hours of Seclusion Use, Monthly Totals for Past Year

No Use of Seclusion in PA State Hospital system since July 2013

Table 12 - Number of Seclusion Events, Monthly Totals for Past Year

No Use of Seclusion in PA State Hospital system since July 2013

State Hospital Use of Mechanical Restraint

Civil and Forensic

Data on mechanical restraint use for psychiatric reasons includes the forensic and civil populations and is reported for both monthly and yearly totals.

Table 13 - Total Hours of Mechanical Restraint Use by Hospital and Unit In Month

No use of Mechanical Restraint in July 2016

Table 14 - Hours of Mechanical Restraint Use, Monthly Totals for Past Year

ABV	Total	Aug_15	Sep_15	Oct_15	Nov_15	Dec_15	Jan_16	Feb_16	Mar_16	Apr_16	May_16	Jun_16	Jul_16
NOR	0.42	0.00	0.42	0.00	0.00	0.00	0.00	0.00	0.00	0.00	0.00	0.00	0.00

Table 15 - Number of Mechanical Restraint Events, Monthly Totals for Past Year

ABV	Total	Aug_15	Sep_15	Oct_15	Nov_15	Dec_15	Jan_16	Feb_16	Mar_16	Apr_16	May_16	Jun_16	Jul_16
NOR	1	0	1	0	0	0	0	0	0	0	0	0	0

State Hospital Use of Physical Holds

Data on physical holds use for psychiatric reasons includes all level of care populations and is reported for both monthly and yearly totals. Physical hold events lasting less than 60 seconds are reflected as 0.00 hours.

Table 16 - Hours of Physical Holds (Restraint) Used by Hospital & Unit

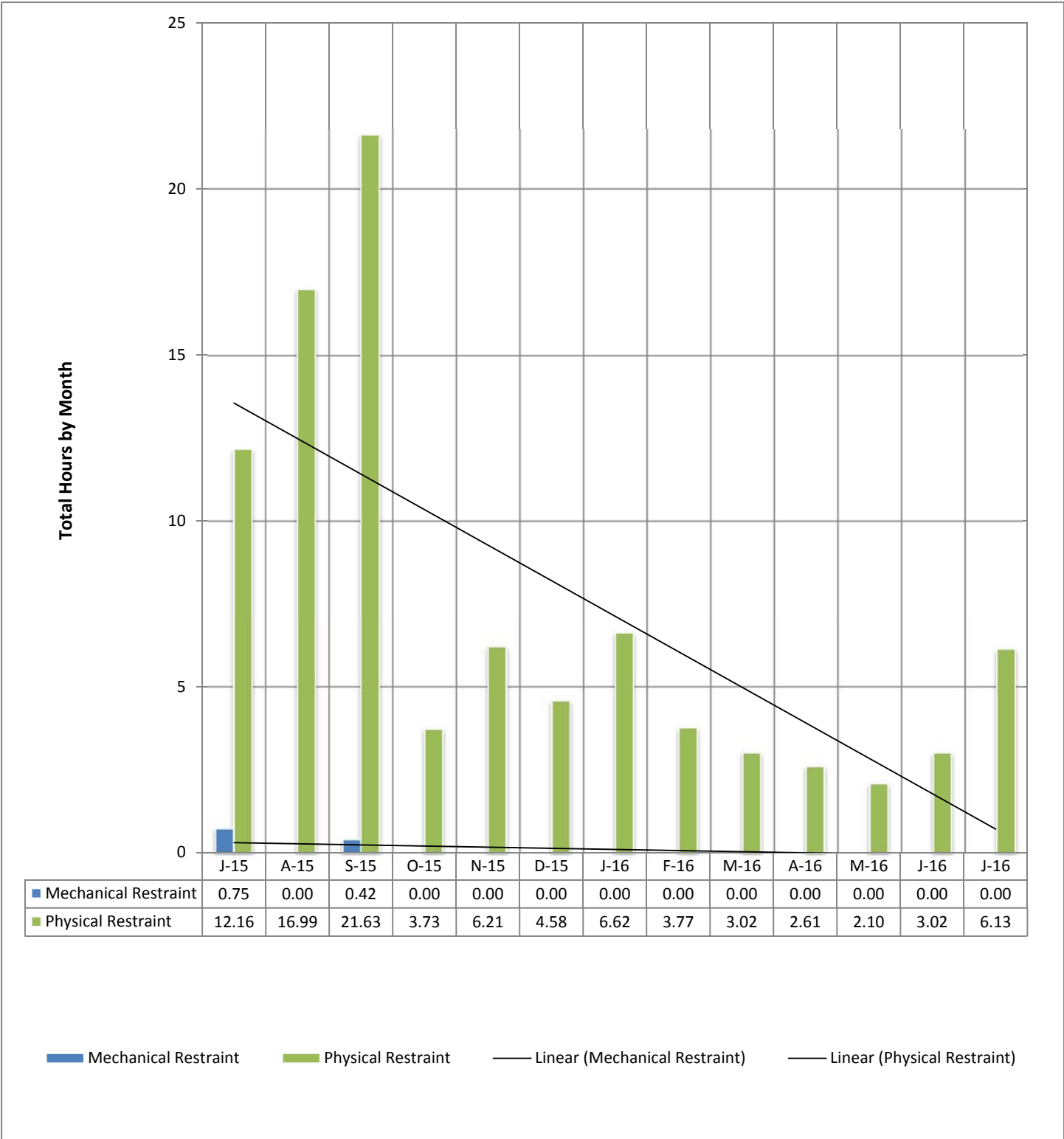
ABV	WARD	Total		ABV	WARD	Total		ABV	WARD	Total
NOR	01A1	1.63		TOR	FB4	0.17		NOR	51A2	0.07
WAR	3IF	0.83		TOR	064	0.17		WER	34-4	0.07
NOR	10A1	0.57		NOR	10A2	0.16		NOR	51B1	0.06
DAN	312	0.38		CLA	3	0.13		NOR	51A1	0.02
TOR	FC2	0.35		WER	35-2	0.11		NOR	10C1	0.02
CLA	7	0.31		TOR	014	0.08		WAR	3SW	0.02
TOR	013	0.30		TOR	024	0.08		WER	34-3	0.01
TOR	061	0.25		TOR	FB3	0.08		DAN	311	0.01
WER	37-1	0.18		NOR	51C2	0.08		NOR	51C1	0.01

Table 17 - Hours of Physical Holds (Restraint) Use, Monthly Totals for Past Year

ABV	Total	Aug_15	Sep_15	Oct_15	Nov_15	Dec_15	Jan_16	Feb_16	Mar_16	Apr_16	May_16	Jun_16	Jul_16
CLA	4.69	0.36	0.96	0.18	0.20	0.19	0.41	0.87	0.28	0.21	0.41	0.18	0.44
DAN	2.58	0.00	0.03	0.05	0.25	0.20	0.47	0.39	0.11	0.27	0.08	0.34	0.39
NOR	11.83	1.28	1.39	0.63	0.55	0.41	1.32	1.21	1.10	0.28	0.36	0.71	2.60
TOR	31.73	5.40	5.32	1.58	4.23	3.08	3.97	1.08	1.25	1.88	0.88	1.57	1.48
WAR	3.79	0.42	0.33	0.40	0.30	0.15	0.65	0.00	0.13	0.07	0.33	0.16	0.85
WER	26.13	9.53	13.17	1.00	0.68	0.54	0.01	0.22	0.17	0.32	0.08	0.05	0.36
Total	80.75	16.99	21.20	3.84	6.21	4.58	6.82	3.76	3.02	3.03	2.14	3.02	6.12

Table 18 - Number of Physical Holds (Restraint) Events, Monthly Totals for Past Year

ABV	Total	Aug_15	Sep_15	Oct_15	Nov_15	Dec_15	Jan_16	Feb_16	Mar_16	Apr_16	May_16	Jun_16	Jul_16
CLA	129	11	25	8	7	8	12	12	7	9	10	6	14
DAN	58	0	2	2	9	2	7	8	5	8	7	4	4
NOR	378	30	40	35	25	21	40	33	41	13	32	27	41
TOR	149	16	9	11	24	23	12	6	10	10	7	8	13
WAR	43	4	1	6	2	4	8	0	3	2	5	4	4
WER	94	14	23	6	7	7	1	7	5	9	6	1	8
Total	851	75	100	68	74	65	80	66	71	51	67	50	84



Assaults

Assaults within the state hospital system are defined as any aggressive act by a patient, involving physical contact that may or may not result in injury. Assaults can be directed at a peer, staff or any other individual. The system was designed to require an incident report (form SI-815) on any patient involved in a physical altercation regardless of who may have started the assault. Therefore, every patient-to-patient altercation will result in at least two incident reports.

Table 19 - Patient-to-Patient Assaults by Unit, All Levels of Care

ABV	WARD	Cnt		ABV	WARD	Cnt		ABV	WARD	Cnt
NOR	10A1	43		CLA	3	5		DAN	312	2
CLA	7	25		NOR	51B1	5		NOR	01A1	2
NOR	01C1	24		TOR	021	5		SMO	5A	2
TOR	FC1	13		NOR	51C1	5		DAN	212	2
NOR	10A2	13		DAN	311	4		NOR	51A1	2
WER	37-2	8		CLA	5	4		TOR	023	2
NOR	51B2	8		NOR	51C2	4		SMO	3A	2
TOR	FB3	8		WER	34-2	4		SMO	3B	2
WER	34-3	8		SMO	6A	4		CLA	2	2
WAR	IBE	8		WER	37-4	4		WER	35-3	1
WER	34-4	7		WAR	3IM	4		WER	35-2	1
NOR	51A2	6		TOR	014	3		WAR	3IF	1
NOR	10C1	6		WAR	3SW	3		WAR	2SW	1
TOR	013	6		WER	35-4	2		WAR	3NM	1
WER	37-1	6								

Table 20 - Rate of Patient-to-Patient Assaults Events with Patient Injury per 1,000 Days-of-Care

Pt.-to-Pt. Assault w/ any Injury	Civil							Forensic			S RTP
	Cla	Dan	Nor	Tor	War	Wer	Tot.	Nor	Tor	Tot.	S RTP
Jul-15	0.95	0.20	2.31	1.07	0.42	1.86	1.16	4.97	1.98	3.69	0.00
Aug-15	0.32	0.58	1.83	1.14	0.64	0.99	0.87	3.17	1.39	2.43	0.71
Sep-15	0.50	1.21	3.56	0.19	0.65	1.16	1.08	4.54	1.04	3.07	0.71
Oct-15	1.30	1.17	2.42	1.64	0.22	1.76	1.42	4.45	2.31	3.53	0.68
Nov-15	1.35	0.82	3.08	0.38	0.23	1.43	1.17	3.35	2.75	3.09	0.00
Dec-15	0.99	0.40	2.39	0.73	0.46	1.78	1.13	2.75	1.01	2.00	0.69
Jan-16	0.81	0.80	1.88	1.44	0.68	0.89	1.04	5.90	0.99	3.81	0.00
Feb-16	0.35	0.65	4.57	0.57	0.00	2.40	1.36	3.91	0.72	2.58	0.00
Mar-16	1.63	2.30	3.45	0.91	1.33	1.75	1.80	2.94	0.67	1.99	0.00
Apr-16	0.68	1.27	3.90	0.94	0.69	1.43	1.36	3.50	3.05	3.31	0.00
May-16	0.33	1.62	2.79	1.48	0.66	1.28	1.26	3.16	0.67	2.11	0.00
Jun-16	0.00	1.05	5.81	0.94	1.15	1.46	1.49	3.05	0.34	1.89	0.00
Jul-16	0.97	0.00	3.45	1.09	0.69	1.01	1.10	1.74	1.96	1.83	0.00

Table 21 - Patient-to-Staff Assault Events by Unit, All Levels of Care

ABV	WARD	Cnt		ABV	WARD	Cnt		ABV	WARD	Cnt
NOR	01C1	7		WAR	3SW	2		SMO	6B	1
DAN	311	7		WER	34-2	2		TOR	013	1
NOR	10A1	6		DAN	210	2		TOR	024	1
WER	35-2	5		NOR	51C2	2		TOR	062	1
WER	34-4	5		WER	37-2	2		TOR	063	1
DAN	211	3		TOR	014	2		TOR	FC1	1
NOR	10A2	2		NOR	51A1	1		TOR	FC2	1
WER	37-4	2		NOR	51A2	1		WAR	2NM	1
NOR	01A1	2		DAN	212	1		WAR	31F	1
TOR	FB3	2		CLA	7	1		WER	34-3	1
NOR	51B1	2		CLA	6	1		WER	37-1	1
CLA	3	2		DAN	312	1		WER	37-3	1
WAR	3IM	2		NOR	51B2	1		TOR	012	1

Table 22 - Rate of Patient-to-Staff Assault Events with Injury to Staff per 1,000 Days-of-Care

Pt/Staff Assault w/ Staff Inj per 1K days	Civil							Forensic			SRTP
	Cl	Dan	Nor	Tor	War	Wer	Tot.	Nor	Tor	Tot.	SRTP
Jul-15	0.64	0.20	0.51	0.36	0.21	1.74	0.71	0.25	0.66	0.43	0.67
Aug-15	0.00	0.19	0.52	0.76	0.00	0.99	0.45	0.00	0.35	0.14	2.12
Sep-15	0.99	0.20	0.27	0.76	0.00	1.03	0.62	0.00	0.00	0.00	0.00
Oct-15	0.00	0.20	1.08	0.73	0.44	0.13	0.36	0.25	0.66	0.42	0.00
Nov-15	0.17	0.41	2.52	1.15	0.46	1.56	1.01	0.26	0.34	0.29	0.71
Dec-15	0.00	0.00	0.27	0.18	0.46	1.40	0.46	0.50	1.01	0.72	0.00
Jan-16	0.32	0.20	0.54	0.18	1.13	0.76	0.52	0.74	0.99	0.85	0.00
Feb-16	0.52	1.09	2.28	0.19	0.96	0.93	0.91	0.78	0.00	0.45	0.00
Mar-16	0.98	0.21	1.86	0.72	0.44	0.88	0.82	0.00	1.35	0.57	0.00
Apr-16	0.34	0.42	0.28	0.19	0.23	0.91	0.44	0.25	0.68	0.43	0.00
May-16	0.33	0.20	1.39	0.55	0.00	0.77	0.52	0.24	0.33	0.28	0.00
Jun-16	0.33	0.00	1.11	0.56	1.15	0.40	0.54	0.00	0.34	0.15	0.00
Jul-16	0.16	0.20	1.33	0.73	0.23	0.63	0.52	0.00	0.00	0.15	0.64

Table 23 - Risk Adjusted Safety Indicators

Jul-16	Civil							Forensic					
Month	Cla	Dan	Nor	Tor	War	Wer	C. Total	Nor	Tor	F. Total	LTC	SRTP	System
Patient Days	6159	4935	3770	5506	4366	7913	32649	4024	3065	7089	4656	1551	45945
Census	198	157	121	182	142	258	1058	132	99	231	150	53	1492
Safety Indicators													
Type 1 Falls (count)	10	11	3	19	4	17	64	5	3	8	16	0	88
Num Per 1,000 Pt Days	1.62	2.23	0.80	3.45	0.92	2.15	1.96	1.24	0.98	1.13	3.44	0.00	1.92
Total Falls (count)	33	25	11	33	18	39	159	11	5	16	27	0	202
Num Per 1,000 Pt Days	5.36	5.07	2.92	5.99	4.12	4.93	4.87	2.73	1.63	2.26	5.80	0.00	4.40
PT:PT Assaults w/Injury(count)	6	0	13	6	3	8	36	7	6	13	5	0	54
Num Per 1,000 Pt Days	0.97	0.00	3.45	1.09	0.69	1.01	1.10	1.74	1.96	1.83	1.07	0.00	1.18
Total PT:PT Assault Events (count)	36	8	88	16	10	41	199	30	21	51	10	0	260
Num Per 1,000 Pt Days	5.85	1.62	23.34	2.91	2.29	5.18	6.10	7.46	6.85	7.19	2.15	0.00	5.66
PT:Staff Assaults w/Injury(count)	1	1	5	4	1	5	17	0	0	0	1	1	19
Num Per 1,000 Pt Days	0.16	0.20	1.33	0.73	0.23	0.63	0.52	0.00	0.00	0.00	0.21	0.64	0.41
Total PT:Staff Assault Events (count)	4	14	17	5	6	19	65	7	4	11	1	1	78
Num Per 1,000 Pt Days	0.65	2.84	4.51	0.91	1.37	2.40	1.99	1.74	1.31	1.55	0.21	0.64	1.70
SIB Events (count)	5	19	24	5	16	26	95	0	0	0	3	1	99
Num Per 1,000 Pt Days	0.81	3.85	6.37	0.91	3.66	3.29	2.91	0.00	0.00	0.00	0.64	0.64	2.15
Total Physical Restraint Hours	0.44	0.39	2.37	0.47	0.85	0.36	4.877	0.23	0.6	0.826		0.42	6.1201
Num Per 1,000 Pt Days	0.07	0.08	0.63	0.08	0.19	0.05	0.15	0.06	0.20	0.12		0.27	0.13
Medication Measures													
Benzodiazepines	105	83	68	94	81	109	540	27	15	42		10	592
Percentage of Census	0.53	0.53	0.56	0.52	0.57	0.42	0.51	0.20	0.15	0.18		0.19	0.40
Multiple Atypicals	21	47	11	71	41	45	236	12	18	30		0	266
Percentage of Census	0.11	0.30	0.09	0.39	0.29	0.17	0.22	0.09	0.18	0.13		0.00	0.18
Typical- Atypical	47	63	57	76	27	110	380	41	49	90		0	470
Percentage of Census	0.24	0.40	0.47	0.42	0.19	0.43	0.36	0.31	0.49	0.39		0.00	0.32

Wellness Indicators

The National Association of State Mental Health Program Directors (NASMHPD) issued a report in October 2006 about mortality and morbidity in people with serious mental illness (SMI). According to Mental Health America's *Survey of People with Schizophrenia and Providers* (www.mentalhealthamerica.net), the NASMHPD report revealed that people with SMI die on average 25 years earlier than the general population. The major natural causes of death for people with SMI are heart disease, diabetes, respiratory disease and infectious disease. Many of the risk factors for these diseases are modifiable. Beginning June 2008, the state began compiling and comparing data on the number of tobacco users (Table 24) in our state hospitals. Beginning July 2008, the state began compiling and comparing data on the number of consumers who have a diagnosis of diabetes (Table 25).

Table 24 - Tobacco Users on Last Day of Month Civil and Long Term Care

Month	Tobacco Users	CLA	DAN	NOR	TOR	WAR	WER	Civil Total	LTC	System Total
Aug-15	Total Users	98	60	71	62	85	78	454	10	464
	% of Census	48%	36%	58%	34%	56%	30%	42%	7%	31%
Dec-15	Total Users	97	52	72	65	75	78	439	10	449
	% of Census	49%	32%	60%	35%	53%	31%	41%	6%	30%
Mar-16	Total Users	100	53	70	82	86	78	469	11	480
	% of Census	51%	34%	58%	53%	59%	30%	44%	7%	32%
Jul-16	Total Users	108	54	68	70	74	78	452	10	462
	% of Census	55%	34%	56%	38%	52%	30%	43%	7%	31%

Table 25 - Diabetes (Data is for September 2015)

Sep-15	Civil Hospitals							Forensic Centers			A21	LTC	Sys
	Cl	Dan	Nor	Tor	War	Wer	Ttl	Nor	Tor	Total	A21	SMRC	
Patient Census	201	166	120	183	151	260	1081	131	96	227	51	152	1511
Count	31	28	20	35	28	63	205	15	11	26	0	40	271
% w/ Diabetes	15%	17%	17%	19%	19%	24%	19%	11%	11%	11%	0%	26%	18%

Table 26 - Reasons for Hospitalizations as the Result of an Incident, All Levels of Care

The Risk Management System requires that an incident report form be completed anytime a person is transported from a state hospital to an acute care hospital. This includes if the person was only seen in the emergency room, received diagnostic tests and/or was actually admitted. It does **not** include hospitalizations for a preplanned procedure, test or surgery.

Cause	CLA	DAN	NOR	SMO	TOR	WAR	WER	Count
Aggression							1	1
Airway Obstruction type 2 No Intervention					1			1
Alleged Pt. Abuse	1				1			2
Assault, Pt./Pt	1							1
AWOL/UA	1							1
Change in Medical Status-Stabilized	1							1
Change in Medical Status-Transferred	9	5	5	1	10	4	2	36
Fall Type 1-Injury with treatment							1	2
Indeterminate/Unconfirmed Cause of Injury							1	1
Other					2		1	3
Seizure	1							1
Self-Injurious behavior	1		2			1		4
Totals	15	5	11	1	12	7	3	54

Medication Measures

Beginning in September 2008 the OMHSAS Bureau of Community and Hospital Operations identified the following three medication measures for inclusion in this monthly report. The table information is compiled from the QS1 pharmacy software and reflects the unique count of the number of people served at each hospital on the last day of the month for each measure.

Table 27 - Benzodiazepines

Measure Definition: *Benzodiazepines refers to the number of unique patients served at each hospital, by level-of-care, who have an active, straight order for any benzodiazepine medication on the last day of each month.*

BZD M/Y								Forensic			SRTP	Sys
	Cla	Dan	Nor	Tor	War	Wer	Total	Nor	Tor	Cnt	Tor	Total
Sep-15	117	90	72	81	82	126	568	35	19	54	11	633
Dec-15	107	85	72	78	80	122	544	24	21	45	10	599
Mar-16	101	82	75	79	89	109	535	32	23	55	10	600
Jul-16	105	83	68	94	81	109	540	27	15	42	10	592

Table 28 - Multiple Atypicals

Measure Definition: *Multiple Atypicals refers to the number of unique patients served at each hospital, by level-of-care, who have an active, straight order for two or more atypical antipsychotic medications on the last day of each month.*

Multiple Atypicals M/Y								Forensic			SRTP	Sys
	Cla	Dan	Nor	Tor	War	Wer	Total	Nor	Tor	Cnt	Tor	Total
Sep-15	22	49	14	28	46	39	198	6	17	23	0	221
Dec-15	22	48	14	57	44	36	221	4	17	21	0	242
Mar-16	21	51	17	67	47	35	238	4	18	22	0	260
Jul-16	21	47	11	71	41	45	236	12	18	30	0	266

Table 29 - Typical-Atypical

Measure Definition: *Typical-Atypicals refers to the number of unique patients served at each hospital, by level-of-care, who have an active, straight order for a typical and an atypical antipsychotic medication on the last day of each month.*

Typical - Atypical M/Y								Forensic			SRTP	Sys
	Cla	Dan	Nor	Tor	War	Wer	Total	Nor	Tor	Cnt	Tor	Total
Sep-15	46	53	58	72	33	104	366	44	45	89	0	455
Dec-15	57	57	60	69	32	97	372	50	46	96	0	468
Mar-16	54	61	57	74	30	117	393	48	46	94	0	487
Jul-16	47	63	57	76	27	110	380	41	49	90	0	470