



pennsylvania

DEPARTMENT OF HUMAN SERVICES
OFFICE OF MENTAL HEALTH AND
SUBSTANCE ABUSE SERVICES



Pennsylvania State Hospital Risk Management Summary and Indicator Report

April 2018

Prepared by:
Christina Sterner, M.S. CPIE
Wernersville State Hospital
E-Mail: csterner@pa.gov
Contributors:
SMH CPIEs & PI Staff
Valerie Minnich, RPh
October 9, 2018

Introduction

The State Hospital Risk Management System defines an incident as any patient-related event that has the potential for, or which results in, a negative impact upon the quality of patient care or services, including injury or death of a person served in the state hospital system. Past reports can be found on the DHS website using the following link.

<http://www.dhs.pa.gov/publications/forproviders/statehospitalriskmanagementsummaryreports/>

The data dictionary for the measurement system was updated on October 1, 2008, and is available for review as attachments to OMHSAS Bulletin titled Management of Incidents: SI-815 Incident Reporting and Risk Management Policy and Procedural Change. (Available via bulletin search at <http://www.dhs.pa.gov/> .)

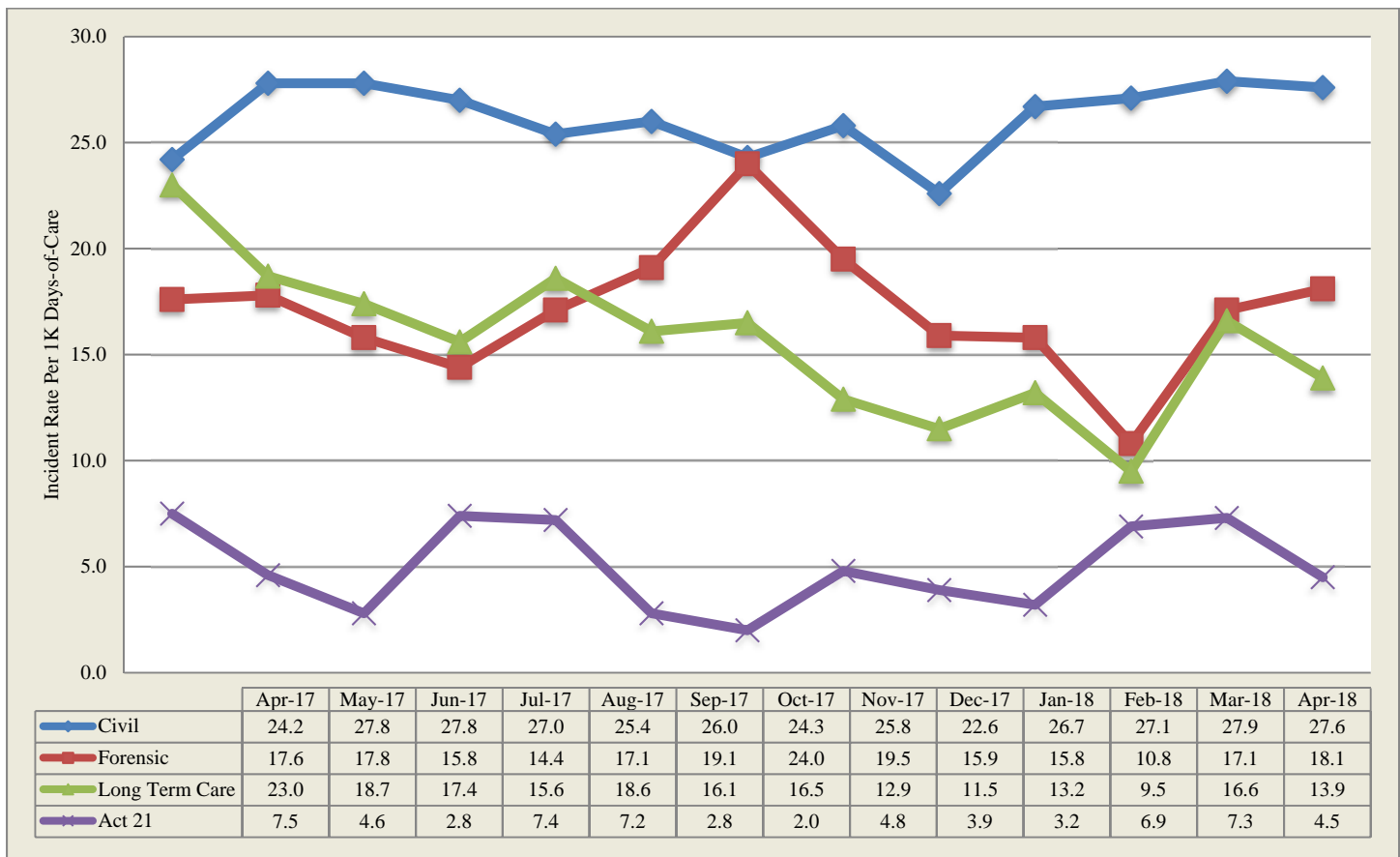
Table of Contents		
Indicator/Measure	Table	Page
Risk Management Indicators		
Census and Rates of Incidents	1	3
Thirteen-Month Trend of Incidents		3
Six-Month Summary of Selected Events		4
Category or Cause of Incidents: Civil	2	5
Primary Effect of Incidents: Civil	3	6
Category or Cause of Incidents: Forensic	4	7
Effect of Incidents: Forensic	5	7
Cause of Incidents: Long Term Care	6	8
Effect of Incidents: Long Term Care	7	8
Cause of Incidents: SRTP	8	9
Effect of Incidents: SRTP	9	9
13-Month Rate of Type 1 Falls per 1,000 Days of Care	10	10
13-Month Trend of Type 1 Falls		10
Hours of Seclusion Use	11	11
Number of Seclusion Events	12	11
Total Hours of Mechanical Restraint by Unit	13	11
Hours of Mechanical Restraint Use: 12 Months	14	11
Number of Mechanical Restraint Events: 12 Months	15	11
Hours of Physical Restraint Use by Unit	16	12
Hours of Physical Restraint Use: 12 Months	17	12
Number of Physical Restraint Events: 12 Months	18	12
24-Month Trend of Restraint and Seclusion Hours		13
Patient-to-Patient Assaults by Unit	19	14
13-Month Rate of Patient-to-Patient Assault Events with Injury per 1,000 Days-of-Care	20	14
Patient-to-Staff Assaults by Unit	21	15
13-Month Rate of Patient-to-Staff Assaults with Injury to Staff per 1,000 Days-of-Care	22	15
Risk Adjusted Table of Selected Safety Indicators	23	16
Wellness Indicators		
Tobacco Users	24	17
Reasons for Hospitalization as a Result of an Incident	25	17
Medication Use Indicators		
Benzodiazepines	26	18
Multiple Atypicals	27	18
Typical-Atypical	28	18
STAT Medication Usage		
Civil	29	19
Forensic	30	20
ACT 21 (SRTP)	31	20

During April 2018, a total of 1045 incident reports were completed by the state hospital system. Additional records addressing specific categories from the previous month were included on page 4 of this report. The following is a breakdown of incidents by individual facility and type of care:

Table 1 - Number of Incident Reports

	Census 04/30/2018	Days Provided	Incidents	Per 1000 Days-of-Care
Clarks Summit	174	5229	94	18.0
Danville	159	4750	129	27.2
Norristown	102	3072	75	24.4
Torrance	161	4751	143	30.1
Warren	144	4415	208	47.1
Wernersville	258	7714	177	22.9
Total Civil	998	29931	826	27.6
Forensic				
Norristown	184	5521	106	19.2
Torrance	95	2936	47	16.0
Total Forensic	279	8457	153	18.1
Act 21				
Act 21	59	1556	7	4.5
Total Act 21	59	1556	7	4.5
Long Term Care				
South Mountain	142	4236	59	13.9
Total L. T. C.	142	4236	59	13.9
Total	1478	44180	1045	23.7

Thirteen-Month Trend of Incidents by Type of Care per 1,000 Days of Care



*Note: Rules regarding the reporting of incidents involving patient-to-patient assaults require a separate incident report form on each person involved in an altercation. This includes both the aggressor, when known and any other person involved. The numbers reported above reflect the monthly, total number of SI-815 reports coded as Patient-to-Patient Assaults and not the actual number of altercations.

The following table is refreshed each month from the most recent data (recent 6 month period) available from the State Hospital System RM database.

CATEGORY	Count	Nov_17	Dec_17	Jan_18	Feb_18	Mar_18	Apr_18
Accident-Injury	202	37	28	33	28	36	40
Adverse Drug Reaction	22	1	2	3	6	3	7
Aggression	812	124	126	122	137	182	121
Airway Obstruction type 1 Intervention	26	6	4	8	1	6	1
Airway Obstruction type 2 No Intervention	5	1	2		1		1
Alcohol Use/Possession/Suspected or Confirmed	2	1					1
Alleged Nonconsensual Sexual Activity	9	2		1	4		2
Alleged Pt. Abuse	33	3	7	4	5	10	4
Alleged Suspected Criminal Act	1		1				
Assault, Pt./Pt	1375	264	195	226	207	209	274
Assault, Pt./Staff	444	75	61	91	54	96	67
Assault: Patient/Other	2	2					
AWOL/UA	22	5		3	4	2	8
AWOL-Attempt	44	5	3	5	5	16	10
AWOL-Late	22	4	2	3	4	1	8
Change in Medical Status-Stabilized	32	11	1	8	4	4	4
Change in Medical Status-Transferred	292	57	36	56	45	49	49
Charged post admit/crime committed prior to admit	10	1	3	2	2	2	
Communications Sys. Misuse	20	3	5	5	1	6	
Community Incident	9	1		2		4	2
Contraband Possession	75	15	12	12	10	12	14
Fall Type 1-Injury with treatment	251	52	42	35	35	46	41
Fall Type 2-No treatment needed	686	111	112	112	100	117	134
Family Concern	9	1	3	1		2	2
Illicit Substance Use/Possession	5	2	1	1			1
Indeterminate/Unconfirmed Cause of Injury	76	13	12	14	10	8	19
Medication Error	97	15	13	17	14	27	11
Missing Property	16	2	5	3	2	3	1
Other	362	54	65	63	58	58	64
Procedural Treatment Error	15	3	3		2	3	4
Property Damage	69	13	7	17	10	17	5
Seizure	40	10	5	4	7	6	8
Self-Injurious behavior	583	81	72	109	88	122	111
Sexual Behavior	69	7	14	14	12	5	17
Smoking Violation	32	6	8	8	5	3	2
Substantiated Nonconsensual Sexual Activity	1			1			
Substantiated Patient Abuse	10	2		1	1	5	1
Sudden Acute Illness	1	1					
Suicide Attempt	10	1			3	6	
Suicide threat/plan	22	5	3	1	8	3	2
Theft	18	2	1	3	2	7	3
Unknown	3	1					2
Unsubstantiated Nonconsensual Sexual Activity	12	1		8	3		
Unsubstantiated Patient Abuse	79	1	25	27	10	12	4

Table 2 - Category or Cause of Incidents in the Civil Hospitals

Primary Cat #	CLA	DAN	NOR	TOR	WAR	WER	Count
Accident-Injury	3	2	4	2	2	8	21
Adverse Drug Reaction	0	4	0	0	0	0	4
Aggression	20	9	5	14	25	20	93
Alcohol Use/Possession/Suspected or Confirmed	0	0	0	0	1	0	1
Alleged Nonconsensual Sexual Activity	0	0	0	0	2	0	2
Alleged Pt. Abuse	2	0	0	0	0	1	3
Assault, Pt./Pt	14	32	36	19	79	19	199
Assault, Pt./Staff	5	16	5	7	18	6	57
AWOL/UA	1	1	0	2	3	1	8
AWOL-Attempt	0	3	0	4	1	1	9
AWOL-Late	0	1	0	1	1	5	8
Change in Medical Status-Stabilized	0	0	0	1	1	2	4
Change in Medical Status-Transferred	4	2	5	3	7	16	37
Community Incident	2	0	0	0	0	0	2
Contraband Possession	0	4	0	3	4	3	14
Fall Type 1-Injury with treatment	9	3	3	2	7	12	36
Fall Type 2-No treatment needed	8	19	5	22	20	38	112
Family Concern	2	0	0	0	0	0	2
Illicit Substance Use/Possession	0	0	0	0	0	1	1
Indeterminate/Unconfirmed Cause of Injury	3	1	1	7	0	2	14
Medication Error	0	4	1	0	0	2	7
Missing Property	1	0	0	0	0	0	1
Other	2	12	3	18	4	11	50
Procedural Treatment Error	3	0	0	0	1	0	4
Property Damage	0	2	0	2	0	0	4
Seizure	0	0	1	0	2	3	6
Self-Injurious behavior	15	14	4	28	20	19	100
Sexual Behavior	0	0	0	7	4	4	15
Smoking Violation	0	0	2	0	0	0	2
Substantiated Patient Abuse	0	0	0	0	0	1	1
Suicide threat/plan	0	0	0	0	2	0	2
Theft	0	0	0	1	1	1	3
Unsubstantiated Patient Abuse	0	0	0	0	3	1	4
Totals	94	129	75	143	208	177	826

Table 3 - Primary Effect of Incidents in the Civil Hospitals

Primary effect	CLA	DAN	NOR	TOR	WAR	WER	Count
Abrasion/scrape/scratch/hematoma	8	7	7	15	13	14	64
Asphyxiation	0	0	0	0	0	1	1
Bite-Human	0	0	1	0	0	0	1
Body System Illness	0	3	0	2	0	1	6
Bruise/contusion/discoloration	5	1	7	8	5	1	27
Burn/Scald	0	1	0	0	0	0	1
Constipation	0	0	0	1	0	0	1
Death	0	0	0	0	0	1	1
Dislocation	0	0	0	0	0	1	1
Edema/swelling	1	0	0	1	3	5	10
Emesis	0	0	1	0	0	1	2
Epistaxis	0	0	1	0	0	1	2
Erythema/redness	2	1	0	5	7	5	20
Fever	0	0	0	0	0	3	3
Fracture	0	1	0	1	0	0	2
Ingestion of foreign body	2	4	0	1	0	4	11
Laceration: NO sutures/staples/steri-strips	1	0	3	5	0	3	12
Laceration: with steristrips/glue	1	1	0	0	0	0	2
Laceration: with sutures/staples	0	0	0	1	0	0	1
Lethargy	0	0	1	0	2	3	6
No Injury/NA	65	95	44	92	165	107	568
Other	0	10	6	6	1	4	27
Pain unspecified	1	0	3	0	0	1	5
Pain, Specified	6	2	0	2	9	13	32
Respiratory Distress	1	0	0	0	1	1	3
Seizure	0	0	1	0	1	4	6
Skin Irritation/Rash	0	2	0	1	0	1	4
Sunburn	0	0	0	1	1	0	2
Syncopal episode	1	0	0	1	0	1	3
Unconscious/Unresponsive	0	1	0	0	0	1	2
Totals	94	129	75	143	208	177	826

Table 4 - Cause of Incidents in the Forensic Units Category or Cause of Incidents in the Forensic Service by Unit

Primary Cat #	NSH							TSH					Sys	
	51A1	51A2	51B2	51C1	51C2	10D1	10E1	Total	FB3	FB4	FC1	FC2	Total	Count
Accident-Injury				1				1				1	1	2
Adverse Drug Reaction	3							3					0	3
Aggression		1	5		4	3		13	1	1	1	2	5	18
Airway Obstruction type 2 No Intervention						1		1					0	1
Alleged Pt. Abuse			1					1					0	1
Assault, Pt./Pt	8		6	21	16	4	2	57	2	3	3	10	18	75
Assault, Pt./Staff		3	2		1	1	1	8		1			1	9
Change in Medical Status-Transferred						1	2	3	1	1	1		3	6
Fall Type 1-Injury with treatment							1	1	2				2	3
Fall Type 2-No treatment needed					1		4	5	3	2		1	6	11
Medication Error					1			1					0	1
Other		4		2	1			7	1	1		1	3	10
Seizure					2			2					0	2
Self-Injurious behavior				1				1		3	1	4	8	9
Sexual Behavior		1		1				2					0	2
Totals	11	9	14	26	26	10	10	106	10	12	6	19	47	153

Table 5 - Effect of Incidents in the Forensic Service by Unit

EFFECT	NSH							TSH					Sys	
	51A1	51A2	51B2	51C1	51C2	10D1	10E1	Total	FB3	FB4	FC1	FC2	Total	Count
Abrasion/scrape/scratch/hematoma	3		1	2	8		2	16	1		2	6	9	25
Bruise/contusion/discoloration								0		1		4	5	5
Damaged or lost tooth				1				1					0	1
Edema/swelling							1	1		3	1		4	5
Epistaxis								0				1	1	1
Erythema/redness				1				1	1	2	1	1	5	6
Fracture				1				1					0	1
Laceration: NO sutures/staples/steri-strips				1	1			2	1				1	3
Laceration: with sutures/staples	1							1					0	1
No Injury/NA	3	9	13	19	14	9	5	72	3	5	2	5	15	87
Other	3				1		1	5	2				2	7
Pain unspecified								0	1				1	1
Pain, Specified	1					1		2	1	1		2	4	6
Seizure					2			2					0	2
Unconscious/Unresponsive				1			1	2					0	2
Totals	11	9	14	26	26	10	10	106	10	12	6	19	47	153

Table 6 -Cause of Incidents in the Long Term Care Facility

Cause	3A	3B	5A	6A	6B	Count
Accident-Injury	3	5	2	4	2	16
Aggression		6		2		8
Airway Obstruction type 1 Intervention			1			1
AWOL-Attempt		1				1
Change in Medical Status-Transferred	1	1	2		1	5
Fall Type 1-Injury with treatment	1		1			2
Fall Type 2-No treatment needed	6	2	3			11
Indeterminate/Unconfirmed Cause of Injury		1			4	5
Medication Error		1	1	1		3
Other	2				1	3
Self-Injurious behavior	1				1	2
Unknown				1	1	2
Totals	14	17	10	8	10	59

Table 7 - Effect of Incidents in the Long Term Care Facility

Cause	3A	3B	5A	6A	6B	Count
Accident-Injury	3	5	2	4	2	16
Aggression		6		2		8
Airway Obstruction type 1 Intervention			1			1
AWOL-Attempt		1				1
Change in Medical Status-Transferred	1	1	2		1	5
Fall Type 1-Injury with treatment	1		1			2
Fall Type 2-No treatment needed	6	2	3			11
Indeterminate/Unconfirmed Cause of Injury		1			4	5
Medication Error		1	1	1		3
Other	2				1	3
Self-Injurious behavior	1				1	2
Unknown				1	1	2
Totals	14	17	10	8	10	59

Act-21-Sexual Responsibility & Treatment Program at Torrance State Hospital

In July 2003, the Pennsylvania Legislature enacted Act 21 for adjudicated youth, aging out of the juvenile justice system who have a "mental abnormality" that renders them unable to control their violent sexual impulses. The Act mandates the state to provide mental health and sex-offense specific treatment to an identified population that had been adjudicated of certain sex crimes, received treatment in a juvenile program, yet remains a significant risk to sexually re-offend after reaching the age of 21, an age when oversight by the juvenile justice system typically ends. The Act requires the referral of such individuals who have committed these specific crimes to the Pennsylvania Sexual Offenders Assessment Board (SOAB) ninety days prior to their 20th birthday for purposes of determining if the individual has "serious difficulty in controlling sexually violent behavior." If so determined, a petition for a mental health hearing will be made for determination of civil commitment to the Sexual Responsibility and Treatment Program (SRTP) on the grounds of Torrance State Hospital. On July 1, 2006, the operation of this program transferred from an independent contractor to the Torrance State Hospital.

Table 8 - Cause of Incidents in the Sexual Responsibility and Treatment Program

Cause	TOR	Count
Accident-Injury	1	1
Aggression	2	2
Assault, Pt./Staff	1	1
Change in Medical Status-Transferred	1	1
Other	1	1
Property Damage	1	1
Totals	7	7

Table 9 - Effect of Incidents in the Sexual Responsibility and Treatment Program

Primary effect	TOR	Count
Abrasion/scrape/scratch/hematoma	1	1
Ingestion of foreign body	1	1
Muscle pull/strain/sprain	1	1
No Injury/NA	3	3
Pain unspecified	1	1
Totals	7	7

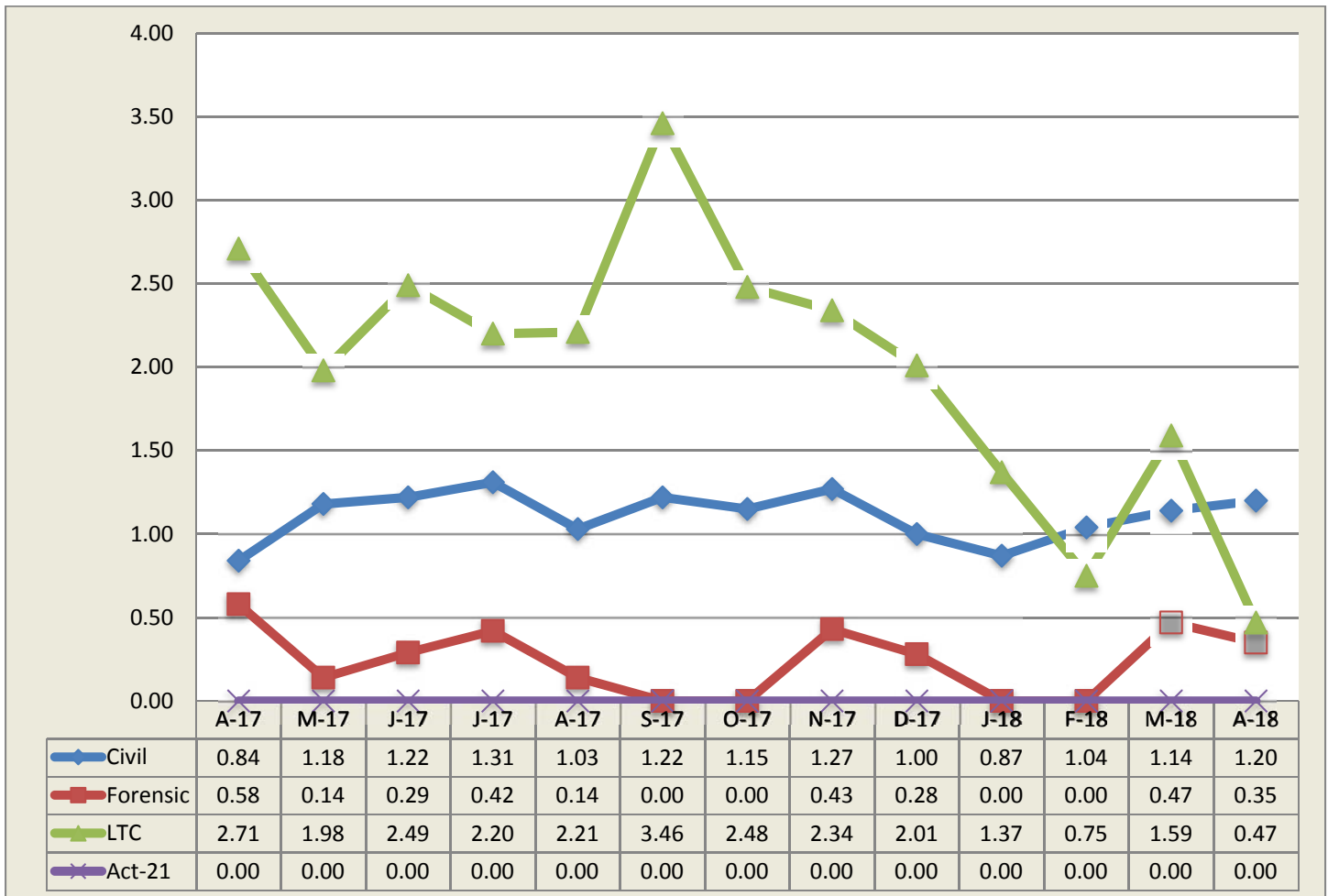
Falls

Falls within the state hospital risk management system are divided into two categories, type 1 and type 2, with the need for medical intervention or lack thereof defining the difference. The following data relates to falls, type 1 which are defined as an involuntary descent to a lower position, excluding seizures, that is witnessed or reported and requires medical intervention.

Table 10 - 13-Month Rate of Type 1 Falls Per 1,000 Days-of-Care

M/Year	Civil Hospital							Forensic			A21	LTC	Sys Avg
	Cla	Dan	Nor	Tor	War	Wer	Ttl	Nor	Tor	Total	A21	SMRC	
Apr-17	1.27	0.21	0.82	0.20	1.13	1.16	0.84	1.01	0.00	0.58	0.00	2.71	0.96
May-17	1.42	0.81	1.59	0.20	1.08	1.74	1.18	0.25	0.00	0.14	0.00	1.98	1.06
Jun-17	0.93	1.66	2.16	0.42	1.33	1.15	1.22	0.25	0.34	0.29	0.00	2.49	1.16
Jul-17	1.61	1.21	1.06	0.59	1.71	1.49	1.31	0.72	0.00	0.42	0.00	2.20	1.21
Aug-17	1.78	0.20	0.26	0.58	1.54	1.36	1.03	0.00	0.33	0.14	0.00	2.21	0.97
Sep-17	1.10	1.05	1.64	0.82	0.89	1.66	1.22	0.00	0.00	0.00	0.00	3.46	1.21
Oct-17	1.60	1.21	0.79	0.40	1.08	1.48	1.15	0.00	0.00	0.00	0.00	2.48	1.06
Nov-17	1.49	0.42	1.12	0.42	1.34	2.19	1.27	0.75	0.00	0.43	0.00	2.34	1.20
Dec-17	0.91	0.63	0.30	0.41	1.31	1.74	1.00	0.48	0.00	0.28	0.00	2.01	0.95
Jan-18	1.10	0.20	0.93	0.63	0.65	1.36	0.87	0.00	0.00	0.00	0.00	1.37	0.75
Feb-18	1.62	0.68	0.35	0.00	1.59	1.40	1.04	0.64	0.00	0.00	0.00	0.75	0.86
Mar-18	1.47	0.81	1.27	0.43	0.87	1.64	1.14	0.54	0.33	0.47	0.00	1.59	1.01
Apr-18	1.72	0.63	0.98	0.42	1.59	1.56	1.20	0.18	0.68	0.35	0.00	0.47	0.93

13-Month Trend of Type 1 Falls by Type of Care per 1,000 Days-of-Care



State Hospital Use of Seclusion

Civil and Forensic

Data on seclusion use for psychiatric reasons includes the civil and forensic populations and is reported for both monthly and yearly totals.

Table 11 - Hours of Seclusion Use, Monthly Totals for Past Year

No Use of Seclusion in PA State Hospital system since July 2013

Table 12 - Number of Seclusion Events, Monthly Totals for Past Year

No Use of Seclusion in PA State Hospital system since July 2013

State Hospital Use of Mechanical Restraint

Civil and Forensic

Data on mechanical restraint use for psychiatric reasons includes the forensic and civil populations and is reported for both monthly and yearly totals.

Table 13 - Total Hours of Mechanical Restraint Use by Hospital and Unit In Month

No use of Mechanical Restraint in PA State Hospital system since September 2015

Table 14 - Hours of Mechanical Restraint Use, Monthly Totals for Past Year

No use of Mechanical Restraint in PA State Hospital system since September 2015

Table 15 - Number of Mechanical Restraint Events, Monthly Totals for Past Year

No use of Mechanical Restraint in PA State Hospital system since September 2015

State Hospital Use of Physical Holds

Data on physical holds use for psychiatric reasons includes all level of care populations and is reported for both monthly and yearly totals. Physical hold events lasting less than 60 seconds are reflected as 0.00 hours.

Table 16 - Hours of Physical Holds (Restraint) Used by Hospital & Unit

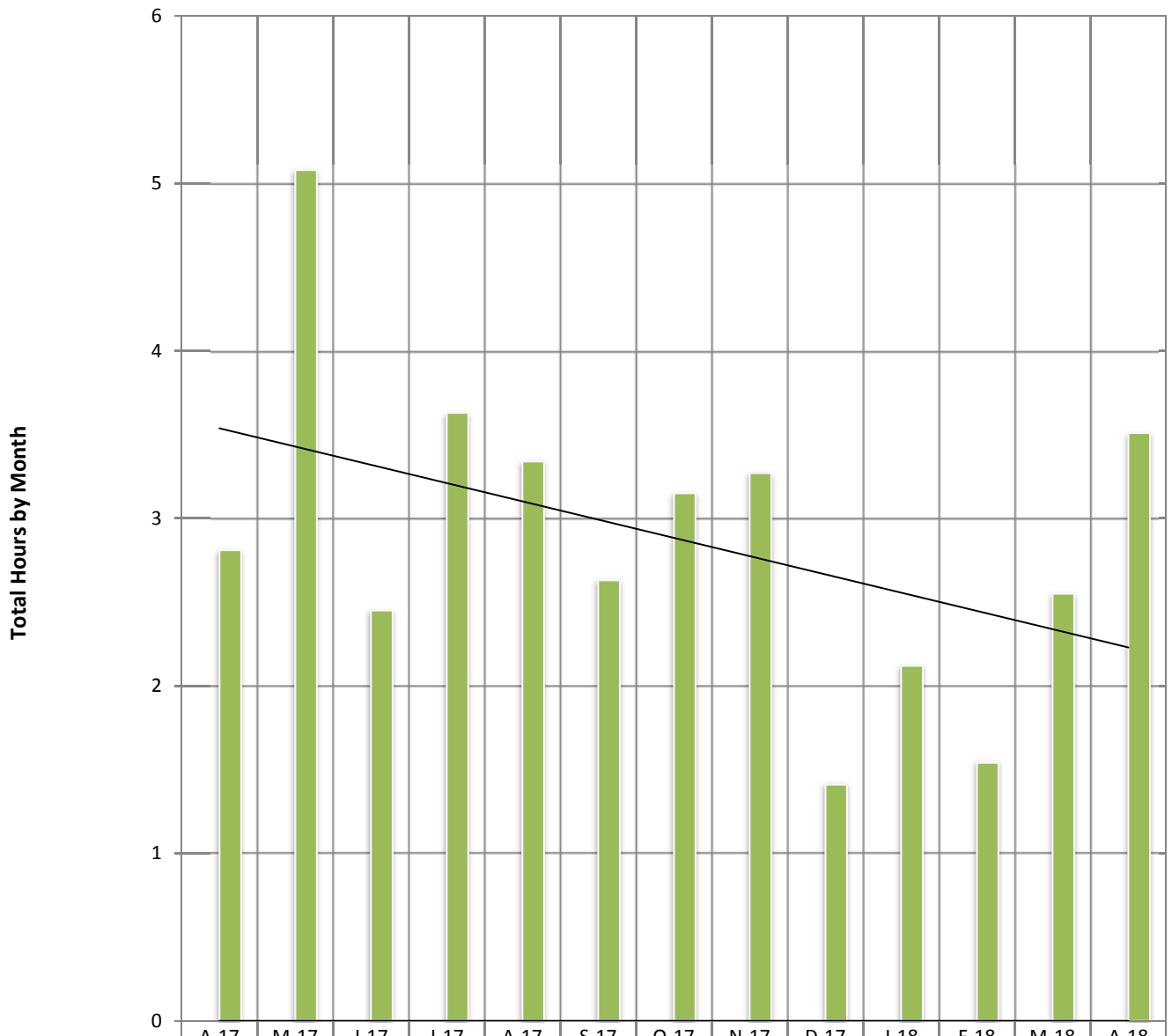
ABV	WARD	Total	ABV	WARD	Total	ABV	WARD	Total
TOR	FB4	0.68	NOR	51A2	0.12	NOR	51A1	0.02
TOR	064	0.58	NOR	10D1	0.10	DAN	311	0.01
CLA	3	0.36	NOR	10A2	0.06	DAN	211	0.01
DAN	312	0.19	TOR	FC1	0.05	NOR	51C1	0.01
TOR	013	0.18	WER	34-4	0.05	NOR	01A1	0.003
CLA	6	0.16	TOR	021	0.03	NOR	51B2	0.003
TOR	FB3	0.15	NOR	51C2	0.03	NOR	01C2	0.0003
TOR	061	0.13						

Table 17 - Hours of Physical Holds (Restraint) Use, Monthly Totals for Past Year

ABV	Total	May_17	Jun_17	Jul_17	Aug_17	Sep_17	Oct_17	Nov_17	Dec_17	Jan_18	Feb_18	Mar_18	Apr_18
CLA	12.54	1.20	0.61	0.71	1.14	1.43	0.28	1.25	1.48	1.49	0.98	0.68	1.30
DAN	5.53	0.31	0.10	3.48	0.05	0.13	0.30	0.11	0.01	0.21	0.13	0.11	0.59
NOR	4.31	0.76	0.29	0.52	0.35	0.39	0.37	0.32	0.17	0.11	0.27	0.40	0.35
TOR	23.88	1.43	1.83	2.22	2.08	1.62	2.98	2.90	0.43	1.90	0.57	2.77	3.15
WAR	3.51	2.12	0.39	0.15	0.73	0.13	0.00	0.00	0.00	0.00	0.00	0.00	0.00
WER	2.91	0.34	0.54	0.27	0.62	0.10	0.07	0.05	0.21	0.04	0.48	0.03	0.16
Total	52.69	6.17	3.76	7.35	4.98	3.80	4.02	4.63	2.30	3.75	2.42	3.98	5.55

Table 18 - Number of Physical Holds (Restraint) Events, Monthly Totals for Past Year

ABV	Total	May_17	Jun_17	Jul_17	Aug_17	Sep_17	Oct_17	Nov_17	Dec_17	Jan_18	Feb_18	Mar_18	Apr_18
CLA	141	16	9	11	17	11	5	13	23	7	9	8	12
DAN	61	11	3	8	2	4	5	8	2	3	2	4	9
NOR	273	33	32	19	24	24	28	24	13	17	14	21	24
TOR	128	5	6	12	10	12	15	17	5	14	5	17	10
WAR	26	10	4	5	6	1	0	0	0	0	0	0	0
WER	74	10	13	9	12	4	4	3	5	2	7	2	3
Total	703	85	67	64	71	56	57	65	48	43	37	52	58



■ Mechanical Restraint	0.00	0.00	0.00	0.00	0.00	0.00	0.00	0.00	0.00	0.00	0.00	0.00	
■ Physical Restraint	2.81	5.08	2.45	3.63	3.34	2.63	3.15	3.27	1.41	2.12	1.54	2.55	3.51

■ Mechanical Restraint
 ■ Physical Restraint
 — Linear (Mechanical Restraint)
 — Linear (Physical Restraint)

Assaults

Assaults within the state hospital system are defined as any aggressive act by a patient, involving physical contact that may or may not result in injury. Assaults can be directed at a peer, staff or any other individual. The system was designed to require an incident report (form SI-815) on any patient involved in a physical altercation regardless of who may have started the assault. Therefore, every patient-to-patient altercation will result in at least two incident reports.

Table 19 - Patient-to-Patient Assaults by Unit, All Levels of Care

ABV	WARD	Cnt	ABV	WARD	Cnt	ABV	WARD	Cnt
WAR	3SW	63	TOR	021	7	TOR	FB4	3
NOR	51C1	21	NOR	51B2	6	WER	37-2	2
NOR	51C2	16	WAR	3IM	6	WER	37-1	2
DAN	312	12	NOR	01A1	6	NOR	10E1	2
NOR	10C2	12	CLA	7	5	TOR	FB3	2
NOR	01C2	10	WER	35-4	5	CLA	3	2
TOR	FC2	10	NOR	10D1	4	DAN	211	2
DAN	212	8	TOR	013	4	WER	34-3	2
DAN	311	8	WER	35-2	4	DAN	310	2
NOR	51A1	8	TOR	012	4	WAR	3NM	1
NOR	10A2	8	WER	34-4	4	WAR	2NM	1
CLA	6	7	TOR	FC1	3	TOR	024	1
WAR	IBE	7	TOR	022	3	WAR	3IF	1

Table 20 - Rate of Patient-to-Patient Assaults Events with Patient Injury per 1,000 Days-of-Care

Pt.-to-Pt. Assault w/ any Injury	Civil							Forensic			S RTP
	Cla	Dan	Nor	Tor	War	Wer	Tot.	Nor	Tor	Tot.	S RTP
Apr-17	1.09	0.42	1.91	1.20	0.68	0.90	1.00	2.52	1.68	2.16	0.00
May-17	0.89	1.63	2.39	1.99	1.29	0.87	1.40	3.46	0.66	2.27	0.00
Jun-17	0.56	2.29	0.81	1.67	0.89	0.90	1.16	3.75	0.68	2.45	0.00
Jul-17	0.36	0.60	2.38	2.37	0.85	0.50	1.06	4.59	0.00	2.65	0.00
Aug-17	1.96	0.20	1.59	1.95	0.44	0.74	1.12	5.08	1.00	3.36	0.00
Sep-17	1.65	0.00	2.19	1.63	1.56	0.51	1.16	3.51	0.00	2.01	0.00
Oct-17	0.53	0.40	3.18	2.01	0.86	0.25	1.03	3.37	0.33	2.09	0.00
Nov-17	0.19	0.63	4.21	2.09	0.89	0.77	1.27	0.75	0.00	0.43	0.00
Dec-17	0.36	0.00	2.43	2.07	0.44	0.62	0.87	4.06	0.98	2.76	0.66
Jan-18	1.28	0.61	5.27	0.85	1.09	0.62	1.32	2.86	0.66	1.94	1.25
Feb-18	1.22	0.23	4.87	2.90	2.04	0.84	1.72	1.72	2.19	1.89	0.00
Mar-18	0.73	1.22	4.43	1.72	0.43	0.75	1.30	3.05	1.65	2.56	0.00
Apr-18	0.57	1.05	3.26	0.42	2.94	0.52	1.24	3.62	4.77	4.02	0.00

Table 21 - Patient-to-Staff Assault Events by Unit, All Levels of Care

ABV	WARD	Cnt		ABV	WARD	Cnt		ABV	WARD	Cnt
WAR	3SW	13		DAN	211	2		TOR	064	1
DAN	312	6		NOR	51B2	2		TOR	013	1
DAN	212	4		WER	35-3	2		NOR	10C2	1
WAR	IBE	4		NOR	01C2	1		NOR	10D1	1
TOR	021	4		WER	35-2	1		NOR	10E1	1
NOR	51A2	3		WER	34-4	1		CLA	3	1
DAN	310	3		WER	34-3	1		TOR	022	1
NOR	01A1	3		WAR	2NM	1		WER	37-1	1
CLA	5	2		DAN	311	1		TOR	012	1
CLA	6	2		NOR	51C2	1		TOR	FB4	1

Table 22 - Rate of Patient-to-Staff Assault Events with Injury to Staff per 1,000 Days-of-Care

Pt/Staff Assault w/ Staff Inj per 1K days	Civil							Forensic			S RTP
	Cl	Dan	Nor	Tor	War	Wer	Tot.	Nor	Tor	Tot.	S RTP
Apr-17	0.00	0.21	0.27	0.40	2.95	0.64	0.71	0.25	0.34	0.29	0.68
May-17	0.18	1.02	0.27	0.00	1.51	1.24	0.75	0.74	0.00	0.42	0.00
Jun-17	0.37	0.21	0.27	0.00	2.00	0.64	0.58	0.25	0.34	0.29	0.00
Jul-17	0.00	0.80	1.32	0.59	1.49	0.25	0.65	0.24	0.00	0.14	0.00
Aug-17	0.00	0.00	0.79	0.00	2.86	0.87	0.72	0.73	0.67	0.70	0.00
Sep-17	0.18	0.21	0.82	0.00	1.79	0.25	0.48	0.25	0.67	0.43	0.69
Oct-17	0.18	0.80	0.00	0.40	0.86	0.62	0.50	1.21	1.00	1.12	0.00
Nov-17	0.19	0.63	0.56	0.63	1.57	0.62	0.59	0.25	0.34	0.29	0.00
Dec-17	0.73	0.21	0.30	0.41	0.65	0.50	0.48	0.00	0.00	0.00	0.00
Jan-18	0.92	0.00	0.31	1.06	2.83	0.25	0.84	1.43	0.66	1.11	0.00
Feb-18	0.00	0.00	0.35	0.00	0.45	0.42	0.21	0.64	0.00	0.41	0.00
Mar-18	0.18	0.20	0.00	0.21	0.87	1.01	0.49	0.36	0.66	0.47	0.00
Apr-18	0.57	0.42	0.98	0.42	1.36	0.52	0.67	0.91	0.34	0.71	0.64

Table 23 - Risk Adjusted Safety Indicators

Apr-18	Civil							Forensic					
Month	Cl	Dan	Nor	Tor	War	Wer	C. Total	Nor	Tor	F. Total	LTC	SRTP	System
Patient Days	5229	4750	3072	4751	4415	7714	29931	5521	2936	8457	4236	1556	44180
Census	174	159	102	161	144	258	998	184	95	279	142	59	1478
Safety Indicators													
Type 1 Falls (count)	9	3	3	2	7	12	36	1	2	3	2	0	41
Num Per 1,000 Pt Days	1.72	0.63	0.98	0.42	1.59	1.56	1.20	0.18	0.68	0.35	0.47	0.00	0.93
Total Falls (count)	17	22	8	24	27	50	148	6	8	14	13	0	175
Num Per 1,000 Pt Days	3.25	4.63	2.60	5.05	6.12	6.48	4.94	1.09	2.72	1.66	3.07	0.00	3.96
PT:PT Assaults w/Injury(count)	3	5	10	2	13	4	37	20	14	34	0	0	71
Num Per 1,000 Pt Days	0.57	1.05	3.26	0.42	2.94	0.52	1.24	3.62	4.77	4.02	0.00	0.00	1.61
Total PT:PT Assault Events (count)	14	32	36	19	79	19	199	57	18	75	0	0	274
Num Per 1,000 Pt Days	2.68	6.74	11.72	4.00	#####	2.46	6.65	10.32	6.13	8.87	0.00	0.00	6.20
PT:Staff Assaults w/Injury(count)	3	2	3	2	6	4	20	5	1	6	0	1	27
Num Per 1,000 Pt Days	0.57	0.42	0.98	0.42	1.36	0.52	0.67	0.91	0.34	0.71	0.00	0.64	0.61
Total PT:Staff Assault Events (count)	5	16	5	7	18	6	57	8	1	9	0	1	67
Num Per 1,000 Pt Days	0.96	3.37	1.63	1.47	4.08	0.78	1.90	1.45	0.34	1.06	0.00	0.64	1.52
SIB Events (count)	15	14	4	28	20	19	100	1	8	9	2	0	111
Num Per 1,000 Pt Days	2.87	2.95	1.30	5.89	4.53	2.46	3.34	0.18	2.72	1.06	0.47	0.00	2.51
Total Physical Restraint Hours	0.52	0.21	0.07	0.22	0	0.05	1.07	0.28	0.88	1.16		1.28	3.51
Num Per 1,000 Pt Days	0.10	0.04	0.02	0.05	0.00	0.01	0.04	0.05	0.30	0.14		0.82	0.08
Medication Measures													
Benzodiazepines	92	72	53	65	88	81	451	16	13	29		12	492
Percentage of Census	0.53	0.45	0.52	0.40	0.61	0.31	0.45	0.09	0.14	0.10		0.20	0.33
Multiple Atypicals	24	39	5	46	43	54	211	7	6	13		0	224
Percentage of Census	0.14	0.25	0.05	0.29	0.30	0.21	0.21	0.04	0.06	0.05		0.00	0.15
Typical- Atypical	31	62	52	65	31	126	367	61	31	92		0	459
Percentage of Census	0.18	0.39	0.51	0.40	0.22	0.49	0.37	0.33	0.33	0.33		0.00	0.31

Wellness Indicators

The National Association of State Mental Health Program Directors (NASMHPD) issued a report in October 2006 about mortality and morbidity in people with serious mental illness (SMI). According to Mental Health America's *Survey of People with Schizophrenia and Providers* (www.mentalhealthamerica.net), the NASMHPD report revealed that people with SMI die on average 25 years earlier than the general population. The major natural causes of death for people with SMI are heart disease, diabetes, respiratory disease and infectious disease. Many of the risk factors for these diseases are modifiable. Beginning June 2008, the state began compiling and comparing data on the number of tobacco users (Table 24) in our state hospitals.

Table 24 - Tobacco Users on Last Day of Month Civil and Long Term Care

Month	Tobacco Users	CLA	DAN	NOR	TOR	WAR	WER	Civil Total	LTC	System Total
May-17	Total Users	102	56	60	60	84	70	432	11	443
	% of Census	56%	35%	51%	43%	56%	26%	42%	7%	31%
Oct-17	Total Users	100	55	52	57	87	84	435	13	448
	% of Census	55%	35%	43%	47%	58%	32%	42%	9%	31%
Jan-18	Total Users	100	51	14	58	77	82	382	12	394
	% of Census	57%	32%	14%	37%	52%	32%	38%	9%	27%
Apr-18	Total Users	93	49	24	28	89	76	359	11	370
	% of Census	53%	31%	24%	17%	62%	29%	36%	8%	25%

Table 25 - Reasons for Hospitalizations as the Result of an Incident, All Levels of Care

The Risk Management System requires that an incident report form be completed anytime a person is transported from a state hospital to an acute care hospital. This includes if the person was only seen in the emergency room, received diagnostic tests and/or was actually admitted. It does **not** include hospitalizations for a preplanned procedure, test or surgery.

Cause	CLA	DAN	NOR	TOR	WAR	Count
Assault, Pt./Pt	1	1	3			5
AWOL/UA	1					1
Change in Medical Status-Transferred	4	2	8	5	7	26
Fall Type 1-Injury with treatment	1	1		1		3
Fall Type 2-No treatment needed				1	1	2
Family Concern	1					1
Other		3				3
Seizure			2			2
Self-Injurious behavior	1	1				2
Totals	9	8	13	7	8	45

Medication Measures

Beginning in September 2008 the OMHSAS Bureau of Community and Hospital Operations identified the following three medication measures for inclusion in this monthly report. The table information is compiled from the QS1 pharmacy software and reflects the unique count of the number of people served at each hospital on the last day of the month for each measure.

Table 26 - Benzodiazepines

Measure Definition: *Benzodiazepines refers to the number of unique patients served at each hospital, by level-of-care, who have an active, straight order for any benzodiazepine medication on the last day of each month.*

BZD								Forensic			SRTP	Sys
M/Y	Cl	Dan	Nor	Tor	War	Wer	Total	Nor	Tor	Cnt	Tor	Total
Jun-17	89	70	66	61	76	90	452	26	6	32	11	495
Sep-17	90	74	68	65	79	89	465	26	7	33	11	509
Dec-17	86	73	55	57	78	86	435	21	8	29	12	476
Apr-18	92	72	53	65	88	81	451	16	13	29	12	476

Table 27 - Multiple Atypicals

Measure Definition: *Multiple Atypicals refers to the number of unique patients served at each hospital, by level-of-care, who have an active, straight order for two or more atypical antipsychotic medications on the last day of each month.*

Multiple Atypicals								Forensic			SRTP	Sys
M/Y	Cl	Dan	Nor	Tor	War	Wer	Total	Nor	Tor	Cnt	Tor	Total
Jun-17	23	43	4	55	38	60	223	2	10	12	0	235
Sep-17	29	49	8	51	39	54	230	10	7	17	0	247
Dec-17	25	38	7	46	38	53	207	8	9	17	0	224
Apr-18	24	39	5	46	43	54	211	7	6	13	0	224

Table 28 - Typical-Atypical

Measure Definition: *Typical-Atypicals refers to the number of unique patients served at each hospital, by level-of-care, who have an active, straight order for a typical and an atypical antipsychotic medication on the last day of each month.*

Typical - Atypical								Forensic			SRTP	Sys
M/Y	Cl	Dan	Nor	Tor	War	Wer	Total	Nor	Tor	Cnt	Tor	Total
Jun-17	38	61	54	73	37	112	375	29	54	83	0	458
Sep-17	35	63	65	74	35	124	396	34	50	84	0	480
Dec-17	31	54	55	65	31	123	359	40	40	80	0	439
Apr-18	31	62	52	65	31	126	367	61	31	92	0	459

Table 29 - STAT Medication Usage – Civil

Measure Definition: STAT medication are counted as psychiatric medications that have been administered. If two STAT medications are administered, it is counted as one event. Each STAT medication event is documented by “Route of Administration” and “Requested by”. This measure includes all levels of care.

CLARKS SUMMIT (FY 2017-18)							
Month	Total Number of STATs	Route of Admin			Requested by:		
		PO	IM	PEG Tube:	Indv	MD/DO	RN
Apr-18	101	73	28	0	24	59	18

DANVILLE (FY 2017-18)							
Month	Total Number of STATs	Route of Admin			Requested by:		
		PO	IM	Peg Tube:	Indv	MD/DO	RN
Apr-18	105	44	61	0	10	0	95

NORRISTOWN - CIVIL (FY 2017-18)							
Month	Total Number of STATs	Route of Admin			Requested by:		
		PO	IM	Gel:	Indv	MD/DO	RN
Apr-18	34	17	17	0	2	10	22

TORRANCE - CIVIL (FY 2017-18)							
Month	Total Number of STATs	Route of Admin			Requested by:		
		PO	IM	Peg Tube:	Indv	MD/DO	RN
Apr-18	109	45	64	0	21	30	58

WARREN (FY 2017-18)							
Month	Total Number of STATs	Route of Admin			Requested by:		
		PO	IM	Peg Tube:	Indv	MD/DO	RN
Apr-18	165	60	98	7	19	18	128

WERNERSVILLE (FY 2017-18)							
Month	Total Number of STATs	Route of Admin			Requested by:		
		PO	IM	Peg Tube:	Indv	MD/DO	RN
Apr-18	66	53	13	0	23	32	11

Table 30 - STAT Medication Usage – Forensic

NORRISTOWN - FORENSIC (FY 2017-18)								
Month	Total Number of STATs	Route of Admin			Requested by:			
		PO	IM	Peg Tube:	Indv	MD/DO	RN	UNK
Apr-18	127	32	95	0	16	35	74	2

TORRANCE - FORENSIC (FY 2017-18)								
Month	Total Number of STATs	Route of Admin			Requested by:			
		PO	IM	Peg Tube:	Indv	MD/DO	RN	
Apr-18	83	45	38	0	18	30	35	

Table 31 - STAT Medication Usage – ACT 21 (SRTP)

TORRANCE - ACT 21 (FY 2017-18)								
Month	Total Number of STATs	Route of Admin			Requested by:			
		PO	IM	Peg Tube:	Indv	MD/DO	RN	
Apr-18	5	3	2	0	2	0	3	